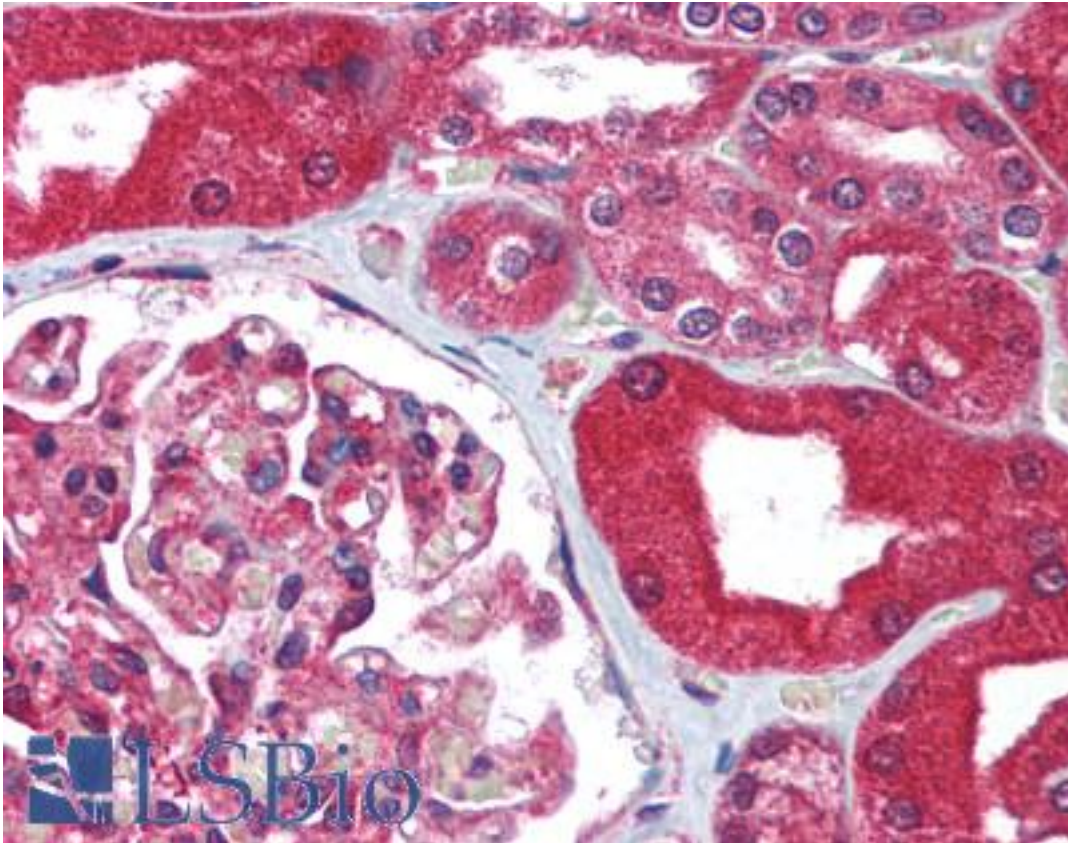


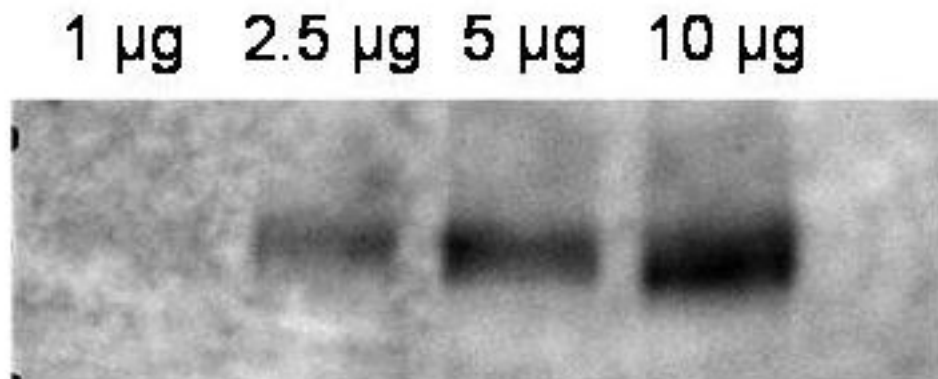
<b>ABCB1 / MDR1 / P Glycoprotein Rabbit anti-Human Polyclonal (aa262-277) Antibody - LS-B1448 - LSBio</b>	
<b>CatalogID:</b>	LS-B1448
<b>Validation:</b>	This antibody replaces catalog number LS-C18849. It has been validated for use in the following assays: IHC.
<b>Target:</b>	ATP-binding cassette, sub-family B (MDR/TAP), member 1 (ABCB1)
<b>Synonyms:</b>	ABCB1 Antibody, ABC20 Antibody, Abcb1b Antibody, CLCS Antibody, Colchicin sensitivity Antibody, CD243 Antibody, Doxorubicin resistance Antibody, IBD13 Antibody, gp170 Antibody, MDR1 Antibody, Multidrug resistance protein 1 Antibody, P glycoprotein Antibody, P-glycoprotein 1 Antibody, P-GP Antibody, CD243 antigen Antibody, PGY1 Antibody
<b>Family / Subfamily:</b>	Transporter / ATP-binding cassette - ABCB/MDR
<b>Host</b>	ABCB1 antibody was produced in Rabbit
<b>Clonality:</b>	Polyclonal
<b>Immunogen Species:</b>	ABCB1 / MDR1 / P Glycoprotein antibody was raised against Human
<b>Antigen Type:</b>	Synthetic peptide
<b>Immunogen:</b>	ABCB1 / MDR1 / P Glycoprotein antibody was raised against synthetic peptide from human ABCB1 / P Glycoprotein.
<b>Specificity:</b>	Amino acids 262-277 of human ABCB1 protein.
<b>Epitope:</b>	aa262-277
<b>Reactivity:</b>	Human, Monkey, Mouse, Rat, Dog
<b>Purification:</b>	Immunoaffinity purified
<b>Presentation:</b>	0.02 M potassium phosphate, 0.15 M sodium chloride, pH 7.2, 0.01% sodium azide.
<b>Recommended Storage:</b>	Long term: -20°C; Short term: +4°C. Avoid repeat freeze-thaw cycles.
<b>Usage Summary:</b>	Tested in Western blot with recombinant proteins only. Immunohistochemistry: LS-B1448 was validated for use in immunohistochemistry on a panel of 21 formalin-fixed, paraffin-embedded (FFPE) human tissues after heat induced antigen retrieval in pH 6.0 citrate buffer. After incubation with the primary antibody, slides were incubated with biotinylated secondary antibody, followed by alkaline phosphatase-streptavidin and chromogen. The stained slides were evaluated by a pathologist to confirm staining specificity. The optimal working concentration for LS-B1448 was determined to be 5 µg/ml.
<b>Uses:</b>	IHC - Paraffin (5 µg/ml), Western blot (1:200 - 1:2000), ELISA (1:10000 - 1:50000) (Optimal dilution to be determined by the researcher)
<b>Size:</b>	50 µg
<b>Concentration:</b>	1 mg/ml

**Immunohistochemistry Image:**



Anti-MDR1 antibody IHC of human kidney. Immunohistochemistry of formalin-fixed, paraffin-embedded tissue after heat-induced antigen retrieval. Antibody LS-B1448 concentration 5 ug/ml.

**Western Blot Image:**



Anti-ABCB1 Antibody - Western Blot. Western blot of affinity purified anti-ABCB1 antibody shows detection of ABCB1 in crude membrane extracts from HF insect cells over-expressing human ABCB1. The extract was loaded onto a gel in the amounts indicated followed by electrophoresis and transfer to nitrocellulose. The membrane was probed with the primary antibody diluted to 1:600, followed by Peroxidase Conjugated Affinity Purified Anti-RABBIT IgG at 1:10000. Personal Communication, Anna Calcagno, CCR-NCI, Bethesda, MD.

**Requested From:**

Japan

Laboratory Reagent For In Vitro Research Use Only

Not for resale without prior written consent from LifeSpan BioSciences, Inc.

Created on 9/23/2014

© 2014 LifeSpan BioSciences