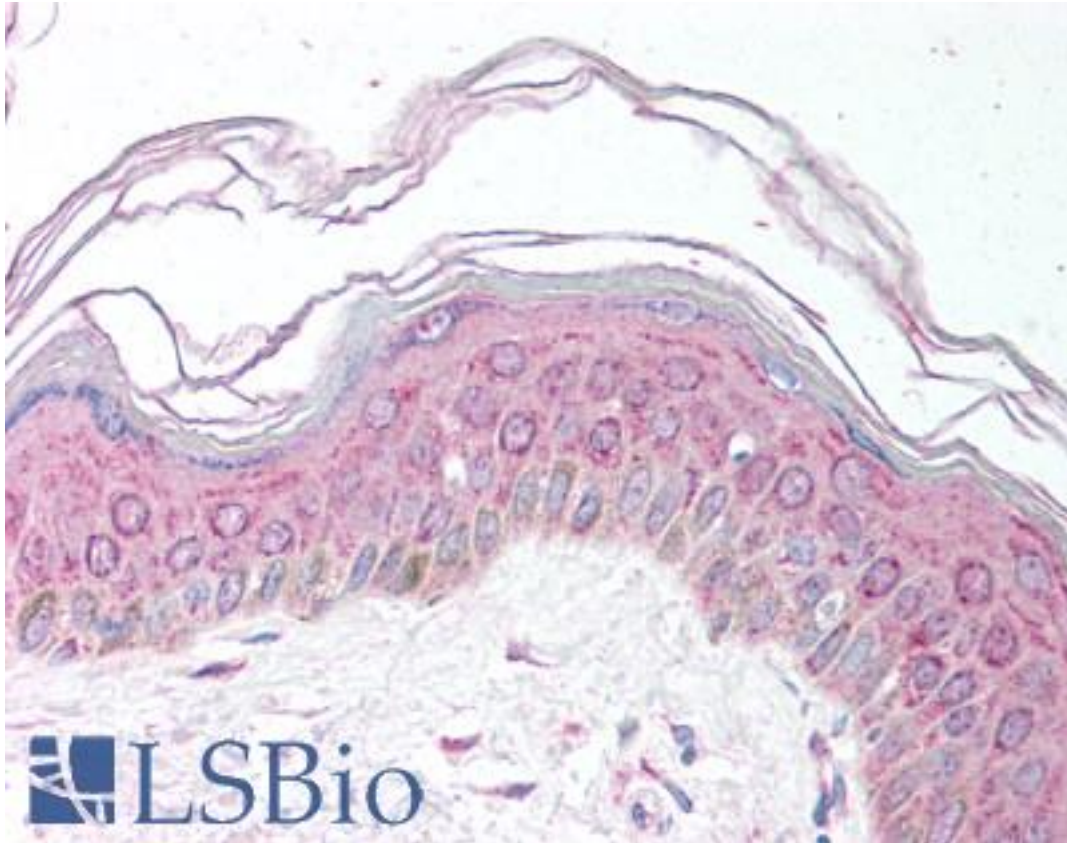


MDH1 Sheep anti-Pig Polyclonal Antibody - LS-B1446 - LSBio

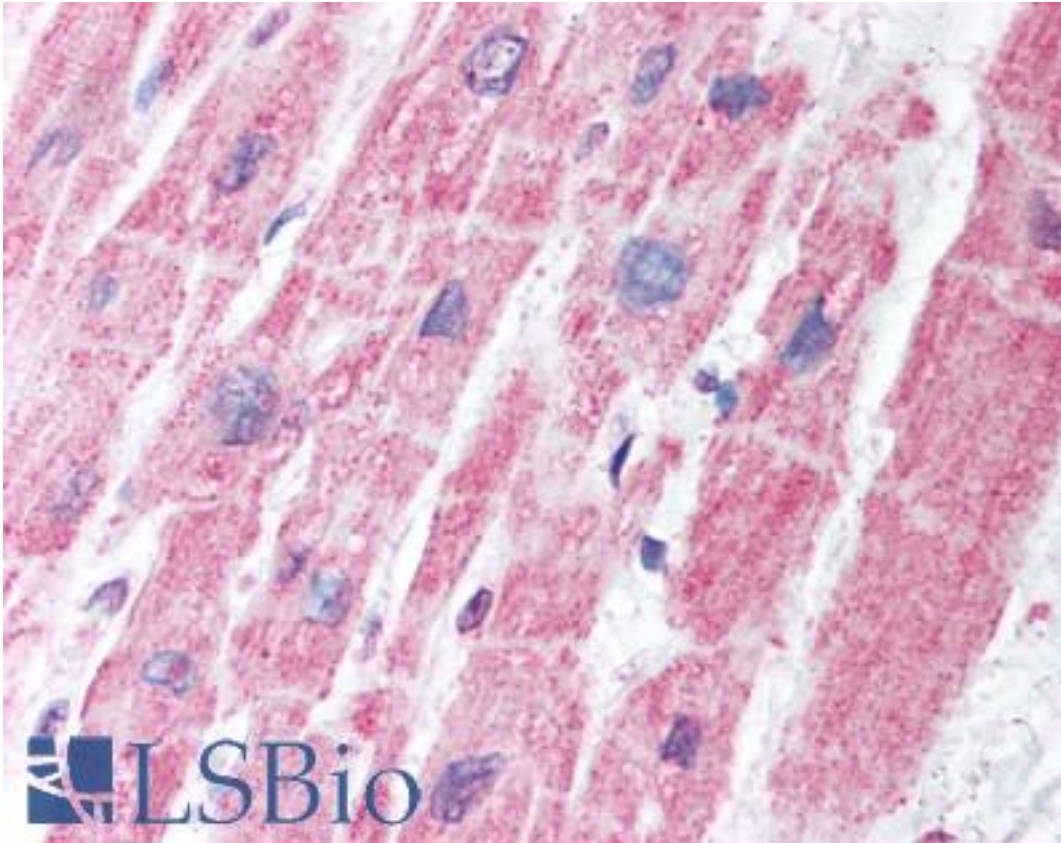
<b>CatalogID:</b>	LS-B1446
<b>Validation:</b>	This antibody replaces catalog number LS-C18842. It has been validated for use in the following assays: IHC.
<b>Target:</b>	malate dehydrogenase 1, NAD (soluble) (MDH1)
<b>Synonyms:</b>	MDH1 Antibody, Cytosolic malate dehydrogenase Antibody, Diiodophenylpyruvate reductase Antibody, MOR2 Antibody, MDH-s Antibody, MDHA Antibody, MGC:1375 Antibody, Soluble malate dehydrogenase Antibody
<b>Host</b>	MDH1 antibody was produced in Sheep
<b>Clonality:</b>	Polyclonal
<b>Immunogen Species:</b>	MDH1 antibody was raised against Pig
<b>Immunogen:</b>	MDH1 antibody was raised against purified Malate Dehydrogenase from pig heart.
<b>Specificity:</b>	Malate Dehydrogenase [Pig Heart].
<b>Reactivity:</b>	Pig, Human
<b>Purification:</b>	Purified IgG
<b>Presentation:</b>	0.02 M potassium phosphate, 0.15 M sodium chloride, pH 7.2, 0.01% sodium azide.
<b>Recommended Storage:</b>	Short term 4°C, long term aliquot and store at -20°C, avoid freeze thaw cycles.
<b>Usage Summary:</b>	Immunohistochemistry: LS-B1446 was validated for use in immunohistochemistry on a panel of 21 formalin-fixed, paraffin-embedded (FFPE) human tissues after heat induced antigen retrieval in pH 6.0 citrate buffer. After incubation with the primary antibody, slides were incubated with biotinylated secondary antibody, followed by alkaline phosphatase-streptavidin and chromogen. The stained slides were evaluated by a pathologist to confirm staining specificity. The optimal working concentration for LS-B1446 was determined to be 5 ug/ml.
<b>Uses:</b>	IHC - Paraffin (5 µg/ml), Western blot, Immunoprecipitation, ELISA (Optimal dilution to be determined by the researcher)
<b>Size:</b>	50 µl
<b>Concentration:</b>	10 mg/ml

**Immunohistochemistry Image:**



Anti-MDH1 antibody IHC of human skin. Immunohistochemistry of formalin-fixed, paraffin-embedded tissue after heat-induced antigen retrieval. Antibody LS-B1446 concentration 5 ug/ml.

**Immunohistochemistry Image:**



Anti-MDH1 antibody IHC of human heart. Immunohistochemistry of formalin-fixed, paraffin-embedded tissue after heat-induced antigen retrieval. Antibody LS-B1446 concentration 5 ug/ml.

**Requested From:**

Japan

Laboratory Reagent For In Vitro Research Use Only

Not for resale without prior written consent from LifeSpan BioSciences, Inc.

Created on 9/23/2014

© 2014 LifeSpan BioSciences