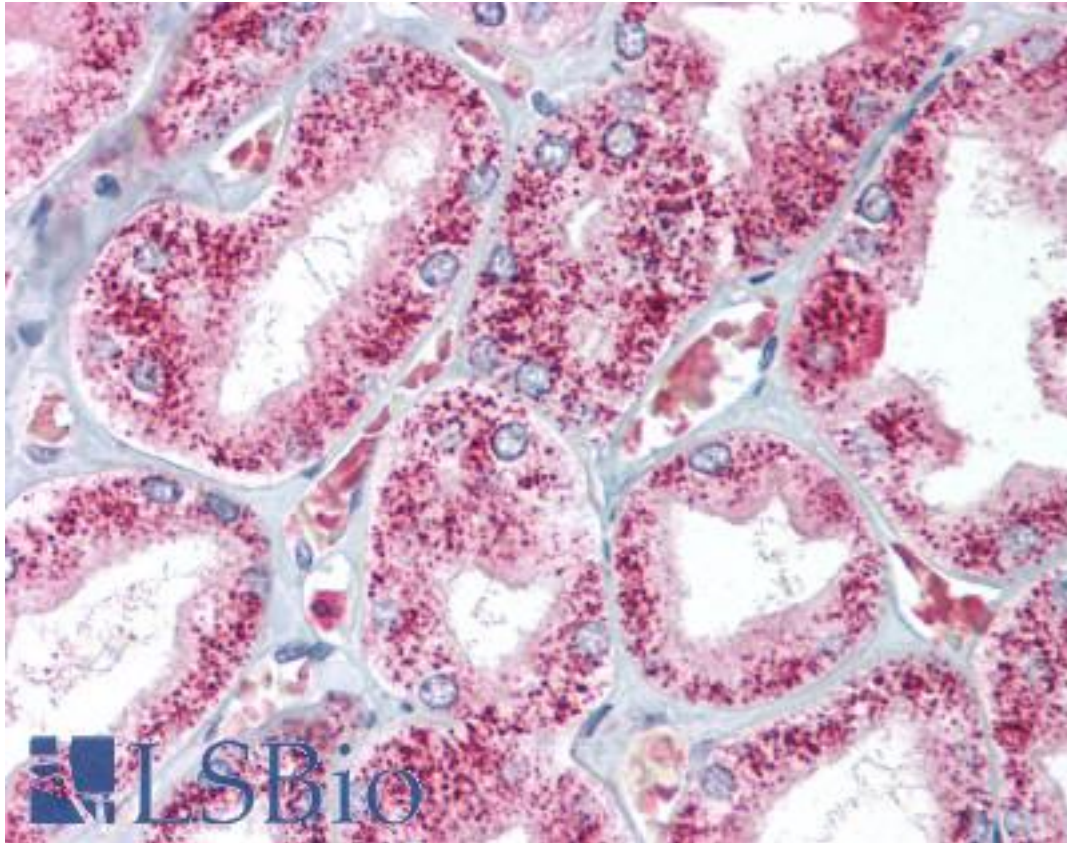


CAT / Catalase Rabbit anti-Bovine Polyclonal Antibody - LS-B1441 - LSBio

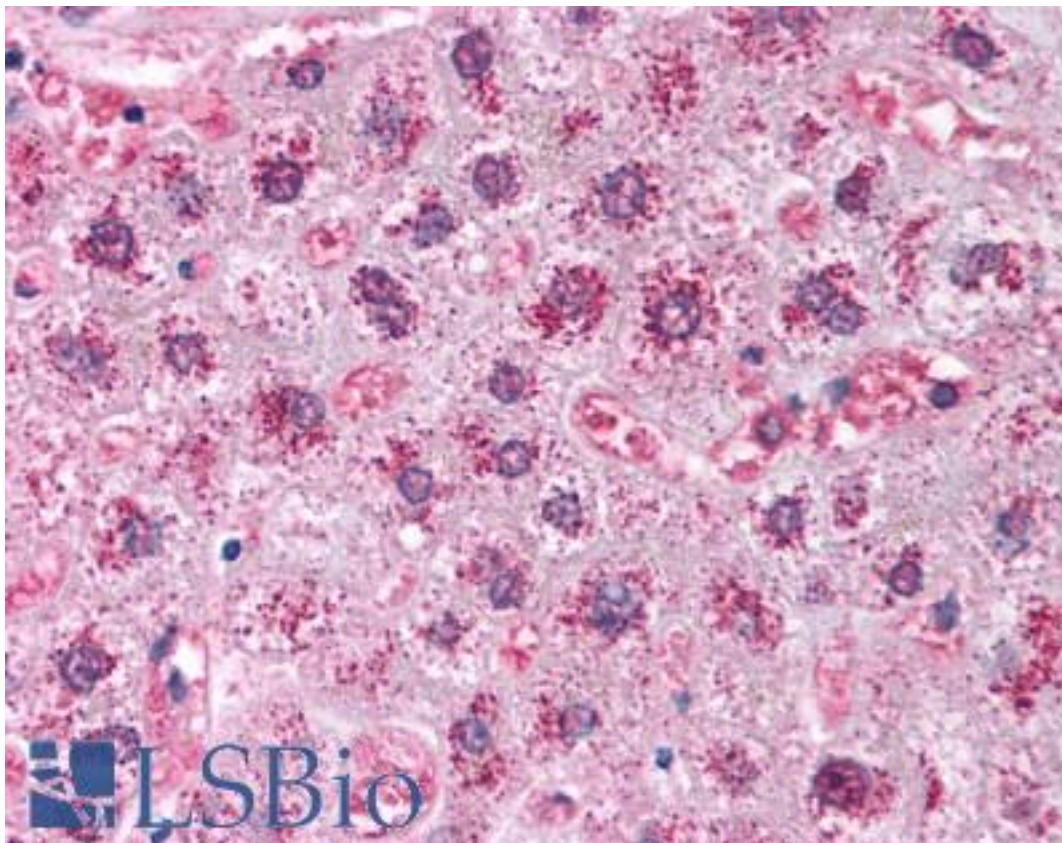
CatalogID:	LS-B1441
Validation:	This antibody replaces catalog number LS-C18765. It has been validated for use in the following assays: IHC.
Target:	catalase
Synonyms:	CAT Antibody, Catalase Antibody
Host	CAT antibody was produced in Rabbit
Clonality:	Polyclonal
Immunogen Species:	CAT / Catalase antibody was raised against Bovine
Specificity:	Catalase [Bovine liver].
Reactivity:	Bovine, Human
Purification:	Purified IgG
Presentation:	0.02 M Potassium Phosphate, 0.15 M Sodium Chloride, pH 7.2, 0.01% (w/v) Sodium Azide
Recommended Storage:	+4°C or -20°C, Avoid repeated freezing and thawing.
Usage Summary:	Immunohistochemistry: LS-B1441 was validated for use in immunohistochemistry on a panel of 21 formalin-fixed, paraffin-embedded (FFPE) human tissues after heat induced antigen retrieval in pH 6.0 citrate buffer. After incubation with the primary antibody, slides were incubated with biotinylated secondary antibody, followed by alkaline phosphatase-streptavidin and chromogen. The stained slides were evaluated by a pathologist to confirm staining specificity. The optimal working concentration for LS-B1441 was determined to be 5 ug/ml.
Uses:	IHC - Paraffin (5 µg/ml), Immunofluorescence, Western blot, Immunoprecipitation, ELISA (Optimal dilution to be determined by the researcher)
Size:	50 µl
Concentration:	10 mg/ml

Immunohistochemistry Image:



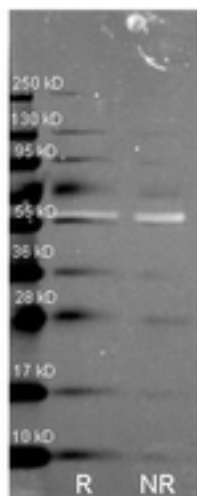
Anti-Catalase antibody IHC staining of human kidney. Immunohistochemistry of formalin-fixed, paraffin-embedded tissue after heat-induced antigen retrieval. Antibody LS-B1441 concentration 5 ug/ml.

Immunohistochemistry Image:



Anti-Catalase antibody IHC staining of human liver. Immunohistochemistry of formalin-fixed, paraffin-embedded tissue after heat-induced antigen retrieval. Antibody LS-B1441 concentration 5 ug/ml.

Western Blot Image:



Anti-Catalase Polyclonal Antibody-Western blot. Rabbit anti-Catalase antibody (LS-B1441 lot 25599) was used to detect Catalase under reducing (R) and non-reducing (NR) conditions. Reduced samples of purified Catalase contained 4% BME and were boiled for 5 minutes. Samples of ~1 ug of protein per lane were run by SDS-PAGE. Protein was transferred to nitrocellulose and probed with 1:1000 dilution of anti-Catalase antibody (LS-B1441 lot 25599 ON 4 C) and detection was using Dylight 488 conjugated Donkey anti-rabbit (1:10K 1.5 hr RT in MB-070) imaged on the BioRad VersaDoc System.

Requested From:	Japan
Laboratory Reagent For In Vitro Research Use Only	
Not for resale without prior written consent from LifeSpan BioSciences, Inc.	
Created on 9/23/2014	
© 2014 LifeSpan BioSciences	