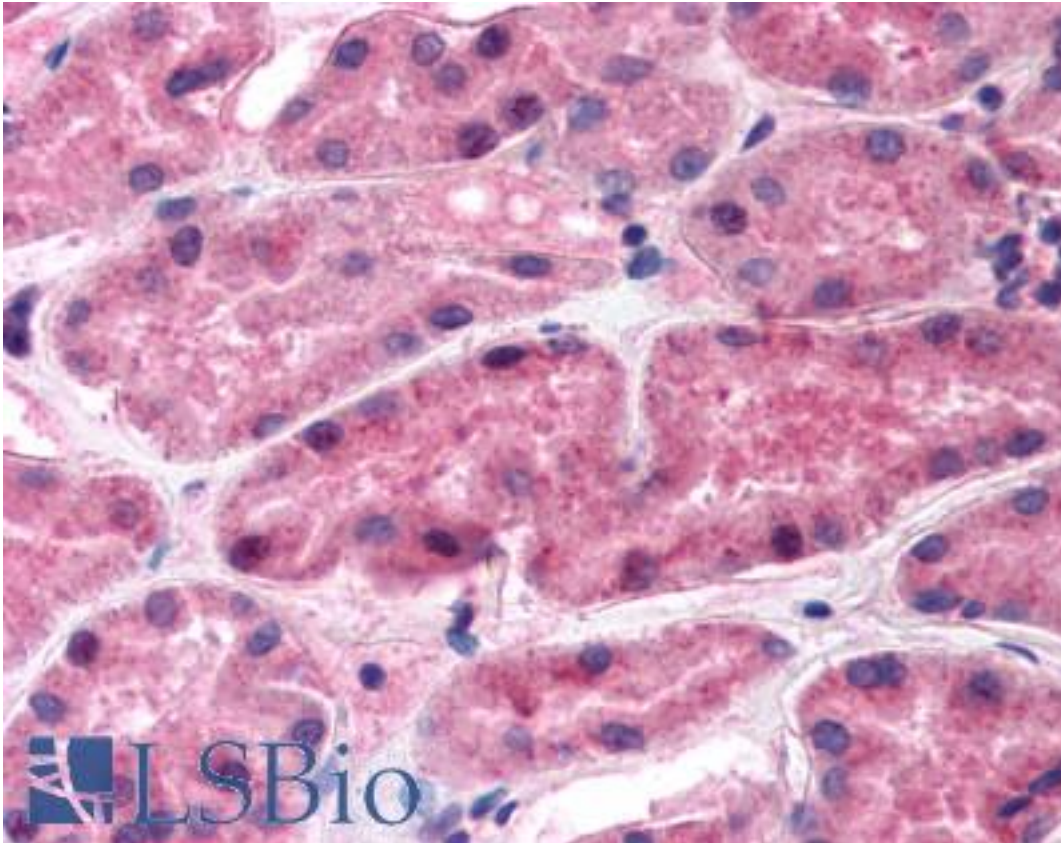


REN / Renin Sheep anti-Human Polyclonal Antibody - LS-B144 - LSBio	
CatalogID:	LS-B144
Validation:	This antibody replaces catalog number LS-C3393. It has been validated for use in the following assays: IHC.
Target:	renin
Synonyms:	REN Antibody, Angiotensin-forming enzyme Antibody, Angiotensinogenase Antibody, HNFJ2 Antibody, RENAA Antibody, Renin precursor, renal Antibody, Renin Antibody
Family / Subfamily:	Protease / Aspartic A1
Host	REN antibody was produced in Sheep
Clonality:	Polyclonal
Immunogen Species:	REN / Renin antibody was raised against Human
Immunogen:	REN / Renin antibody was raised against recombinant full length wild-type human renin (Glycosylated).
Specificity:	Human renin
Reactivity:	Human
Purification:	Protein G purified
Presentation:	0.05 M sodium phosphate; 0.1 M sodium chloride; 1 mM EDTA;, pH 6.6.
Recommended Storage:	Store at -70°C, avoid freeze/thaw cycles.
Usage Summary:	Immunohistochemistry: LS-B144 was validated for use in immunohistochemistry on a panel of 21 formalin-fixed, paraffin-embedded (FFPE) human tissues after heat induced antigen retrieval in pH 6.0 citrate buffer. After incubation with the primary antibody, slides were incubated with biotinylated secondary antibody, followed by alkaline phosphatase-streptavidin and chromogen. The stained slides were evaluated by a pathologist to confirm staining specificity. The optimal working concentration for LS-B144 was determined to be 2.5 ug/ml.
Uses:	IHC - Paraffin (2.5 µg/ml) (Optimal dilution to be determined by the researcher)
Size:	50 µg
Concentration:	1 mg/ml

Immunohistochemistry Image:



Anti-REN / Renin antibody IHC of human kidney. Immunohistochemistry of formalin-fixed, paraffin-embedded tissue after heat-induced antigen retrieval. Antibody LS-B144 concentration 5 ug/ml.

Requested From:

Japan

Laboratory Reagent For In Vitro Research Use Only

Not for resale without prior written consent from LifeSpan BioSciences, Inc.

Created on 9/23/2014

© 2014 LifeSpan BioSciences