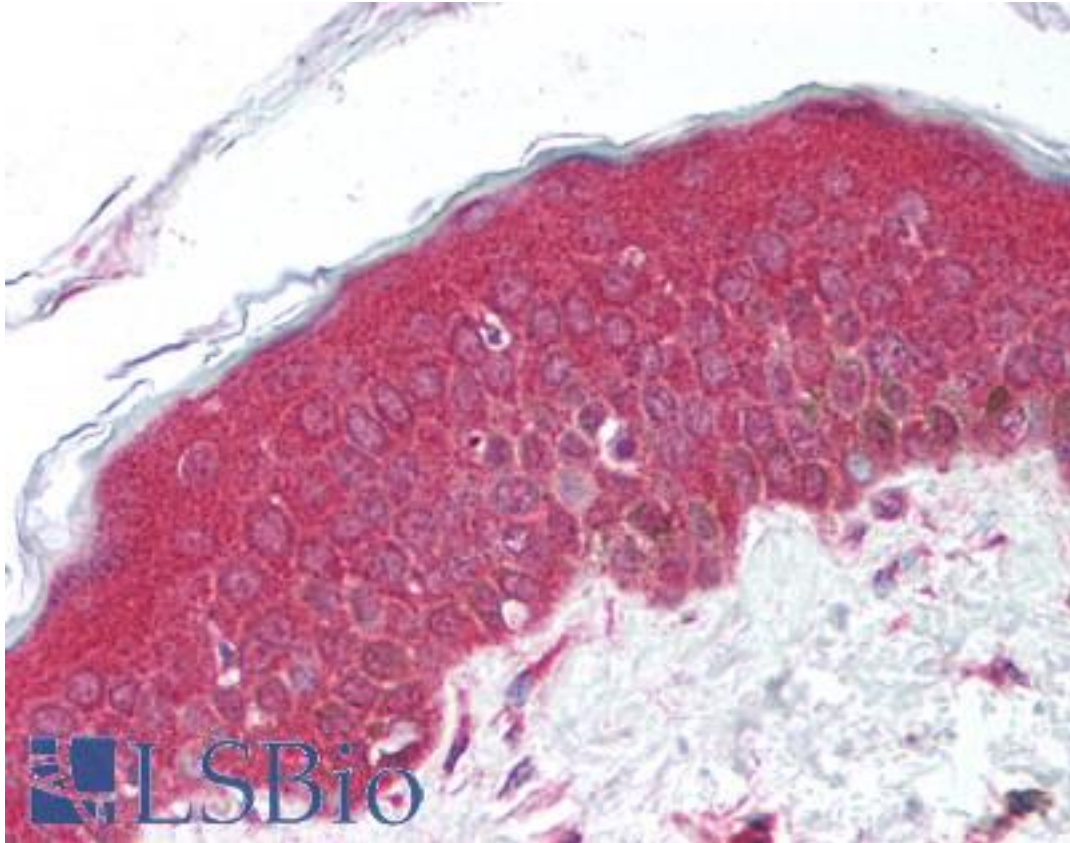


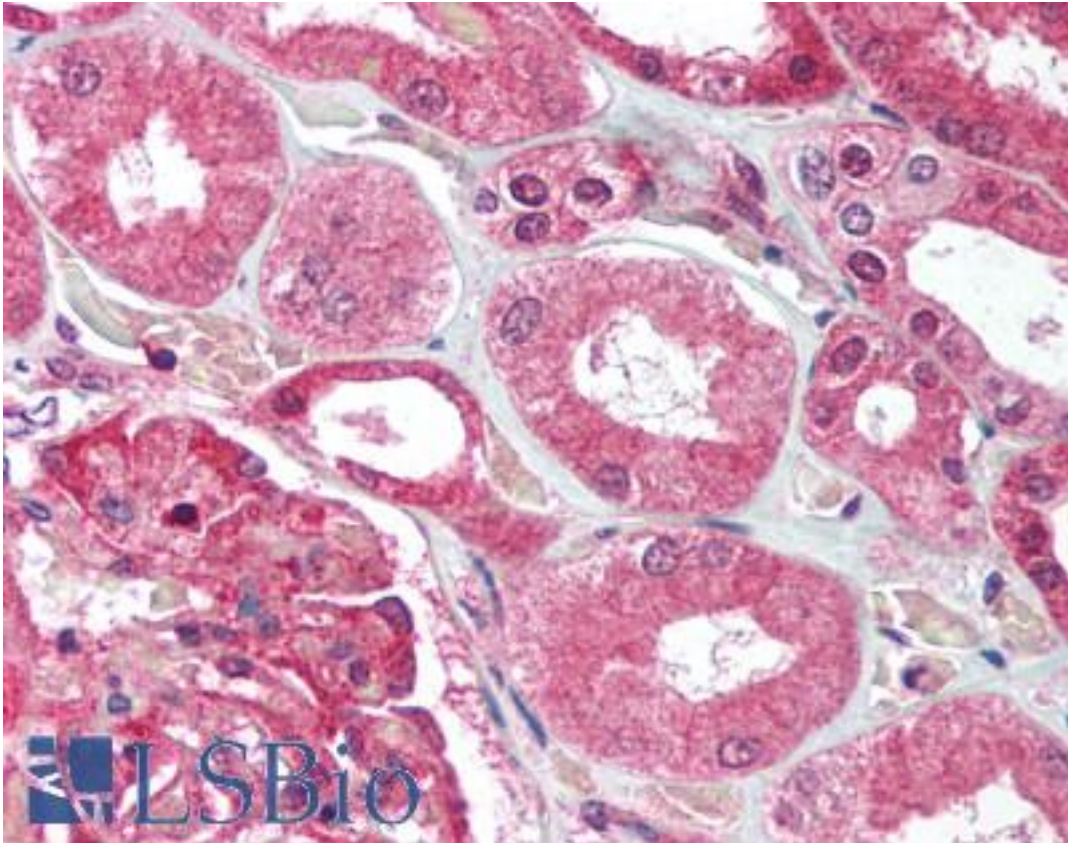
UBE2N / UBC13 Rabbit anti-Human Polyclonal (C-Terminus) Antibody - LS-B1433 - LSBio	
CatalogID:	LS-B1433
Validation:	This antibody replaces catalog number LS-C450. It has been validated for use in the following assays: IHC.
Target:	ubiquitin-conjugating enzyme E2N (UBE2N)
Synonyms:	UBE2N Antibody, BLU Antibody, UbcH13 Antibody, UbcH-ben Antibody, Ubiquitin carrier protein N Antibody, Yeast UBC13 homolog Antibody, UBC13 Antibody, Ubiquitin-protein ligase N Antibody
Host	UBE2N antibody was produced in Rabbit
Clonality:	Polyclonal
Immunogen Species:	UBE2N / UBC13 antibody was raised against Human
Antigen Type:	Synthetic peptide
Immunogen:	UBE2N / UBC13 antibody was raised against synthetic peptide from human UBE2N.
Specificity:	peptide corresponding to 15 amino acids near the C-terminus of human UBC13
Epitope:	C-Terminus
Reactivity:	Human, Mouse, Rat
Purification:	Ion exchange chromatography
Presentation:	PBS, 0.02% sodium azide.
Recommended Storage:	Short term 4°C, long term aliquot and store at -20°C, avoid freeze thaw cycles. Store undiluted.
Usage Summary:	Immunohistochemistry: LS-B1433 was validated for use in immunohistochemistry on a panel of 21 formalin-fixed, paraffin-embedded (FFPE) human tissues after heat induced antigen retrieval in pH 6.0 citrate buffer. After incubation with the primary antibody, slides were incubated with biotinylated secondary antibody, followed by alkaline phosphatase-streptavidin and chromogen. The stained slides were evaluated by a pathologist to confirm staining specificity. The optimal working concentration for LS-B1433 was determined to be 2.5 ug/ml.
Uses:	IHC - Paraffin (2.5 µg/ml), Western blot (0.5 - 1 µg/ml) (Optimal dilution to be determined by the researcher)
Size:	50 µg
Concentration:	1 mg/ml

Immunohistochemistry Image:



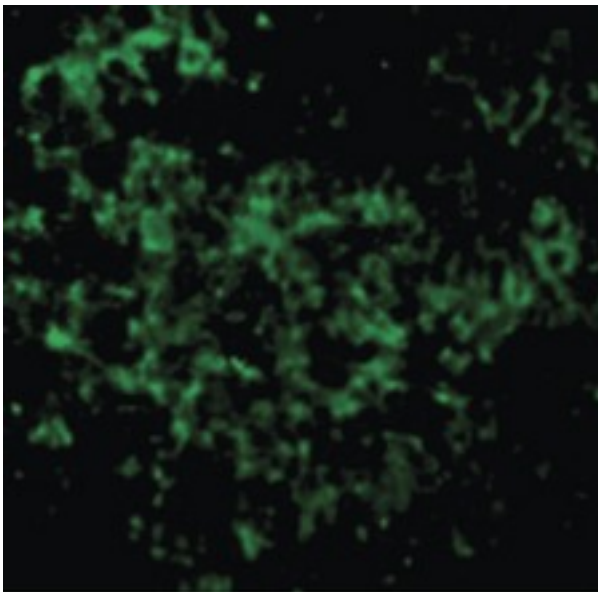
Anti-UBE2N antibody IHC of human skin. Immunohistochemistry of formalin-fixed, paraffin-embedded tissue after heat-induced antigen retrieval. Antibody LS-B1433 concentration 5 ug/ml.

Immunohistochemistry Image:



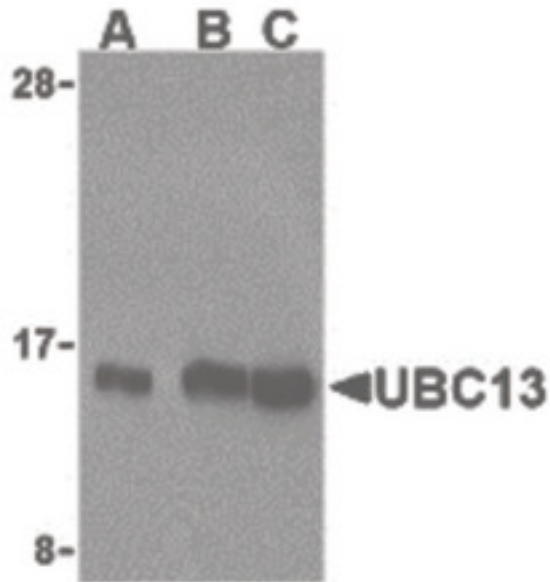
Anti-UBE2N antibody IHC of human kidney. Immunohistochemistry of formalin-fixed, paraffin-embedded tissue after heat-induced antigen retrieval. Antibody LS-B1433 concentration 5 ug/ml.

Immunofluorescence Image:



Immunofluorescence of UBC13 in Mouse Thymus cells with UBC13 antibody at 10 ug/ml.

Western Blot Image:



Western blot of UBC13 in human small intestine cell lysates with UBC13 antibody at (A) 0.5, (B) 1, and (C) 2 ug/ml.

Requested From:

Japan

Laboratory Reagent For In Vitro Research Use Only

Not for resale without prior written consent from LifeSpan BioSciences, Inc.

Created on 9/23/2014

© 2014 LifeSpan BioSciences