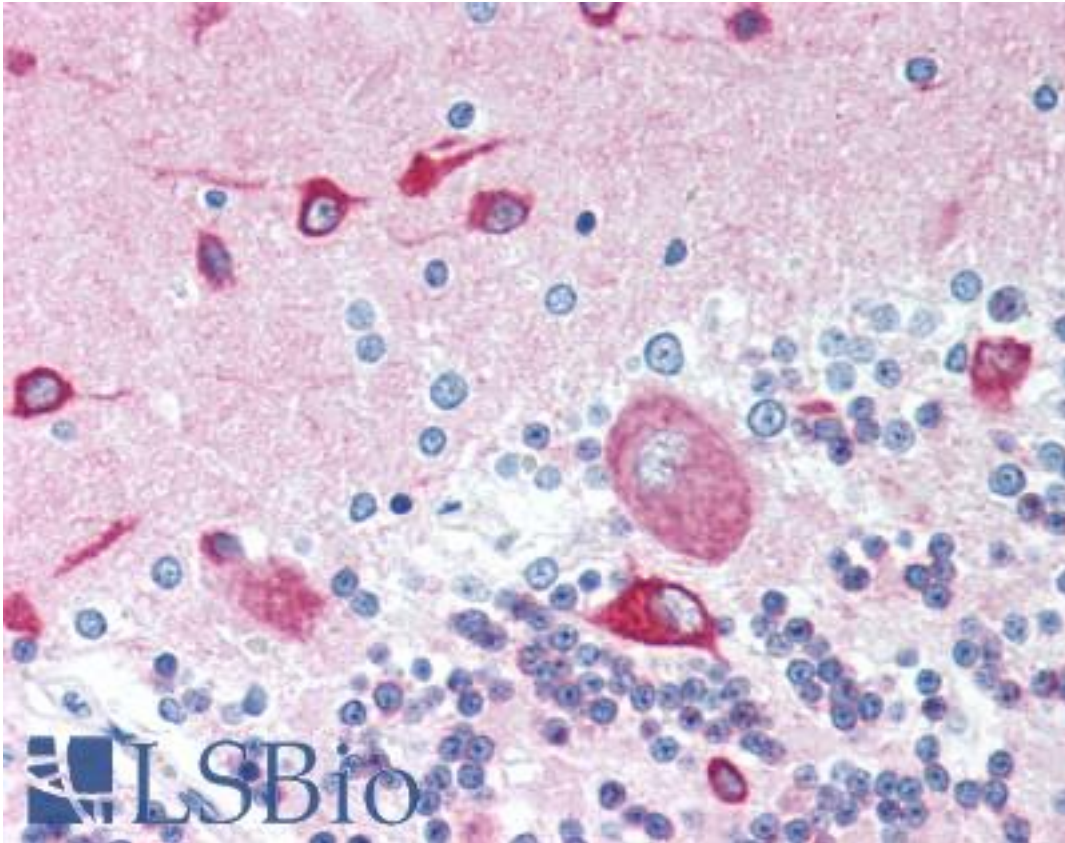


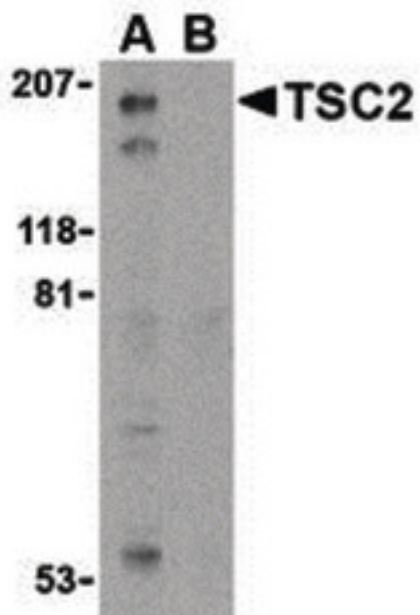
Tuberin / TSC2 Rabbit anti-Human Polyclonal (C-Terminus) Antibody - LS-B1432 - LSBio	
CatalogID:	LS-B1432
Validation:	This antibody replaces catalog number LS-C479. It has been validated for use in the following assays: IHC.
Target:	tuberous sclerosis 2 (TSC2)
Synonyms:	TSC2 Antibody, LAM Antibody, Tuberous sclerosis 2 protein Antibody, TSC4 Antibody, Tuberin Antibody, Tuberous sclerosis 2 Antibody
Host	TSC2 antibody was produced in Rabbit
Clonality:	Polyclonal
Immunogen Species:	Tuberin / TSC2 antibody was raised against Human
Antigen Type:	Synthetic peptide
Immunogen:	Tuberin / TSC2 antibody was raised against synthetic peptide from human TSC2.
Specificity:	15 amino acid peptide from near the carboxy-terminus of human TSC2
Epitope:	C-Terminus
Reactivity:	Human, Mouse
Purification:	Immunoaffinity purified
Presentation:	PBS, 0.02% sodium azide.
Recommended Storage:	Short term 4°C, long term aliquot and store at -20°C, avoid freeze thaw cycles. Store undiluted.
Usage Summary:	Immunohistochemistry: LS-B1432 was validated for use in immunohistochemistry on a panel of 21 formalin-fixed, paraffin-embedded (FFPE) human tissues after heat induced antigen retrieval in pH 6.0 citrate buffer. After incubation with the primary antibody, slides were incubated with biotinylated secondary antibody, followed by alkaline phosphatase-streptavidin and chromogen. The stained slides were evaluated by a pathologist to confirm staining specificity. The optimal working concentration for LS-B1432 was determined to be 5 ug/ml.
Uses:	IHC - Paraffin (5 µg/ml), Western blot (1 µg/ml) (Optimal dilution to be determined by the researcher)
Size:	50 µg
Concentration:	1 mg/ml

Immunohistochemistry Image:



Anti-TSC2 / Tuberlin antibody IHC of human brain, cerebellum. Immunohistochemistry of formalin-fixed, paraffin-embedded tissue after heat-induced antigen retrieval. Antibody LS-B1432 concentration 5 ug/ml.

Western Blot Image:



Western blot of TSC2 in L1210 cell lysate with TSC2 antibody at 1 ug/ml in the (A) absence and (B) presence of blocking peptide.

Requested From:	Japan
Laboratory Reagent For In Vitro Research Use Only	
Not for resale without prior written consent from LifeSpan BioSciences, Inc.	
Created on 9/23/2014	
© 2014 LifeSpan BioSciences	