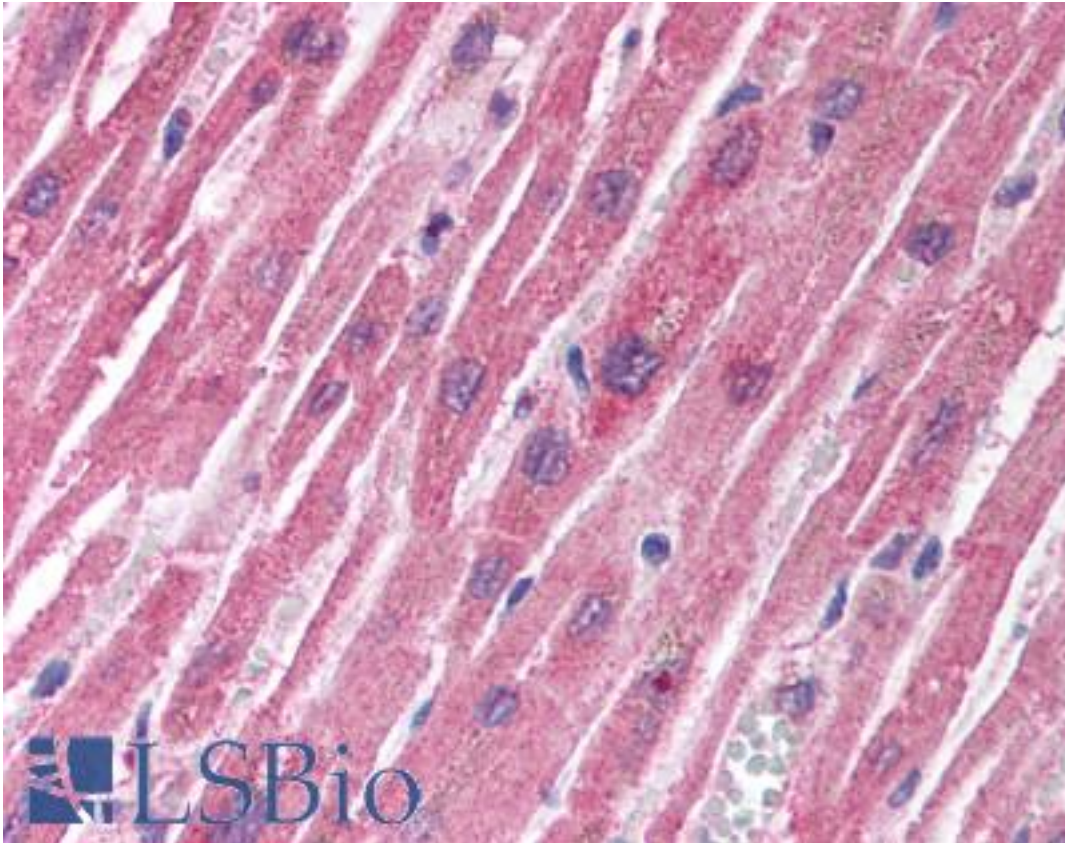


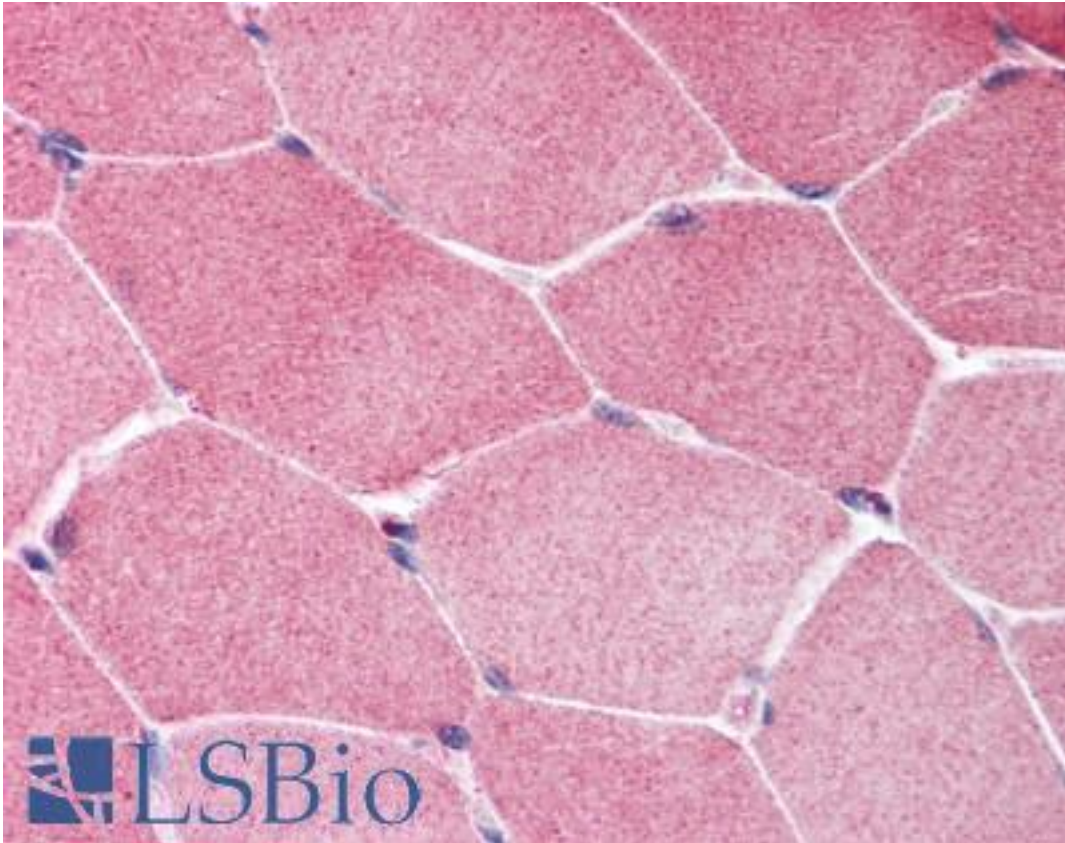
Hamartin / TSC1 Rabbit anti-Human Polyclonal (C-Terminus) Antibody - LS-B1431 - LSBio	
CatalogID:	LS-B1431
Validation:	This antibody replaces catalog number LS-C19505. It has been validated for use in the following assays: IHC.
Target:	tuberous sclerosis 1 (TSC1)
Synonyms:	TSC1 Antibody, LAM Antibody, Tuberous sclerosis 1 protein Antibody, Tuberous sclerosis 1 Antibody, Hamartin Antibody, KIAA0243 Antibody, TSC Antibody, Tumor suppressor Antibody
Host	TSC1 antibody was produced in Rabbit
Clonality:	Polyclonal
Immunogen Species:	Hamartin / TSC1 antibody was raised against Human
Antigen Type:	Synthetic peptide
Immunogen:	Hamartin / TSC1 antibody was raised against synthetic peptide from human TSC1.
Specificity:	15 amino acid peptide from the carboxy terminus of human TSC1
Epitope:	C-Terminus
Reactivity:	Human, Mouse
Purification:	Immunoaffinity purified
Presentation:	PBS, 0.02% sodium azide.
Recommended Storage:	Short term 4°C, long term aliquot and store at -20°C, avoid freeze thaw cycles. Store undiluted.
Usage Summary:	Immunohistochemistry: LS-B1431 was validated for use in immunohistochemistry on a panel of 21 formalin-fixed, paraffin-embedded (FFPE) human tissues after heat induced antigen retrieval in pH 6.0 citrate buffer. After incubation with the primary antibody, slides were incubated with biotinylated secondary antibody, followed by alkaline phosphatase-streptavidin and chromogen. The stained slides were evaluated by a pathologist to confirm staining specificity. The optimal working concentration for LS-B1431 was determined to be 5 ug/ml.
Uses:	IHC - Paraffin (5 µg/ml), Western blot (4 µg/ml) (Optimal dilution to be determined by the researcher)
Size:	50 µg
Concentration:	1 mg/ml

Immunohistochemistry Image:



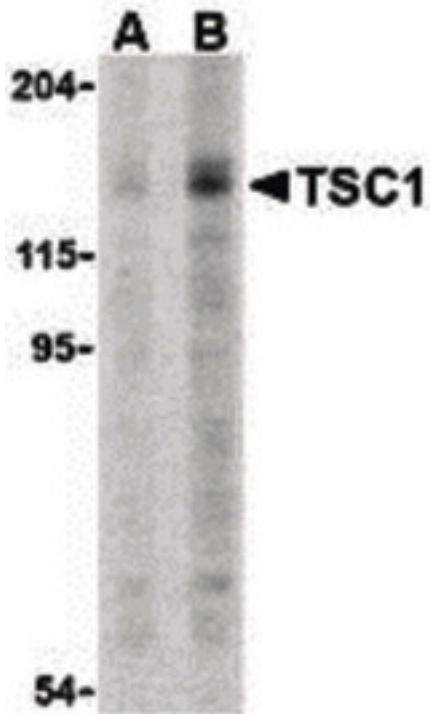
Anti-TSC1 antibody IHC of human heart. Immunohistochemistry of formalin-fixed, paraffin-embedded tissue after heat-induced antigen retrieval. Antibody LS-B1431 concentration 5 ug/ml.

Immunohistochemistry Image:



Anti-TSC1 antibody IHC of human skeletal muscle. Immunohistochemistry of formalin-fixed, paraffin-embedded tissue after heat-induced antigen retrieval. Antibody LS-B1431 concentration 5 ug/ml.

Western Blot Image:



Western blot of TSC1 in C2C12 cell lysate with TSC1 antibody at (A) 2 and (B) 4 ug.

Requested From:

Japan

Laboratory Reagent For In Vitro Research Use Only

Not for resale without prior written consent from LifeSpan BioSciences, Inc.

Created on 9/23/2014

© 2014 LifeSpan BioSciences