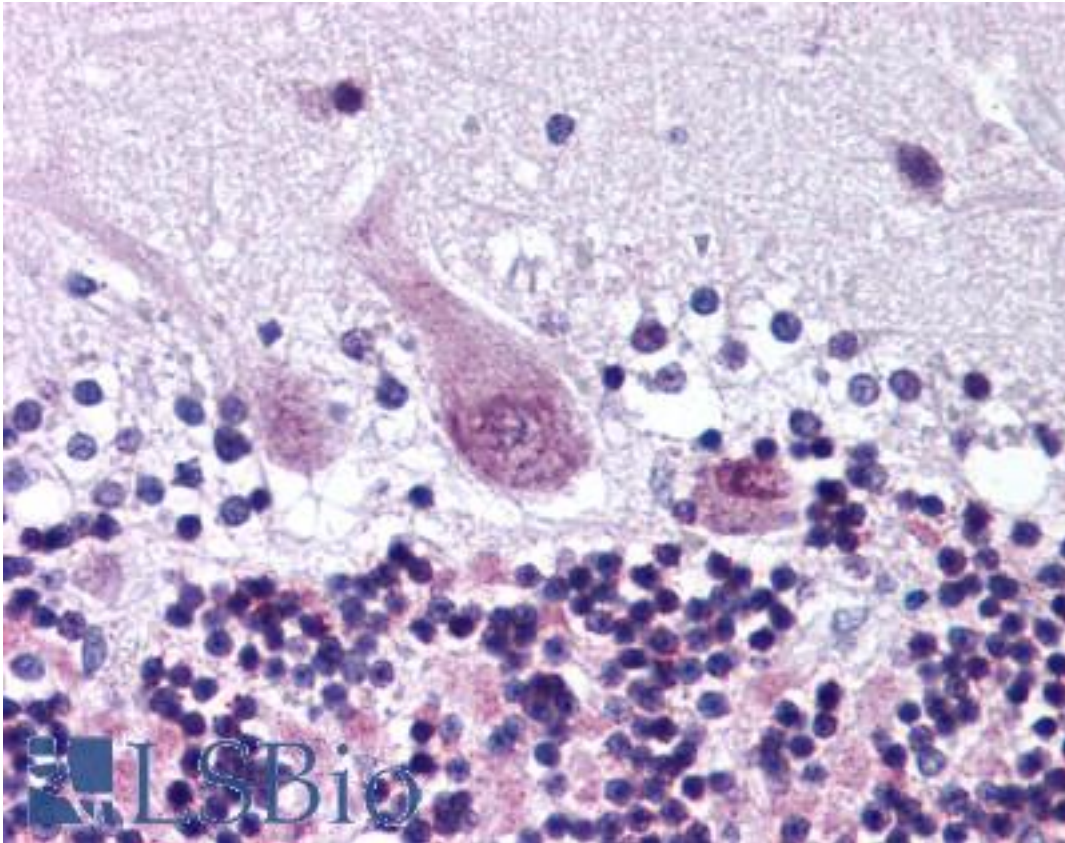


ARHGEF10 / GEF10 Rabbit anti-Human Polyclonal (aa1371-1384) Antibody - LS-B143 - LSBio	
CatalogID:	LS-B143
Validation:	This antibody replaces catalog number LS-C3304. It has been validated for use in the following assays: IHC.
Target:	Rho guanine nucleotide exchange factor (GEF) 10 (ARHGEF10)
Synonyms:	ARHGEF10 Antibody, GEF10 Antibody, KIAA0294 Antibody
Host	ARHGEF10 antibody was produced in Rabbit
Clonality:	Polyclonal
Immunogen Species:	ARHGEF10 / GEF10 antibody was raised against Human
Antigen Type:	Synthetic peptide
Immunogen:	ARHGEF10 / GEF10 antibody was raised against synthetic peptide from human ARHGEF10.
Specificity:	Amino acids 1335 to 1348 for human ARHGEF10
Epitope:	aa1371-1384
Reactivity:	Human
Purification:	Protein G purified
Presentation:	PBS, 0.1% sodium azide.
Recommended Storage:	Long term: -20°C; Short term: +4°C. Avoid repeat freeze-thaw cycles.
Usage Summary:	Immunohistochemistry: LS-B143 was validated for use in immunohistochemistry on a panel of 21 formalin-fixed, paraffin-embedded (FFPE) human tissues after heat induced antigen retrieval in pH 6.0 citrate buffer. After incubation with the primary antibody, slides were incubated with biotinylated secondary antibody, followed by alkaline phosphatase-streptavidin and chromogen. The stained slides were evaluated by a pathologist to confirm staining specificity. The optimal working concentration for LS-B143 was determined to be 20 ug/ml.
Uses:	IHC - Paraffin (20 µg/ml), ELISA (1:000 - 1:1000) (Optimal dilution to be determined by the researcher)
Size:	50 µg
Concentration:	1 mg/ml

Immunohistochemistry Image:



Anti-ARHGEF10 antibody IHC of human brain, cerebellum. Immunohistochemistry of formalin-fixed, paraffin-embedded tissue after heat-induced antigen retrieval. Antibody LS-B143 concentration 20 ug/ml.

Requested From:

Japan

Laboratory Reagent For In Vitro Research Use Only

Not for resale without prior written consent from LifeSpan BioSciences, Inc.

Created on 9/23/2014

© 2014 LifeSpan BioSciences