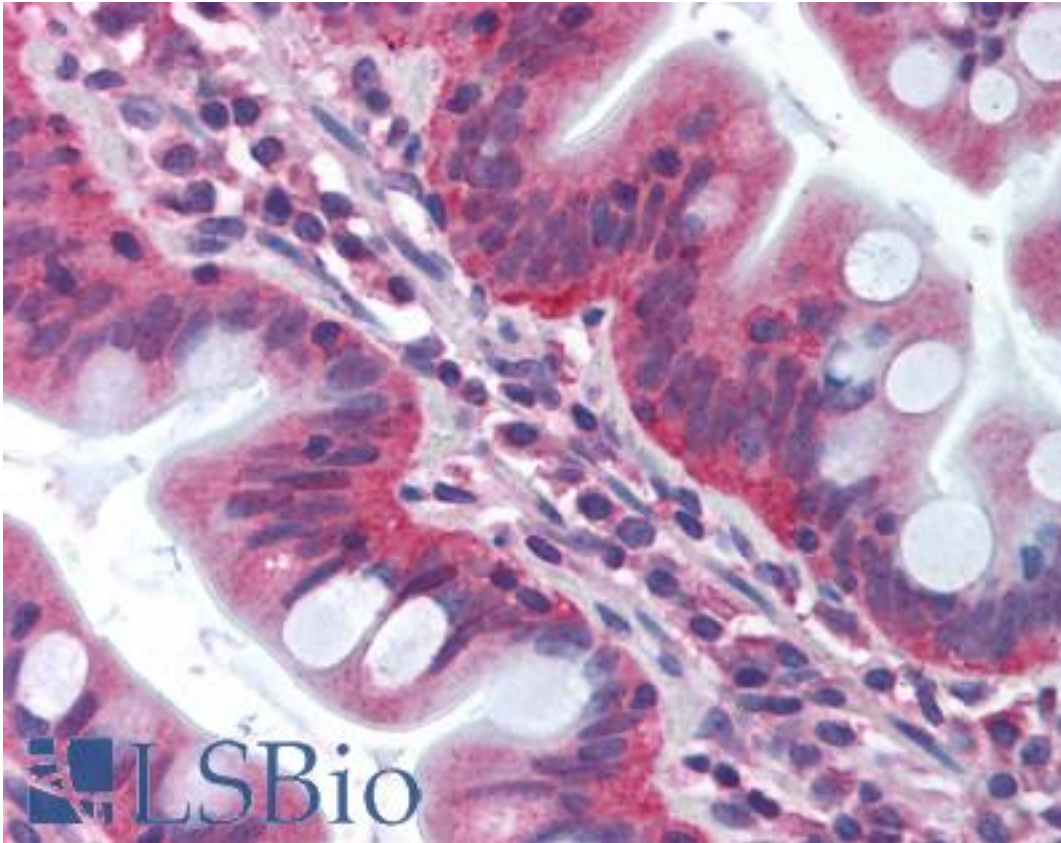


TRAF3IP2 / ACT1 Rabbit anti-Human Polyclonal (aa2-15) Antibody - LS-B1429 - LSBio

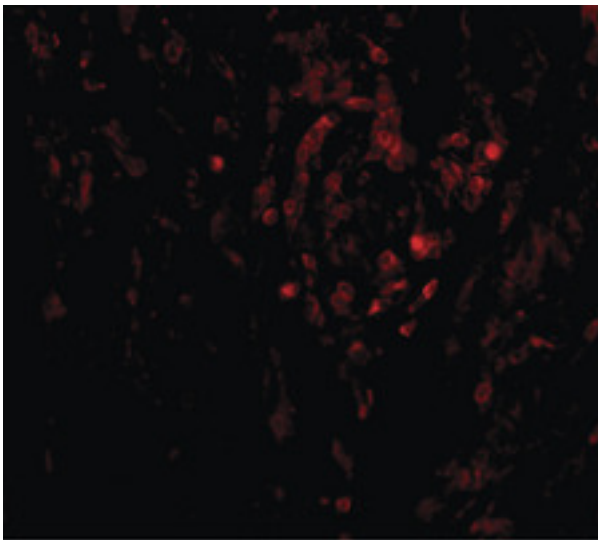
| | |
|-----------------------------|---|
| CatalogID: | LS-B1429 |
| Validation: | This antibody replaces catalog number LS-C409. It has been validated for use in the following assays: IHC. |
| Target: | TRAF3 interacting protein 2 (TRAF3IP2) |
| Synonyms: | TRAF3IP2 Antibody, C6orf2 Antibody, C6orf4 Antibody, C6orf5 Antibody, CIKS Antibody, DKFZP586G0522 Antibody, Connection to IKK and SAPK/JNK Antibody, ACT1 Antibody, Adapter protein CIKS Antibody, NFkB-activating protein ACT1 Antibody, PSORS13 Antibody, TRAF3-interacting protein 2 Antibody, C6orf6 Antibody, TRAF3 interacting protein 2 Antibody |
| Host | TRAF3IP2 antibody was produced in Rabbit |
| Clonality: | Polyclonal |
| Immunogen Species: | TRAF3IP2 / ACT1 antibody was raised against Human |
| Antigen Type: | Synthetic peptide |
| Immunogen: | TRAF3IP2 / ACT1 antibody was raised against synthetic peptide from human TRAF3IP2 / ACT1. |
| Specificity: | synthetic peptide (ppqlqetrmnrsp) corresponding to amino acids 2 to 15 of human CIKS |
| Epitope: | aa2-15 |
| Reactivity: | Human |
| Purification: | Immunoaffinity purified |
| Presentation: | PBS, 0.02% sodium azide. |
| Recommended Storage: | Short term 4°C, long term aliquot and store at -20°C, avoid freeze thaw cycles. Store undiluted. |
| Usage Summary: | Immunohistochemistry: LS-B1429 was validated for use in immunohistochemistry on a panel of 21 formalin-fixed, paraffin-embedded (FFPE) human tissues after heat induced antigen retrieval in pH 6.0 citrate buffer. After incubation with the primary antibody, slides were incubated with biotinylated secondary antibody, followed by alkaline phosphatase-streptavidin and chromogen. The stained slides were evaluated by a pathologist to confirm staining specificity. The optimal working concentration for LS-B1429 was determined to be 1 ug/ml. |
| Uses: | IHC - Paraffin (1 µg/ml), Western blot (0.5 - 1 µg/ml) (Optimal dilution to be determined by the researcher) |
| Size: | 50 µg |

Immunohistochemistry Image:



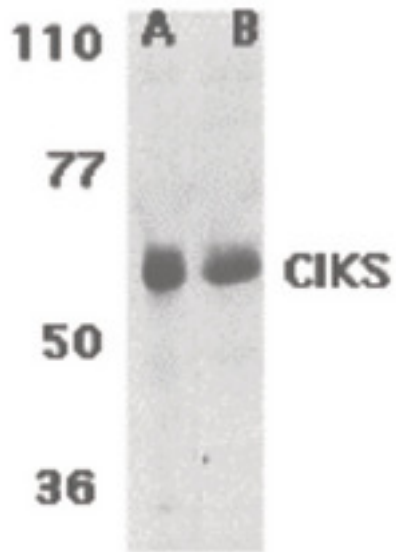
Anti-TRAF3IP2 / ACT1 antibody IHC of human small intestine. Immunohistochemistry of formalin-fixed, paraffin-embedded tissue after heat-induced antigen retrieval. Antibody LS-B1429 concentration 1 ug/ml.

Immunofluorescence Image:



Immunofluorescence of CIKS in human lung tissue with CIKS antibody at 20 ug/ml.

Western Blot Image:



Western blot of CIKS expression in human lung (lane A) and placenta (lane B) tissue lysates with CIKS antibody at 1 ug /ml.

Requested From:

Japan

Laboratory Reagent For In Vitro Research Use Only

Not for resale without prior written consent from LifeSpan BioSciences, Inc.

Created on 9/23/2014

© 2014 LifeSpan BioSciences