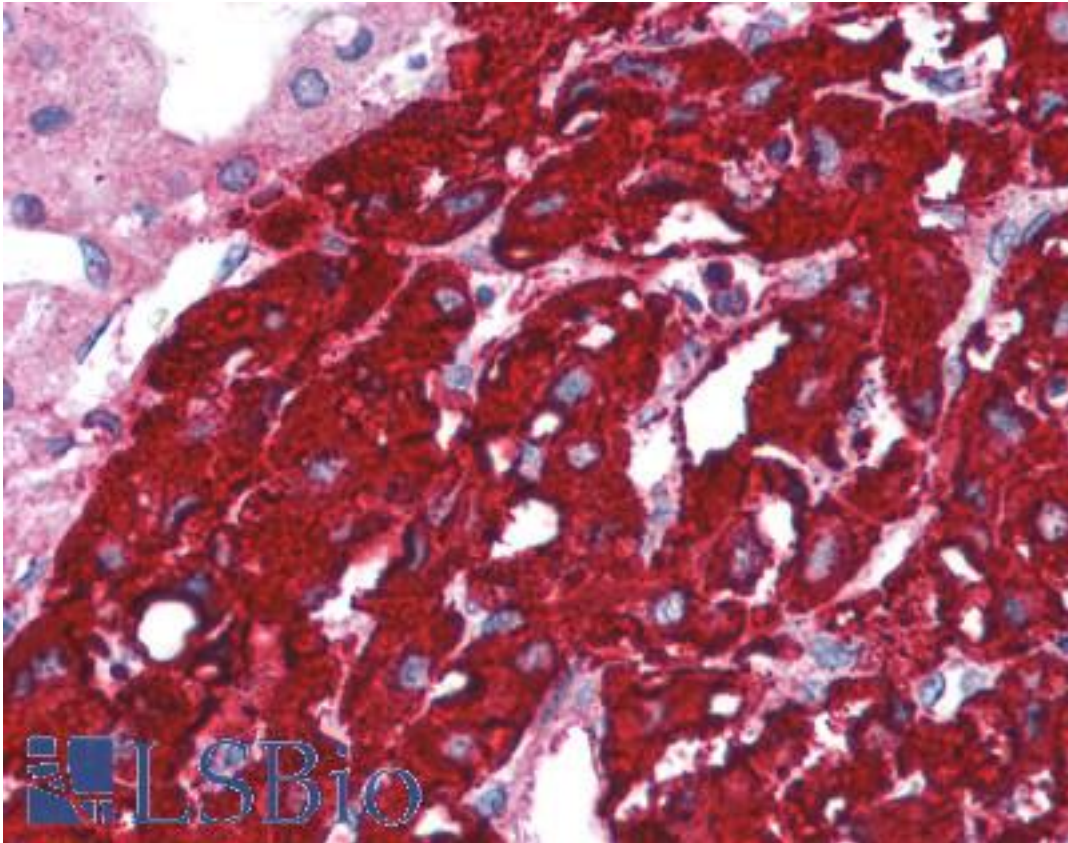


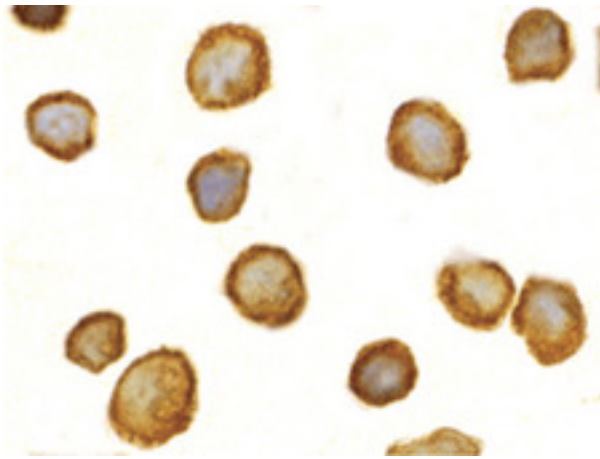
TOLLIP Rabbit anti-Human Polyclonal (Internal) Antibody - LS-B1426 - LSBio	
<b>CatalogID:</b>	LS-B1426
<b>Validation:</b>	This antibody replaces catalog number LS-C19572. It has been validated for use in the following assays: IHC.
<b>Target:</b>	toll interacting protein (TOLLIP)
<b>Synonyms:</b>	TOLLIP Antibody, Adapter protein Antibody, IL-1RAcPIP Antibody, Toll interacting protein Antibody, Toll-interacting protein Antibody
<b>Host</b>	TOLLIP antibody was produced in Rabbit
<b>Clonality:</b>	Polyclonal
<b>Immunogen Species:</b>	TOLLIP antibody was raised against Human
<b>Antigen Type:</b>	Synthetic peptide
<b>Immunogen:</b>	TOLLIP antibody was raised against synthetic peptide from human TOLLIP.
<b>Specificity:</b>	16 amino acid peptide from near the center of human TOLLIP
<b>Epitope:</b>	Internal
<b>Reactivity:</b>	Human, Mouse, Rat
<b>Purification:</b>	Immunoaffinity purified
<b>Presentation:</b>	PBS, 0.02% sodium azide.
<b>Recommended Storage:</b>	Short term 4°C, long term aliquot and store at -20°C, avoid freeze thaw cycles. Store undiluted.
<b>Usage Summary:</b>	Immunohistochemistry: LS-B1426 was validated for use in immunohistochemistry on a panel of 21 formalin-fixed, paraffin-embedded (FFPE) human tissues after heat induced antigen retrieval in pH 6.0 citrate buffer. After incubation with the primary antibody, slides were incubated with biotinylated secondary antibody, followed by alkaline phosphatase-streptavidin and chromogen. The stained slides were evaluated by a pathologist to confirm staining specificity. The optimal working concentration for LS-B1426 was determined to be 5 ug/ml.
<b>Uses:</b>	IHC - Paraffin (5 µg/ml), ICC, Western blot (0.5 - 2 µg/ml) (Optimal dilution to be determined by the researcher)
<b>Size:</b>	50 µg
<b>Concentration:</b>	1 mg/ml

**Immunohistochemistry Image:**



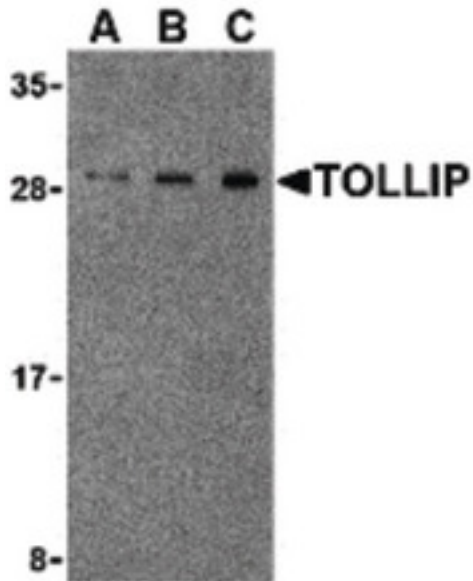
Anti-TOLLIP antibody IHC of human adrenal. Immunohistochemistry of formalin-fixed, paraffin-embedded tissue after heat-induced antigen retrieval. Antibody LS-B1426 concentration 5 ug/ml.

**Immunocytochemistry Image:**



Immunocytochemistry of TOLLIP in THP-1 cells with TOLLIP antibody at 2 ug/ml.

**Western Blot Image:**



Western blot of TOLLIP in rat brain cell lysate with TOLLIP antibody at (A) 0.5, (B) 1 and (C) 2ug/ml.

**Requested From:**

Japan

Laboratory Reagent For In Vitro Research Use Only

Not for resale without prior written consent from LifeSpan BioSciences, Inc.

Created on 9/23/2014

© 2014 LifeSpan BioSciences