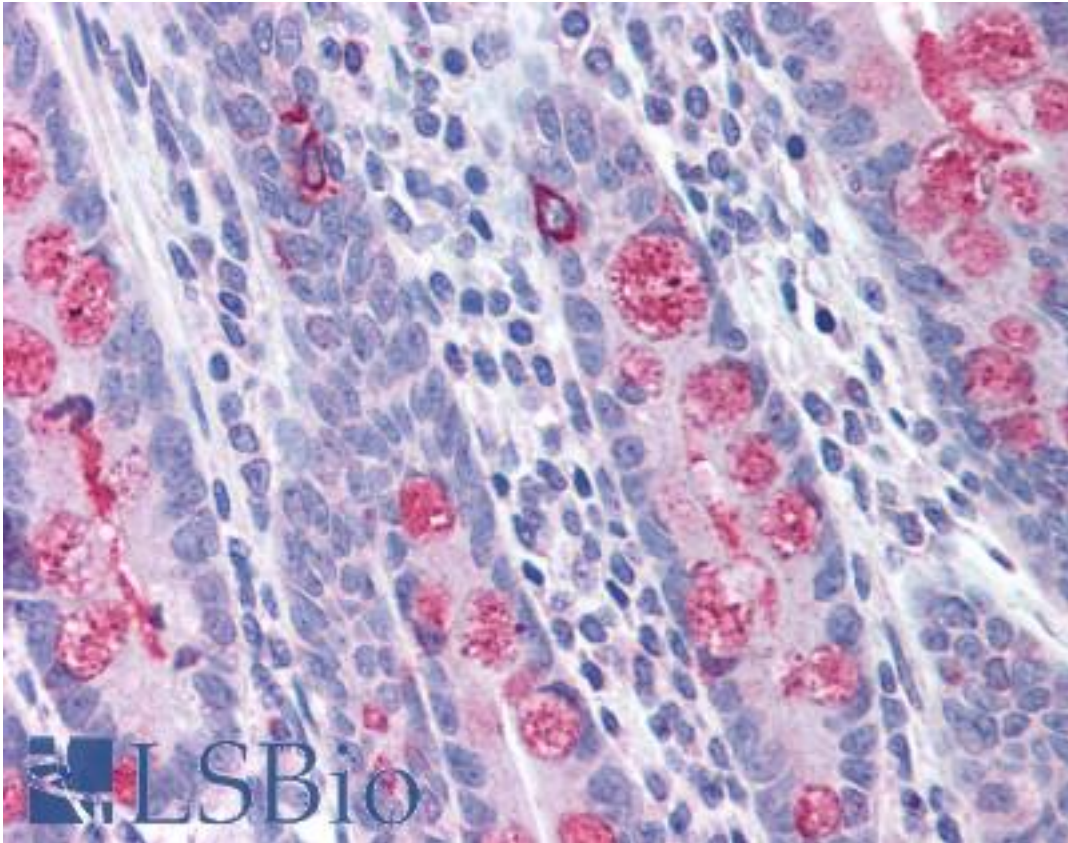


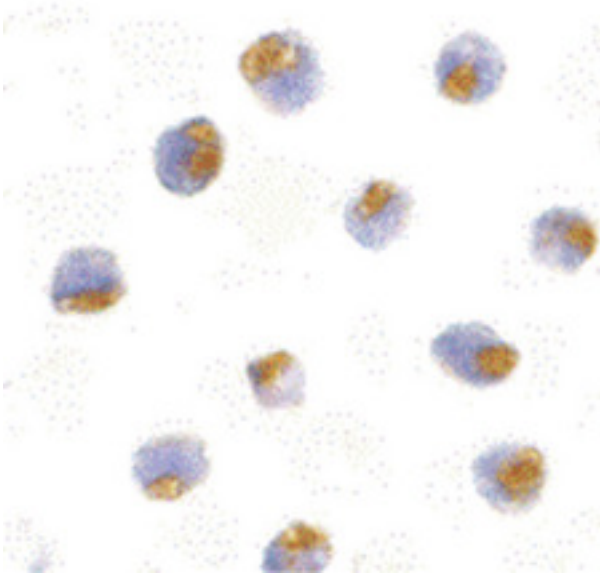
TLR1 Rabbit anti-Human Polyclonal (Internal) Antibody - LS-B1415 - LSBio	
CatalogID:	LS-B1415
Validation:	This antibody replaces catalog number LS-C19547. It has been validated for use in the following assays: IHC.
Target:	toll-like receptor 1 (TLR1)
Synonyms:	TLR1 Antibody, CD281 antigen Antibody, KIAA0012 Antibody, Rsc786 Antibody, Toll-like receptor 1 Antibody, TIL. LPRS5 Antibody, TIL Antibody, CD281 Antibody
Family / Subfamily:	Toll-like Receptor / not assigned-Toll-like Receptor
Host	TLR1 antibody was produced in Rabbit
Clonality:	Polyclonal
Immunogen Species:	TLR1 antibody was raised against Human
Antigen Type:	Synthetic peptide
Immunogen:	TLR1 antibody was raised against synthetic peptide from human TLR1.
Specificity:	peptide corresponding to 17 amino acids near the center of human TLR1
Epitope:	Internal
Reactivity:	Human
Purification:	Ion exchange chromatography
Presentation:	PBS, 0.02% sodium azide.
Recommended Storage:	Short term 4°C, long term aliquot and store at -20°C, avoid freeze thaw cycles. Store undiluted.
Usage Summary:	Immunohistochemistry: LS-B1415 was validated for use in immunohistochemistry on a panel of 21 formalin-fixed, paraffin-embedded (FFPE) human tissues after heat induced antigen retrieval in pH 6.0 citrate buffer. After incubation with the primary antibody, slides were incubated with biotinylated secondary antibody, followed by alkaline phosphatase-streptavidin and chromogen. The stained slides were evaluated by a pathologist to confirm staining specificity. The optimal working concentration for LS-B1415 was determined to be 5 ug/ml.
Uses:	IHC - Paraffin (5 µg/ml), ICC, Western blot (1 - 2 µg/ml) (Optimal dilution to be determined by the researcher)
Size:	50 µg
Concentration:	1 mg/ml

Immunohistochemistry Image:



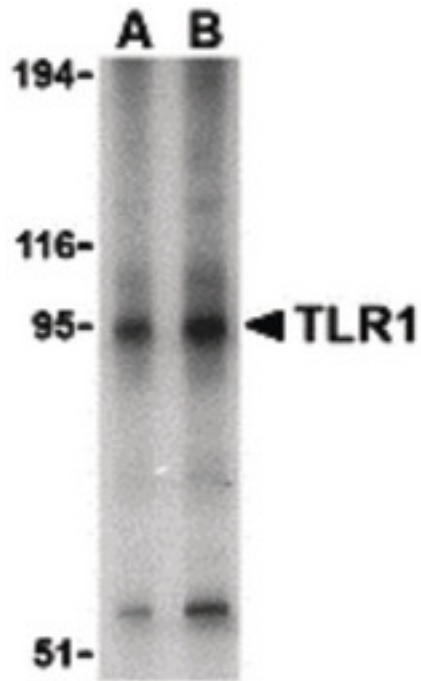
Anti-TLR1 antibody IHC of human small intestine. Immunohistochemistry of formalin-fixed, paraffin-embedded tissue after heat-induced antigen retrieval. Antibody LS-B1415 concentration 5 ug/ml.

Immunocytochemistry Image:



Immunocytochemistry of TLR1 in Daudi with TLR1 antibody at 10 ug/ml.

Western Blot Image:



Western blot of TLR1 in Daudi cell lysate with TLR1 antibody at (A) 1 and (B) 2 ug/ml.

Requested From:

Japan

Laboratory Reagent For In Vitro Research Use Only

Not for resale without prior written consent from LifeSpan BioSciences, Inc.

Created on 9/23/2014

© 2014 LifeSpan BioSciences