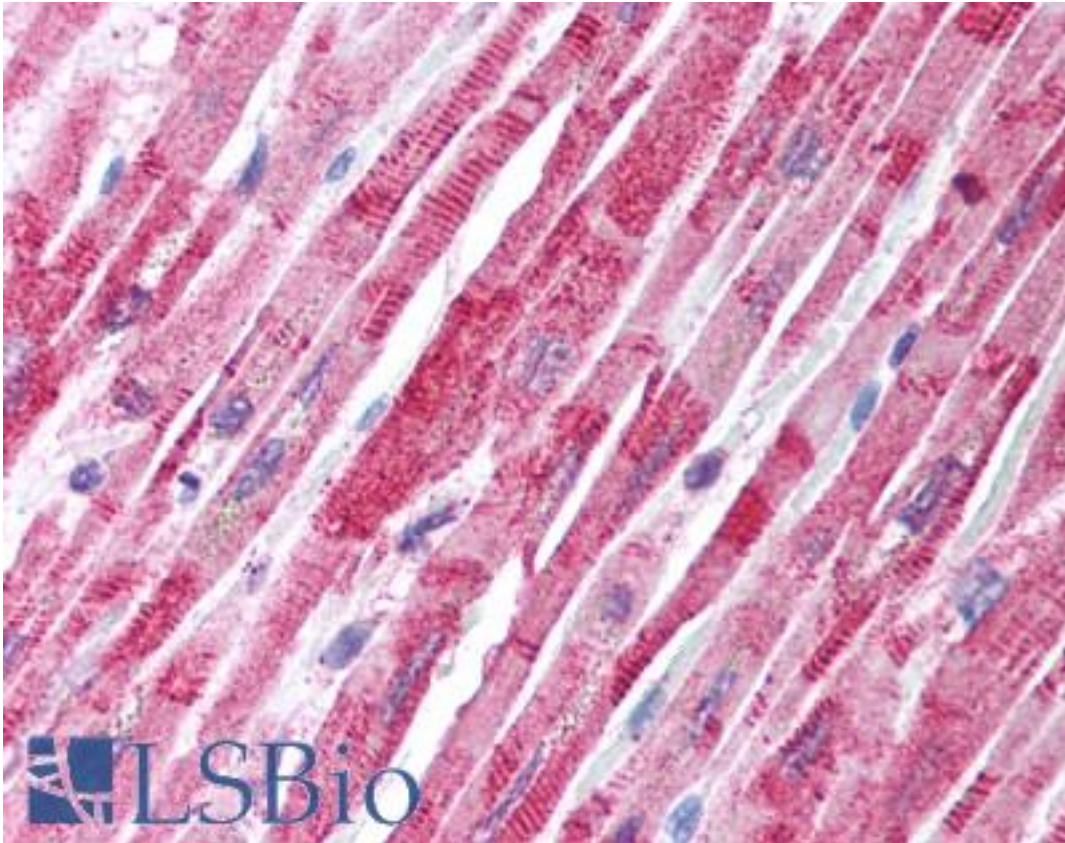


TANK Rabbit anti-Human Polyclonal (N-Terminus) Antibody - LS-B1409 - LSBio

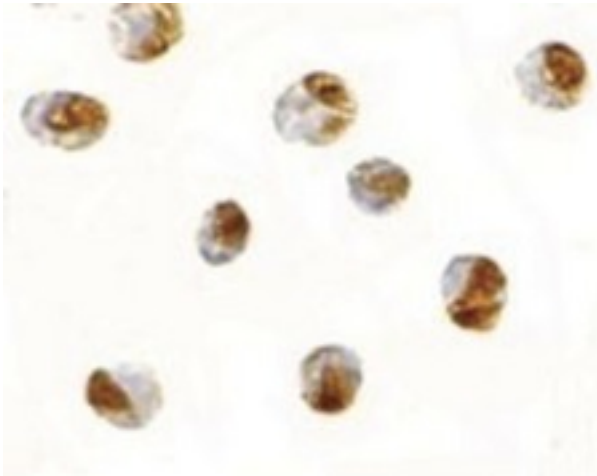
| | |
|-----------------------------|---|
| CatalogID: | LS-B1409 |
| Validation: | This antibody replaces catalog number LS-C19621. It has been validated for use in the following assays: IHC. |
| Target: | TRAF family member-associated NFKB activator (TANK) |
| Synonyms: | TANK Antibody, I-TRAF Antibody, TRAF-interacting protein Antibody, ITRAF Antibody |
| Host | TANK antibody was produced in Rabbit |
| Clonality: | Polyclonal |
| Immunogen Species: | TANK antibody was raised against Human |
| Antigen Type: | Synthetic peptide |
| Immunogen: | TANK antibody was raised against synthetic peptide from human TANK. |
| Specificity: | 14 amino acid peptide from near the amino terminus of human TANK |
| Epitope: | N-Terminus |
| Reactivity: | Human |
| Purification: | Immunoaffinity purified |
| Presentation: | PBS, 0.02% sodium azide. |
| Recommended Storage: | Short term 4°C, long term aliquot and store at -20°C, avoid freeze thaw cycles. Store undiluted. |
| Usage Summary: | Immunohistochemistry: LS-B1409 was validated for use in immunohistochemistry on a panel of 21 formalin-fixed, paraffin-embedded (FFPE) human tissues after heat induced antigen retrieval in pH 6.0 citrate buffer. After incubation with the primary antibody, slides were incubated with biotinylated secondary antibody, followed by alkaline phosphatase-streptavidin and chromogen. The stained slides were evaluated by a pathologist to confirm staining specificity. The optimal working concentration for LS-B1409 was determined to be 2.5 ug/ml. |
| Uses: | IHC - Paraffin (2.5 µg/ml), Western blot (0.5 - 1 µg/ml) (Optimal dilution to be determined by the researcher) |
| Size: | 50 µg |
| Concentration: | 1 mg/ml |

Immunohistochemistry Image:



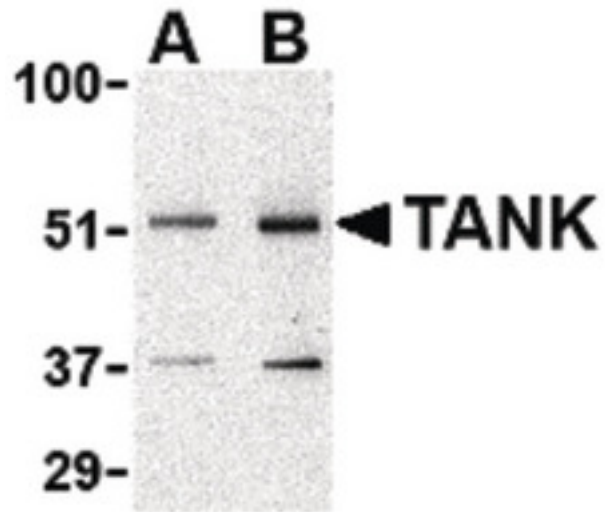
Anti-TANK antibody IHC of human heart. Immunohistochemistry of formalin-fixed, paraffin-embedded tissue after heat-induced antigen retrieval. Antibody LS-B1409 concentration 5 ug/ml.

Immunocytochemistry Image:



Immunocytochemistry of TANK in Daudi cells with TANK antibody at 2.5 ug/ml.

Western Blot Image:



Western blot of TANK in Daudi cell lysate with TANK antibody at (A) 0.5 and (B) 1 ug/ml.

Requested From:

Japan

Laboratory Reagent For In Vitro Research Use Only

Not for resale without prior written consent from LifeSpan BioSciences, Inc.

Created on 9/23/2014

© 2014 LifeSpan BioSciences