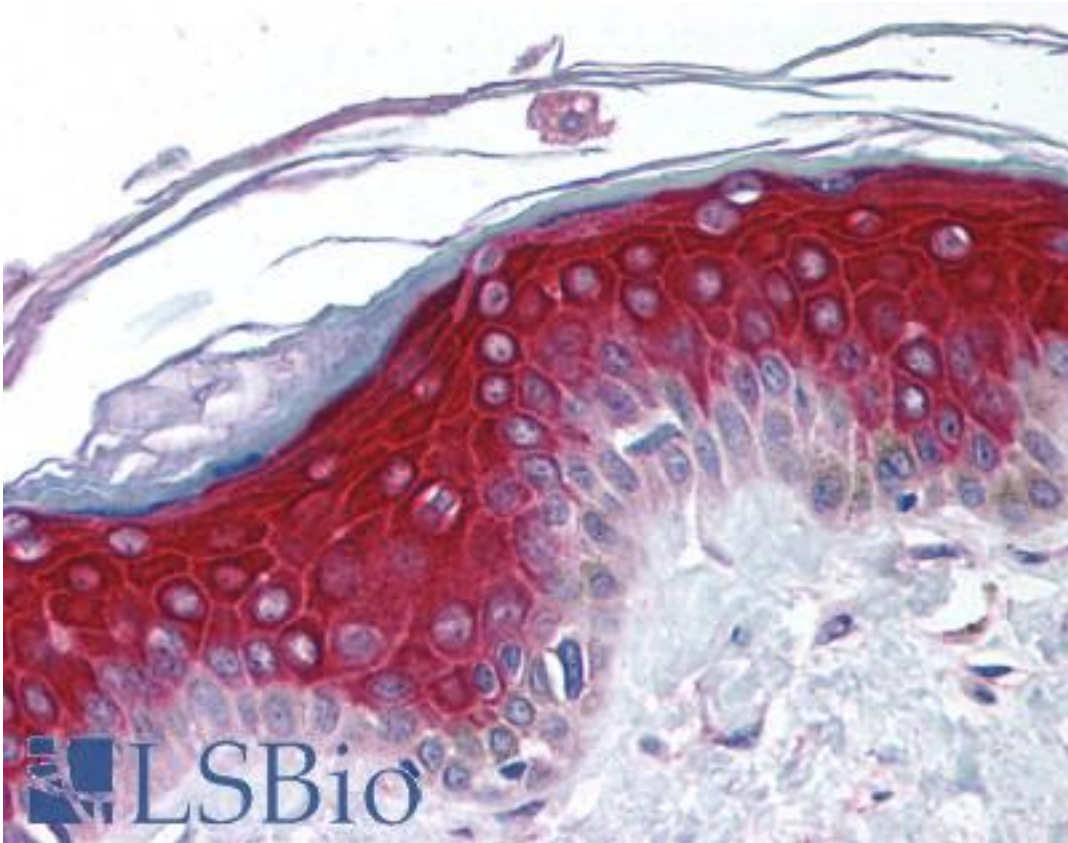


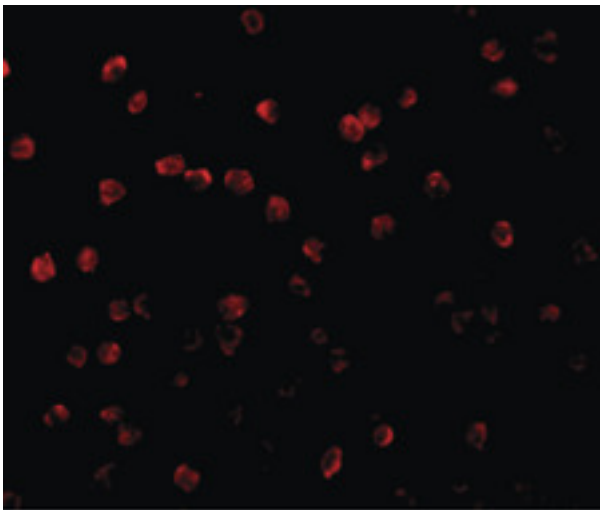
RPS6KA1 / RSK1 Rabbit anti-Human Polyclonal (N-Terminus) Antibody - LS-B1397 - LSBio	
CatalogID:	LS-B1397
Validation:	This antibody replaces catalog number LS-C19507. It has been validated for use in the following assays: IHC.
Target:	ribosomal protein S6 kinase, 90kDa, polypeptide 1 (RPS6KA1)
Synonyms:	RPS6KA1 Antibody, MAPKAPK-1a Antibody, p90RSK Antibody, p90-RSK 1 Antibody, Pp90RSK1 Antibody, Ribosomal S6 kinase 1 Antibody, RSK-1 Antibody, S6K-alpha 1 Antibody, MAPKAP kinase 1a Antibody, MAPKAPK1A Antibody, p90 s6 kinase Antibody, p90S6K Antibody, RSK Antibody, RSK1 Antibody, HU-1 Antibody, p90RSK1 Antibody, S6K-alpha-1 Antibody
Family / Subfamily:	Protein Kinase / RSK
Host	RPS6KA1 antibody was produced in Rabbit
Clonality:	Polyclonal
Immunogen Species:	RPS6KA1 / RSK1 antibody was raised against Human
Antigen Type:	Synthetic peptide
Immunogen:	RPS6KA1 / RSK1 antibody was raised against synthetic peptide from human RPS6KA1 / RSK1.
Specificity:	16 amino acid peptide from near the amino-terminus of human RPS6K1
Epitope:	N-Terminus
Reactivity:	Human
Purification:	Immunoaffinity purified
Presentation:	PBS, 0.02% sodium azide.
Recommended Storage:	Short term 4°C, long term aliquot and store at -20°C, avoid freeze thaw cycles. Store undiluted.
Usage Summary:	Immunohistochemistry: LS-B1397 was validated for use in immunohistochemistry on a panel of 21 formalin-fixed, paraffin-embedded (FFPE) human tissues after heat induced antigen retrieval in pH 6.0 citrate buffer. After incubation with the primary antibody, slides were incubated with biotinylated secondary antibody, followed by alkaline phosphatase-streptavidin and chromogen. The stained slides were evaluated by a pathologist to confirm staining specificity. The optimal working concentration for LS-B1397 was determined to be 5 ug/ml.
Uses:	IHC - Paraffin (5 µg/ml), ICC, Western blot (5 - 10 µg/ml) (Optimal dilution to be determined by the researcher)
Size:	50 µg
Concentration:	1 mg/ml

Immunohistochemistry Image:



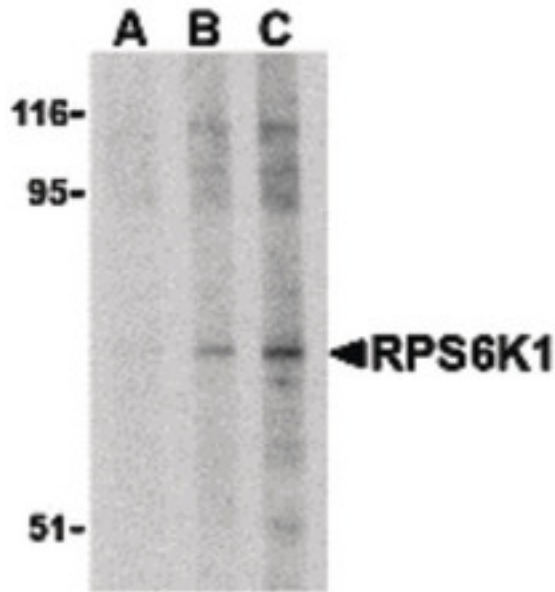
Anti-RPS6KA1 / RSK1 antibody IHC of human skin. Immunohistochemistry of formalin-fixed, paraffin-embedded tissue after heat-induced antigen retrieval. Antibody LS-B1397 concentration 5 ug/ml.

Immunofluorescence Image:



Immunofluorescence of RP S6 Kinase in Jurkat cells with RP S6 Kinase antibody at 20 ug/ml.

Western Blot Image:



Western blot of RPS6K1 in Jurkat cell lysate with RPS6K1 antibody at (A) 2.5, (B) 5 and (C) 10 ug/ml.

Requested From:

Japan

Laboratory Reagent For In Vitro Research Use Only

Not for resale without prior written consent from LifeSpan BioSciences, Inc.

Created on 9/23/2014

© 2014 LifeSpan BioSciences