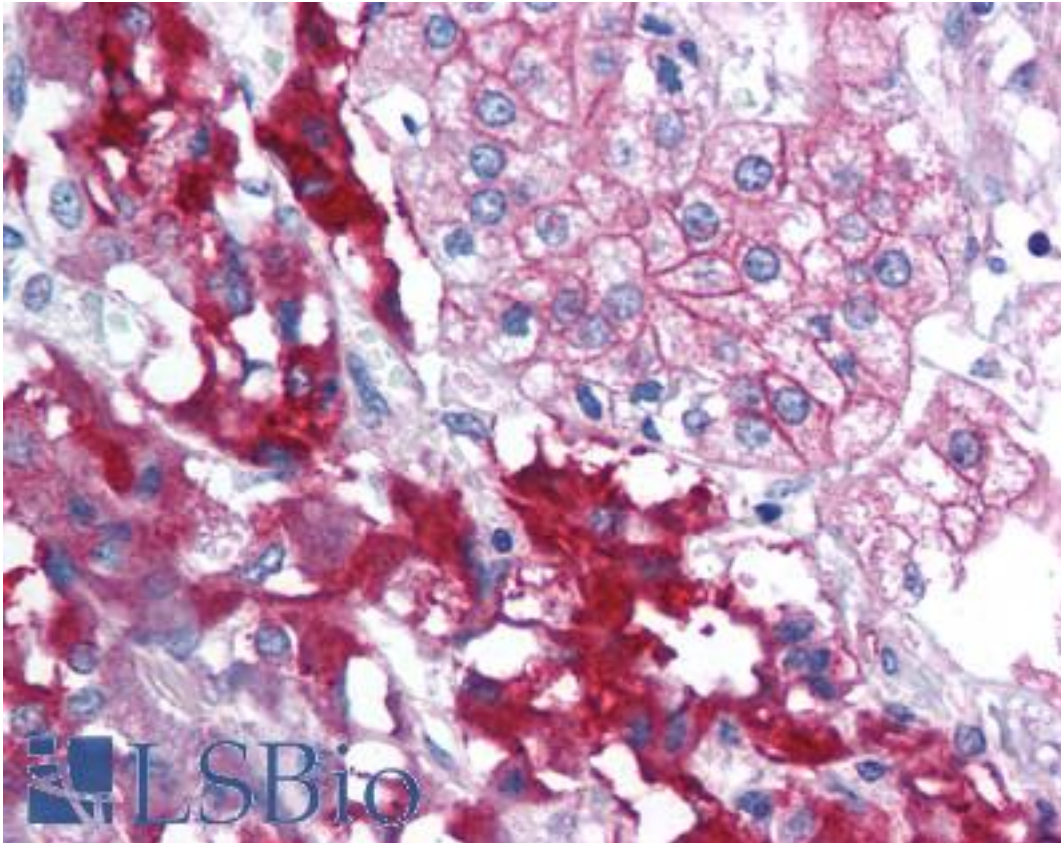


RPAIN Rabbit anti-Human Polyclonal (C-Terminus) Antibody - LS-B1396 - LSBio

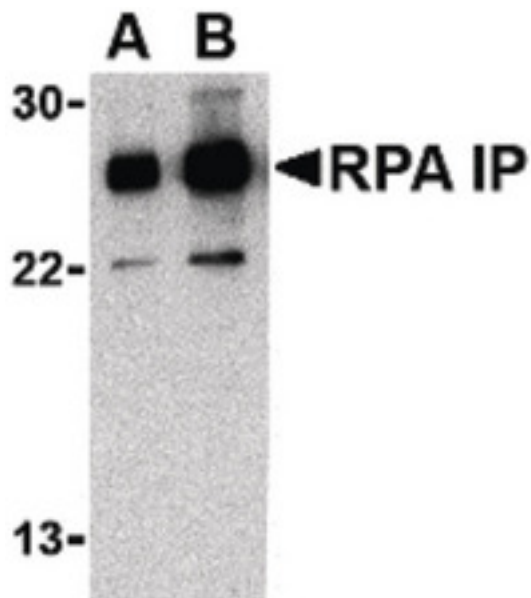
CatalogID:	LS-B1396
Validation:	This antibody replaces catalog number LS-C19666. It has been validated for use in the following assays: IHC.
Target:	RPA interacting protein (RPAIN)
Synonyms:	RPAIN Antibody, HRIP Antibody, RPA interacting protein Antibody, RIP Antibody, RAP interaction protein Antibody, RPA-interacting protein Antibody, Nuclear transporter Antibody
Family / Subfamily:	Transporter
Host	RPAIN antibody was produced in Rabbit
Clonality:	Polyclonal
Immunogen Species:	RPAIN antibody was raised against Human
Antigen Type:	Synthetic peptide
Immunogen:	RPAIN antibody was raised against synthetic peptide from human RPAIN.
Specificity:	17 amino acid peptide from near the carboxy terminus of human RPA IP.
Epitope:	C-Terminus
Reactivity:	Human, Mouse, Rat
Purification:	Immunoaffinity purified
Presentation:	PBS, 0.02% sodium azide.
Recommended Storage:	Short term 4°C, long term aliquot and store at -20°C, avoid freeze thaw cycles. Store undiluted.
Usage Summary:	Immunohistochemistry: LS-B1396 was validated for use in immunohistochemistry on a panel of 21 formalin-fixed, paraffin-embedded (FFPE) human tissues after heat induced antigen retrieval in pH 6.0 citrate buffer. After incubation with the primary antibody, slides were incubated with biotinylated secondary antibody, followed by alkaline phosphatase-streptavidin and chromogen. The stained slides were evaluated by a pathologist to confirm staining specificity. The optimal working concentration for LS-B1396 was determined to be 5 ug/ml.
Uses:	IHC - Paraffin (5 µg/ml), Western blot (0.5 - 1 µg/ml) (Optimal dilution to be determined by the researcher)
Size:	50 µg
Concentration:	1 mg/ml

Immunohistochemistry Image:



Anti-RPAIN antibody IHC of human adrenal. Immunohistochemistry of formalin-fixed, paraffin-embedded tissue after heat-induced antigen retrieval. Antibody LS-B1396 concentration 5 ug/ml.

Western Blot Image:



Western blot of RPA Interacting Protein in Jurkat cell lysate with RPA Interacting Protein antibody at (A) 0.5 and (B) 1 ug/ml.

Requested From:	Japan
Laboratory Reagent For In Vitro Research Use Only	
Not for resale without prior written consent from LifeSpan BioSciences, Inc.	
Created on 9/23/2014	
© 2014 LifeSpan BioSciences	