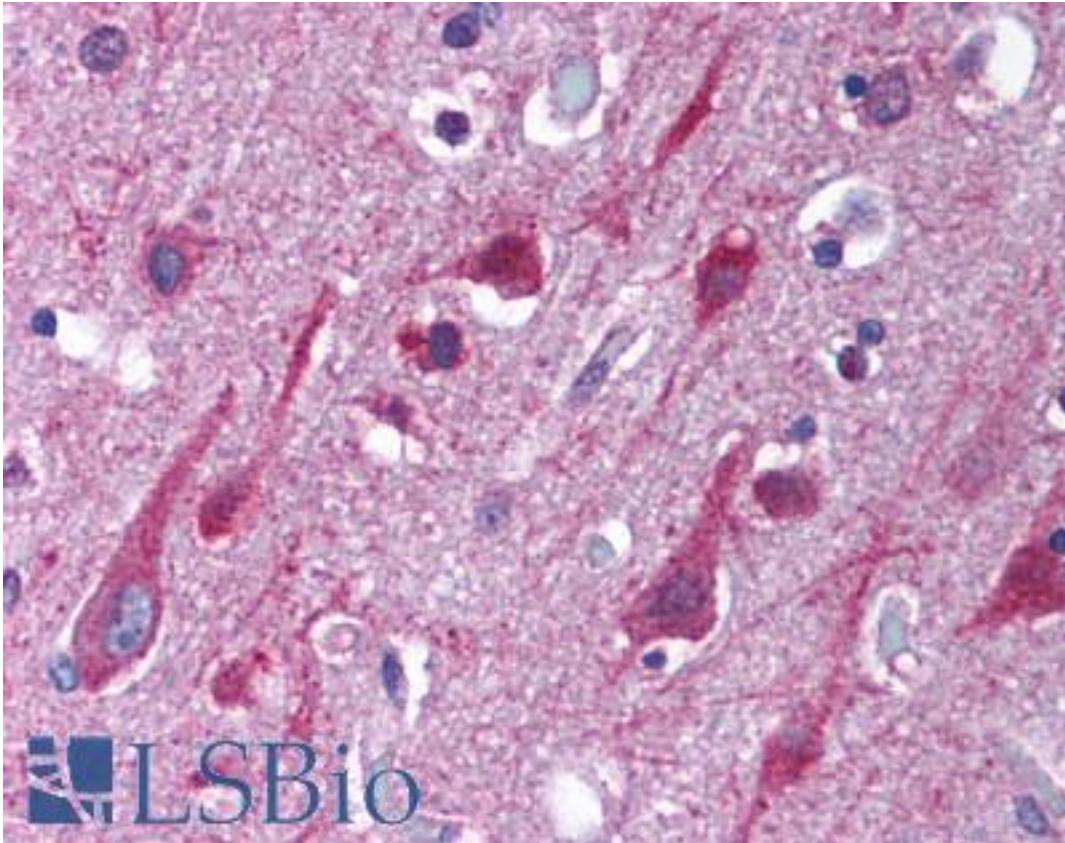


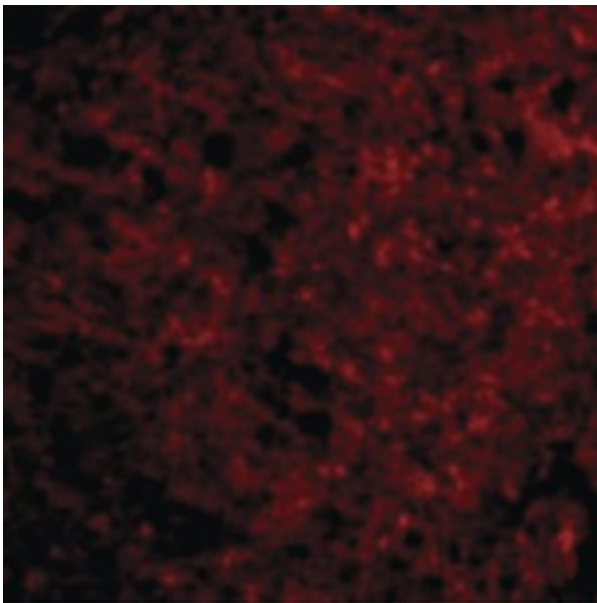
PSEN1 / Presenilin 1 Rabbit anti-Human Polyclonal (C-Terminus) Antibody - LS-B1390 - LSBio	
CatalogID:	LS-B1390
Validation:	This antibody replaces catalog number LS-C34695. It has been validated for use in the following assays: IHC.
Target:	presenilin 1 (PSEN1)
Synonyms:	PSEN1 Antibody, AD3 Antibody, Alzheimer disease 3 Antibody, FAD Antibody, Protein S182 Antibody, PS1 Antibody, S182 Antibody, PS-1 Antibody, PSNL1 Antibody, Presenilin 1 Antibody, Presenilin-1 Antibody
Family / Subfamily:	protease / Aspartic A22A
Host	PSEN1 antibody was produced in Rabbit
Clonality:	Polyclonal
Isotype:	IgG
Immunogen Species:	PSEN1 / Presenilin 1 antibody was raised against Human
Antigen Type:	Synthetic peptide
Immunogen:	PSEN1 / Presenilin 1 antibody was raised against synthetic peptide from human PSEN1 / Presenilin 1.
Specificity:	a 23 amino acid peptide from near the carboxy terminus of human presenilin1
Epitope:	C-Terminus
Reactivity:	Human, Mouse, Rat
Purification:	Immunoaffinity purified
Presentation:	PBS, 0.02% sodium azide.
Recommended Storage:	Short term 4°C, long term aliquot and store at -20°C, avoid freeze thaw cycles. Store undiluted.
Usage Summary:	Immunohistochemistry: LS-B1390 was validated for use in immunohistochemistry on a panel of 21 formalin-fixed, paraffin-embedded (FFPE) human tissues after heat induced antigen retrieval in pH 6.0 citrate buffer. After incubation with the primary antibody, slides were incubated with biotinylated secondary antibody, followed by alkaline phosphatase-streptavidin and chromogen. The stained slides were evaluated by a pathologist to confirm staining specificity. The optimal working concentration for LS-B1390 was determined to be 5 ug/ml.
Uses:	IHC - Paraffin (5 µg/ml), Western blot (0.5 - 2 µg/ml) (Optimal dilution to be determined by the researcher)
Size:	50 µg
Concentration:	1 mg/ml

Immunohistochemistry Image:



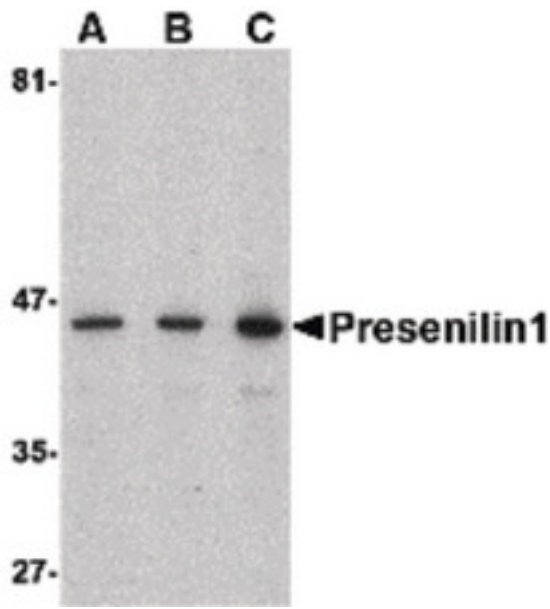
Anti-PSEN1 / Presenilin 1 antibody IHC of human brain, cortex. Immunohistochemistry of formalin-fixed, paraffin-embedded tissue after heat-induced antigen retrieval. Antibody LS-B1390 concentration 5 ug/ml.

Immunofluorescence Image:



Immunofluorescence of Presenilin1 in Human Brain cells with Presenilin1 antibody at 20 ug/ml.

Western Blot Image:



Western blot of presenilin1 in human brain lysate with presenilin1 antibody at (A) 0.5, (B) 1, and (C) 2 ug/ml.

Requested From:

Japan

Laboratory Reagent For In Vitro Research Use Only

Not for resale without prior written consent from LifeSpan BioSciences, Inc.

Created on 9/23/2014

© 2014 LifeSpan BioSciences