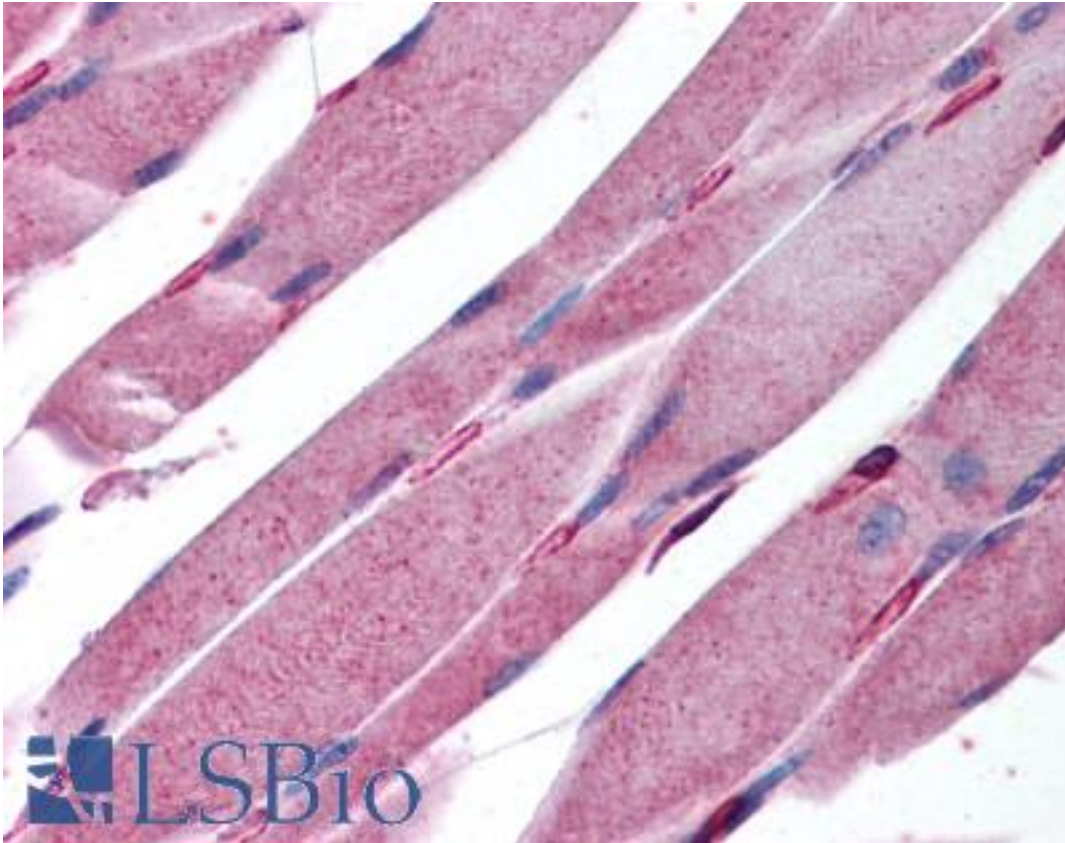


KALRN / KALIRIN Rabbit anti-Human Polyclonal (aa1591-1605) Antibody - LS-B137 - LSBio	
CatalogID:	LS-B137
Validation:	This antibody replaces catalog number LS-C3007. It has been validated for use in the following assays: IHC.
Target:	kalirin, RhoGEF kinase (KALRN)
Synonyms:	KALRN Antibody, ARHGEF24 Antibody, DUO Antibody, CHDS5 Antibody, DUET Antibody, HAPIP Antibody, Kalirin, RhoGEF kinase Antibody, Kalirin Antibody, Protein Duo Antibody, TRAD Antibody
Family / Subfamily:	Protein Kinase / TRIO/TRAD
Host	KALRN antibody was produced in Rabbit
Clonality:	Polyclonal
Immunogen Species:	KALRN / KALIRIN antibody was raised against Human
Antigen Type:	Synthetic peptide
Immunogen:	KALRN / KALIRIN antibody was raised against synthetic peptide from human KALRN.
Specificity:	A synthetic peptide corresponding to amino acids 1591-1605 (KEP LQL PKT PAK QRN) of human HAPIP/KALRN protein.
Epitope:	aa1591-1605
Reactivity:	Human
Purification:	Protein G purified
Presentation:	PBS, pH 7.4, 0.09% sodium azide.
Recommended Storage:	Long term: -20°C; Short term: +4°C. Avoid repeat freeze-thaw cycles.
Usage Summary:	Immunohistochemistry: LS-B137 was validated for use in immunohistochemistry on a panel of 21 formalin-fixed, paraffin-embedded (FFPE) human tissues after heat induced antigen retrieval in pH 6.0 citrate buffer. After incubation with the primary antibody, slides were incubated with biotinylated secondary antibody, followed by alkaline phosphatase-streptavidin and chromogen. The stained slides were evaluated by a pathologist to confirm staining specificity. The optimal working concentration for LS-B137 was determined to be 5 ug/ml.
Uses:	IHC - Paraffin (5 µg/ml), ELISA (1:000 - 1:1000) (Optimal dilution to be determined by the researcher)
Size:	50 µg
Concentration:	1 mg/ml

Immunohistochemistry Image:



Anti-KALRN antibody IHC of human skeletal muscle. Immunohistochemistry of formalin-fixed, paraffin-embedded tissue after heat-induced antigen retrieval. Antibody LS-B137 concentration 5 ug/ml.

Requested From:

Japan

Laboratory Reagent For In Vitro Research Use Only

Not for resale without prior written consent from LifeSpan BioSciences, Inc.

Created on 9/23/2014

© 2014 LifeSpan BioSciences