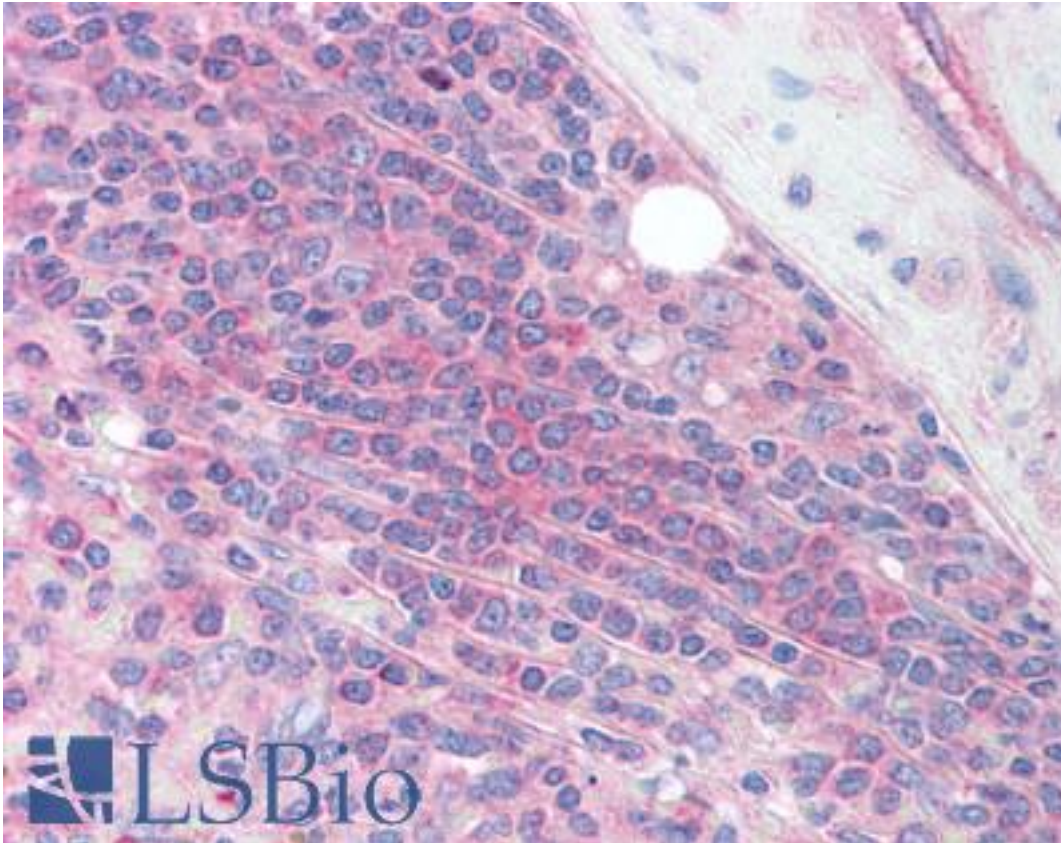


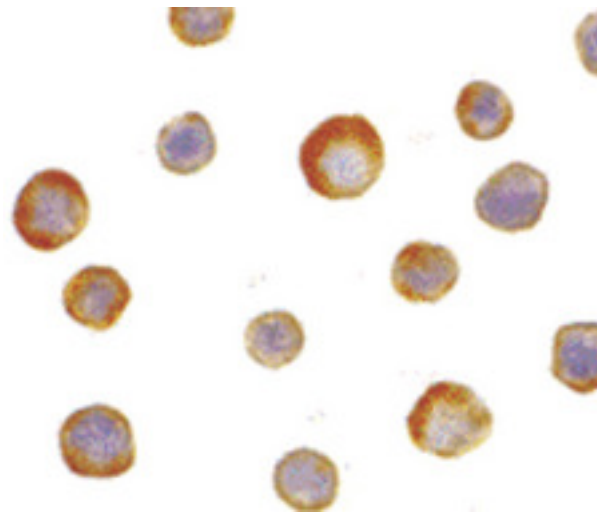
IKBKG / NEMO / IKK Gamma Rabbit anti-Human Polyclonal (aa400-416) Antibody - LS-B1363 - LSBio	
<b>CatalogID:</b>	LS-B1363
<b>Validation:</b>	This antibody replaces catalog number LS-C387. It has been validated for use in the following assays: IHC.
<b>Target:</b>	inhibitor of kappa light polypeptide gene enhancer in B-cells, kinase gamma (IKBKG)
<b>Synonyms:</b>	IKBKG Antibody, AMCBX1 Antibody, FIP3 Antibody, Fip3p Antibody, IkappaB kinase gamma Antibody, IKKgamma Antibody, IKK-gamma Antibody, NEMO Antibody, NF-kappa-B essential modifier Antibody, I-kappa-B kinase gamma-subunit Antibody, I-kappa-B kinase subunit gamma Antibody, Ikb kinase gamma subunit Antibody, IKKAP1 Antibody, Incontinentia pigmenti Antibody, IP2 Antibody, IPD2 Antibody, NF-kappa-B essential modulator Antibody, ZC2HC9 Antibody, FIP-3 Antibody, Ikb kinase subunit gamma Antibody, IKKG Antibody, IP1 Antibody, NFkappaB essential modulator Antibody
<b>Family / Subfamily:</b>	Protein Kinase Non Catalytic / IKAPPAB
<b>Host</b>	IKBKG antibody was produced in Rabbit
<b>Clonality:</b>	Polyclonal
<b>Immunogen Species:</b>	IKBKG / NEMO / IKK Gamma antibody was raised against Human
<b>Antigen Type:</b>	Synthetic peptide
<b>Immunogen:</b>	IKBKG / NEMO / IKK Gamma antibody was raised against a peptide corresponding to amino acids 400 to 416 of human IKK gamma, which are identical to those of mouse homologue.
<b>Specificity:</b>	peptide corresponding to amino acids 400 to 416 of human IKKg, which are identical to those of mouse homologue
<b>Epitope:</b>	aa400-416
<b>Reactivity:</b>	Human, Mouse, Rat
<b>Purification:</b>	Immunoaffinity purified
<b>Presentation:</b>	PBS, 0.02% sodium azide.
<b>Recommended Storage:</b>	Short term 4°C, long term aliquot and store at -20°C, avoid freeze thaw cycles. Store undiluted.
<b>Usage Summary:</b>	Immunohistochemistry: LS-B1363 was validated for use in immunohistochemistry on a panel of 21 formalin-fixed, paraffin-embedded (FFPE) human tissues after heat induced antigen retrieval in pH 6.0 citrate buffer. After incubation with the primary antibody, slides were incubated with biotinylated secondary antibody, followed by alkaline phosphatase-streptavidin and chromogen. The stained slides were evaluated by a pathologist to confirm staining specificity. The optimal working concentration for LS-B1363 was determined to be 5 ug/ml.
<b>Uses:</b>	IHC - Paraffin (5 µg/ml), ICC, Western blot (0.5 - 1 µg/ml) (Optimal dilution to be determined by the researcher)
<b>Size:</b>	50 µg
<b>Concentration:</b>	1 mg/ml

**Immunohistochemistry Image:**



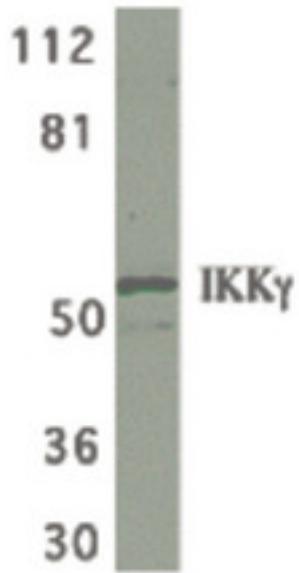
Anti-IKBKG / IKK Gamma antibody IHC of human spleen. Immunohistochemistry of formalin-fixed, paraffin-embedded tissue after heat-induced antigen retrieval. Antibody LS-B1363 concentration 5 ug/ml.

**Immunocytochemistry Image:**



Immunocytochemistry of IKK gamma in HeLa cells with IKK gamma antibody at 5 ug/ml.

**Western Blot Image:**



Western blot of IKK gamma in HeLa whole cell lysate with IKK gamma antibody at 1 ug/ml.

**Requested From:**

Japan

Laboratory Reagent For In Vitro Research Use Only

Not for resale without prior written consent from LifeSpan BioSciences, Inc.

Created on 9/23/2014

© 2014 LifeSpan BioSciences