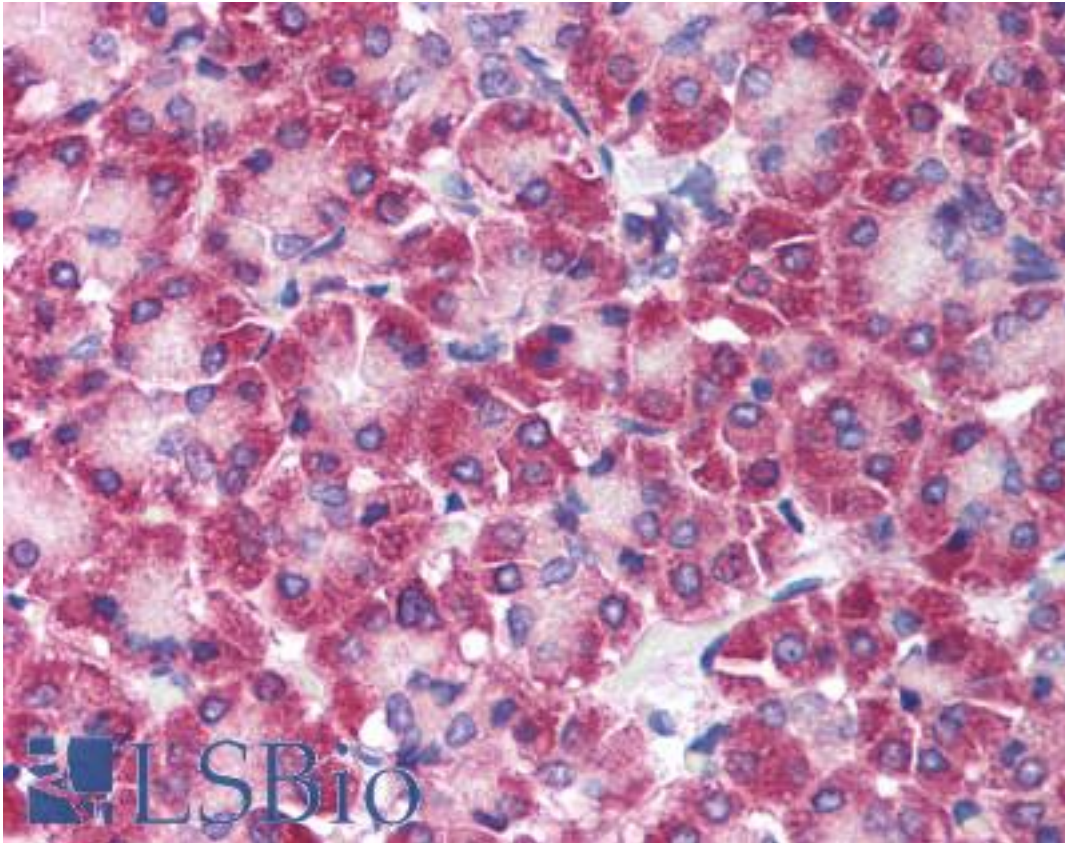


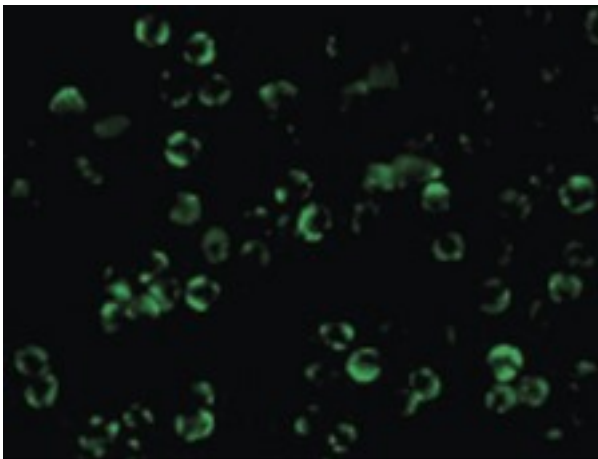
IKBKB / IKK2 / IKK Beta Rabbit anti-Human Polyclonal (C-Terminus) Antibody - LS-B1362 - LSBio	
CatalogID:	LS-B1362
Validation:	This antibody replaces catalog number LS-C306. It has been validated for use in the following assays: IHC.
Target:	inhibitor of kappa light polypeptide gene enhancer in B-cells, kinase beta (IKBKB)
Synonyms:	IKBKB Antibody, Ikk 2 Antibody, IKK-B Antibody, IKK2 Antibody, IKKbeta Antibody, NFKBIKB Antibody, I-kappa-B kinase 2 Antibody, IKKB Antibody, I-kappa-B-kinase beta Antibody, Ikb kinase-beta Antibody, IKK Beta Antibody, IKK-beta Antibody
Family / Subfamily:	Protein Kinase / IKAPPAB
Host	IKBKB antibody was produced in Rabbit
Clonality:	Polyclonal
Immunogen Species:	IKBKB / IKK2 / IKK Beta antibody was raised against Human
Antigen Type:	Synthetic peptide
Immunogen:	IKBKB / IKK2 / IKK Beta antibody was raised against a peptide corresponding to amino acids near the carboxy-terminus of human IKK beta (Genbank accession NoO14920), which differs from corresponding murine sequence by one amino acid.
Specificity:	peptide corresponding to amino acids near the carboxy-terminus of human IKKb (Genbank accession NoO14920), which differs from corresponding murine sequence by one amino acid
Epitope:	C-Terminus
Reactivity:	Human
Purification:	Immunoaffinity purified
Presentation:	PBS, 0.02% sodium azide.
Recommended Storage:	Short term 4°C, long term aliquot and store at -20°C, avoid freeze thaw cycles. Store undiluted.
Usage Summary:	Immunohistochemistry: LS-B1362 was validated for use in immunohistochemistry on a panel of 21 formalin-fixed, paraffin-embedded (FFPE) human tissues after heat induced antigen retrieval in pH 6.0 citrate buffer. After incubation with the primary antibody, slides were incubated with biotinylated secondary antibody, followed by alkaline phosphatase-streptavidin and chromogen. The stained slides were evaluated by a pathologist to confirm staining specificity. The optimal working concentration for LS-B1362 was determined to be 5 ug/ml.
Uses:	IHC - Paraffin (5 µg/ml), ICC, Western blot (1:500) (Optimal dilution to be determined by the researcher)
Size:	50 µg
Concentration:	1 mg/ml

Immunohistochemistry Image:



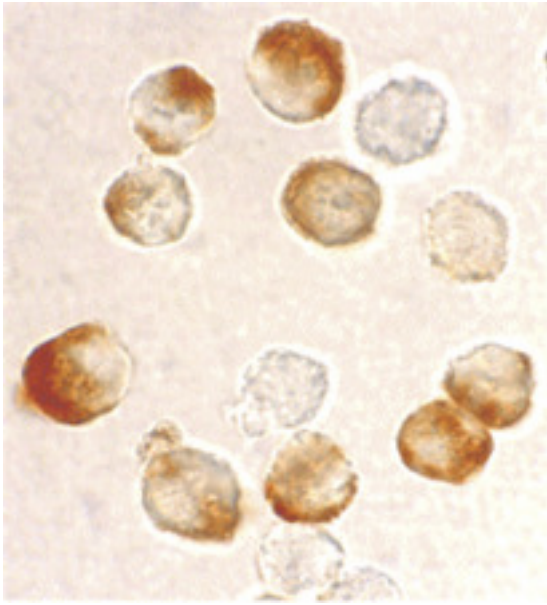
Anti-IKBKB / IKK Beta antibody IHC of human pancreas. Immunohistochemistry of formalin-fixed, paraffin-embedded tissue after heat-induced antigen retrieval. Antibody LS-B1362 concentration 5 ug/ml.

Immunofluorescence Image:



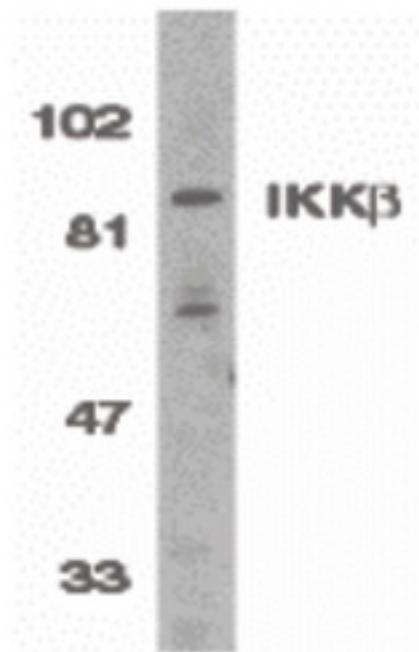
Immunofluorescence of IKK beta in HeLa cells with IKK beta antibody at 10 ug/ml.

Immunocytochemistry Image:



Immunocytochemistry staining of HeLa cells using IKK beta antibody at 10 ug/ml.

Western Blot Image:



Western blot of IKK beta in Jurkat whole cell lysate with IKK beta antibody (C3) at 1:500 dilution.

Requested From:

Japan

Laboratory Reagent For In Vitro Research Use Only

Not for resale without prior written consent from LifeSpan BioSciences, Inc.

Created on 9/23/2014

© 2014 LifeSpan BioSciences