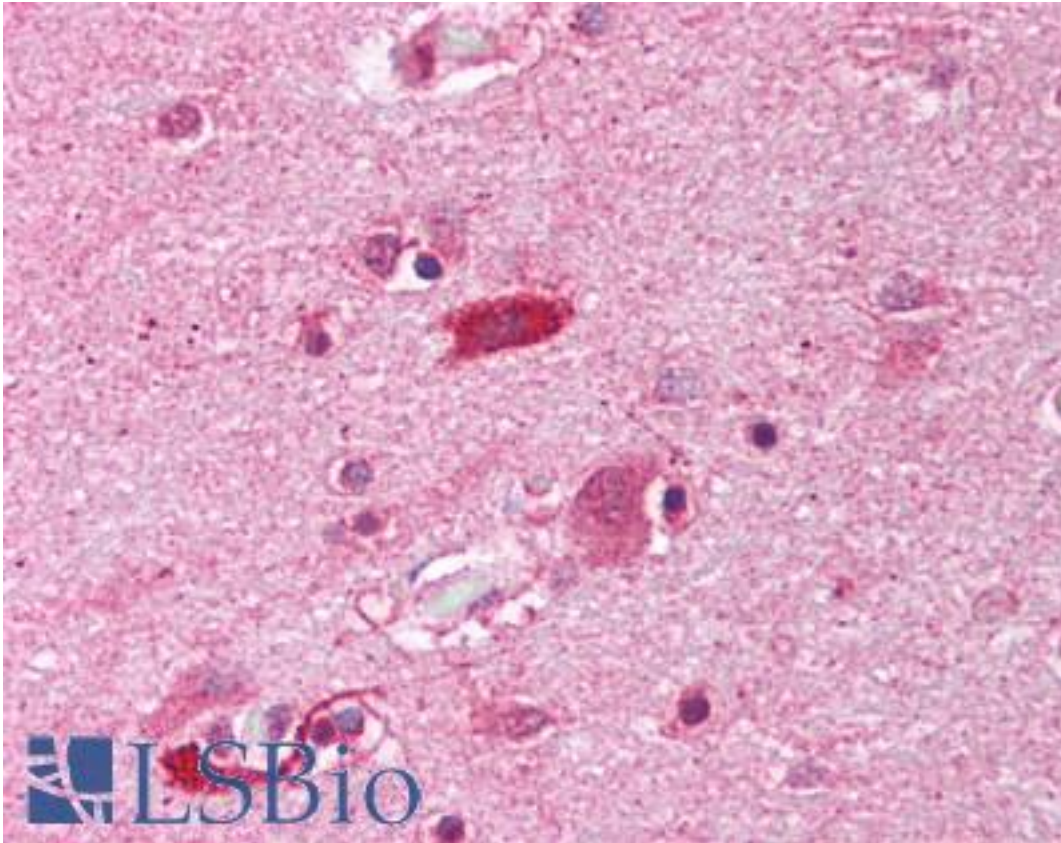


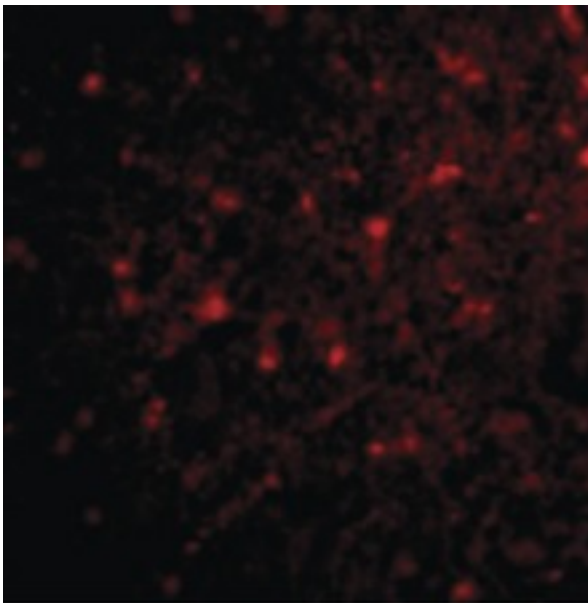
HAP1 Rabbit anti-Human Polyclonal (Internal) Antibody - LS-B1357 - LSBio	
<b>CatalogID:</b>	LS-B1357
<b>Validation:</b>	This antibody replaces catalog number LS-C34696. It has been validated for use in the following assays: IHC.
<b>Target:</b>	huntingtin-associated protein 1 (HAP1)
<b>Synonyms:</b>	HAP1 Antibody, HLP Antibody, HAP2 Antibody, HHLP1 Antibody, HLP1 Antibody, HIP5 Antibody, Neuroan 1 Antibody, HAP-1 Antibody
<b>Host</b>	HAP1 antibody was produced in Rabbit
<b>Clonality:</b>	Polyclonal
<b>Isotype:</b>	IgG
<b>Immunogen Species:</b>	HAP1 antibody was raised against Human
<b>Antigen Type:</b>	Synthetic peptide
<b>Immunogen:</b>	HAP1 antibody was raised against a 19 amino acid peptide from near the center of human HAP1.
<b>Specificity:</b>	a 19 amino acid peptide from near the center of human HAP1
<b>Epitope:</b>	Internal
<b>Reactivity:</b>	Human, Mouse, Rat
<b>Purification:</b>	Immunoaffinity purified
<b>Presentation:</b>	PBS, 0.02% sodium azide.
<b>Recommended Storage:</b>	Short term 4°C, long term aliquot and store at -20°C, avoid freeze thaw cycles. Store undiluted.
<b>Usage Summary:</b>	Immunohistochemistry: LS-B1357 was validated for use in immunohistochemistry on a panel of 21 formalin-fixed, paraffin-embedded (FFPE) human tissues after heat induced antigen retrieval in pH 6.0 citrate buffer. After incubation with the primary antibody, slides were incubated with biotinylated secondary antibody, followed by alkaline phosphatase-streptavidin and chromogen. The stained slides were evaluated by a pathologist to confirm staining specificity. The optimal working concentration for LS-B1357 was determined to be 5 ug/ml.
<b>Uses:</b>	IHC - Paraffin (5 µg/ml), Western blot (0.5 - 1 µg/ml) (Optimal dilution to be determined by the researcher)
<b>Size:</b>	50 µg
<b>Concentration:</b>	1 mg/ml

**Immunohistochemistry Image:**



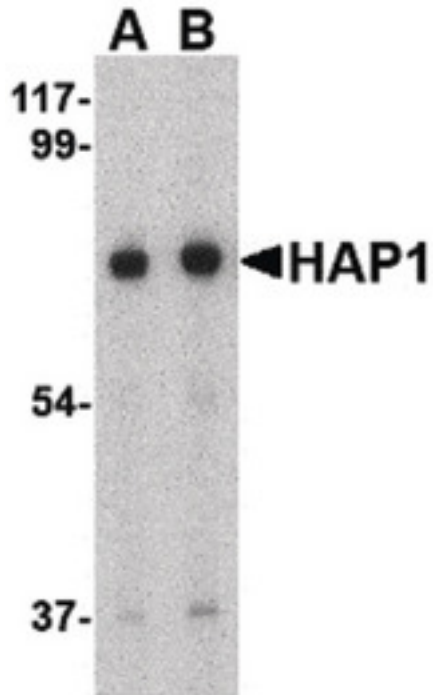
Anti-HAP1 antibody IHC of human brain, cortex. Immunohistochemistry of formalin-fixed, paraffin-embedded tissue after heat-induced antigen retrieval. Antibody LS-B1357 concentration 5 ug/ml.

**Immunofluorescence Image:**



Immunofluorescence of HAP1 in Human Brain cells with HAP1 antibody at 20 ug/ml.

**Western Blot Image:**



Western blot of HAP1 in mouse brain tissue lysate with HAP1 antibody at (A) 0.5 and (B) 1 ug/ml.

**Requested From:**

Japan

Laboratory Reagent For In Vitro Research Use Only

Not for resale without prior written consent from LifeSpan BioSciences, Inc.

Created on 9/23/2014

© 2014 LifeSpan BioSciences