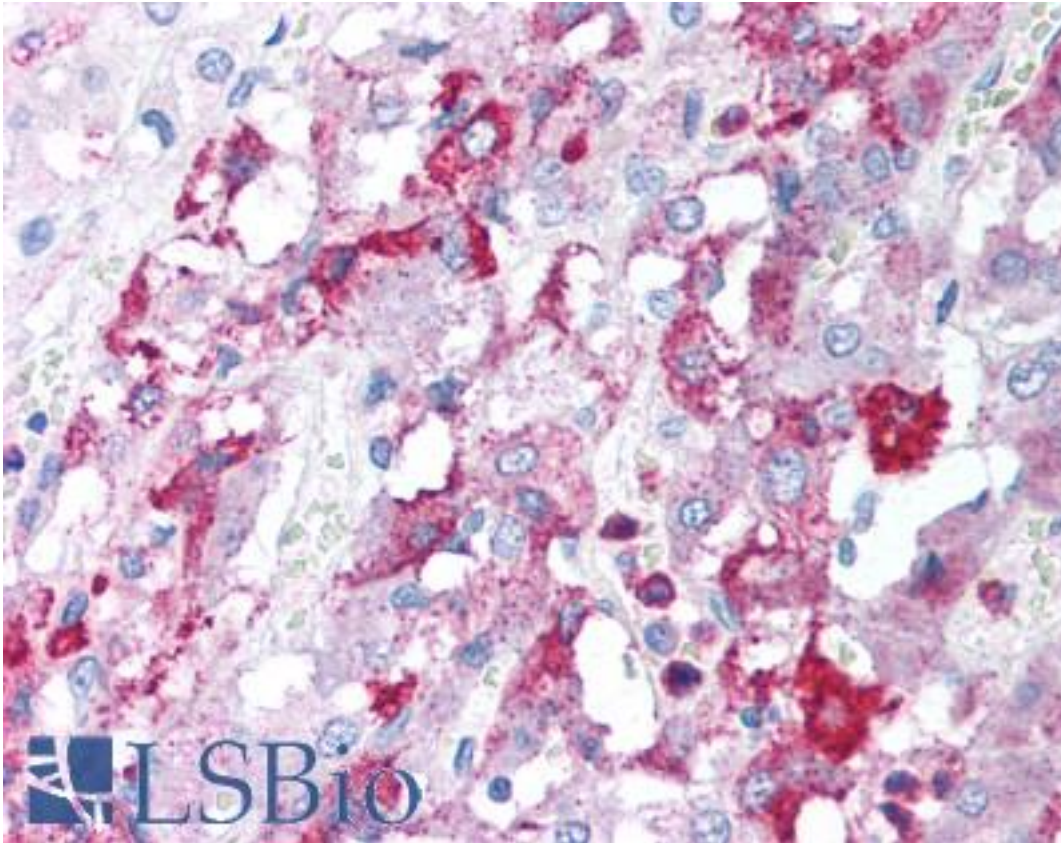


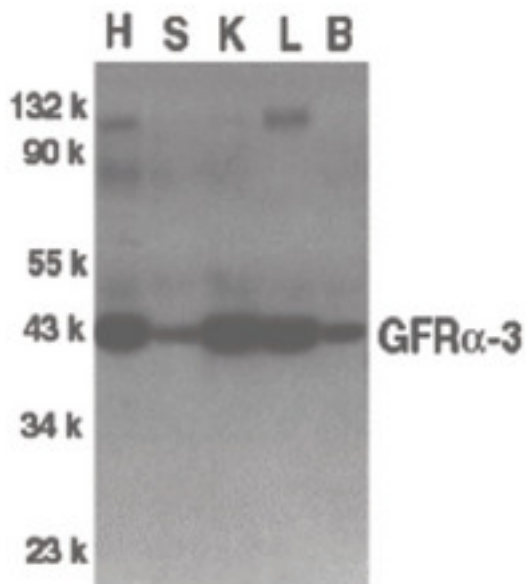
GFRA3 Rabbit anti-Mouse Polyclonal Antibody - LS-B1355 - LSBio	
CatalogID:	LS-B1355
Validation:	This antibody replaces catalog number LS-C266. It has been validated for use in the following assays: IHC.
Target:	GDNF family receptor alpha 3 (GFRA3)
Synonyms:	GFRA3 Antibody, GDNF receptor alpha-3 Antibody, GDNFR-alpha-3 Antibody, GFR-alpha-3 Antibody, GDNF family receptor alpha 3 Antibody, GPI-linked receptor Antibody, GDNF family receptor alpha-3 Antibody, GFRa-3 Antibody
Family / Subfamily:	GDNF Receptor / Not assigned-Other
Host	GFRA3 antibody was produced in Rabbit
Clonality:	Polyclonal
Immunogen Species:	GFRA3 antibody was raised against Mouse
Antigen Type:	Synthetic peptide
Immunogen:	GFRA3 antibody was raised against a peptide corresponding to amino acids from 347 to 360 of murine GFR alpha 3.
Specificity:	peptide corresponding to amino acids from 347 to 360 of murine GFRa-3
Reactivity:	Mouse, Human, Rat
Purification:	Ion exchange chromatography
Presentation:	PBS, 0.02% sodium azide.
Recommended Storage:	Short term 4°C, long term aliquot and store at -20°C, avoid freeze thaw cycles. Store undiluted.
Usage Summary:	Immunohistochemistry: LS-B1355 was validated for use in immunohistochemistry on a panel of 21 formalin-fixed, paraffin-embedded (FFPE) human tissues after heat induced antigen retrieval in pH 6.0 citrate buffer. After incubation with the primary antibody, slides were incubated with biotinylated secondary antibody, followed by alkaline phosphatase-streptavidin and chromogen. The stained slides were evaluated by a pathologist to confirm staining specificity. The optimal working concentration for LS-B1355 was determined to be 5 ug/ml.
Uses:	IHC - Paraffin (5 µg/ml), Western blot (1:500 - 1:1000) (Optimal dilution to be determined by the researcher)
Size:	50 µg
Concentration:	1 mg/ml

Immunohistochemistry Image:



Anti-GFRA3 antibody IHC of human adrenal. Immunohistochemistry of formalin-fixed, paraffin-embedded tissue after heat-induced antigen retrieval. Antibody LS-B1355 concentration 5 ug/ml.

Western Blot Image:



Western blot of GFR alpha 3 in crude cell membrane fractions of mouse heart (H), spleen (S), kidney (K), liver (L), and brain (B), respectively, with GFR alpha 3 antibody at 1:500 dilution.

Requested From:	Japan
Laboratory Reagent For In Vitro Research Use Only	
Not for resale without prior written consent from LifeSpan BioSciences, Inc.	
Created on 9/23/2014	
© 2014 LifeSpan BioSciences	