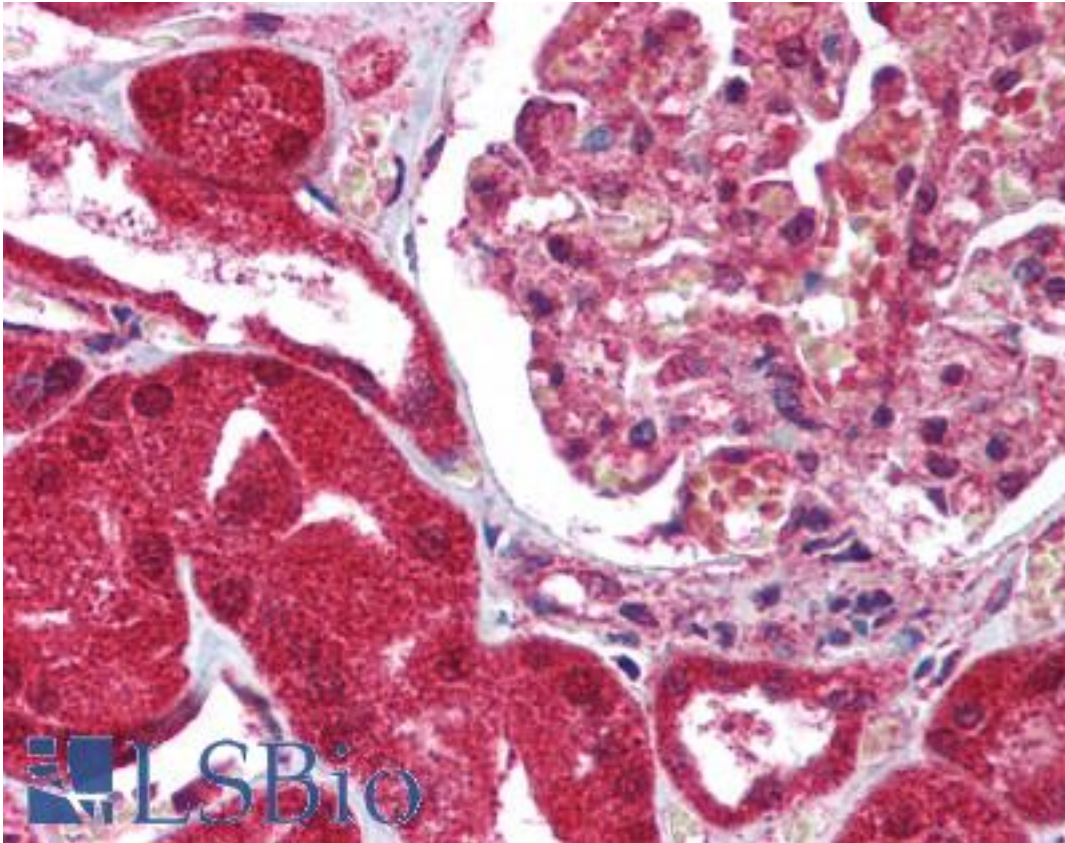


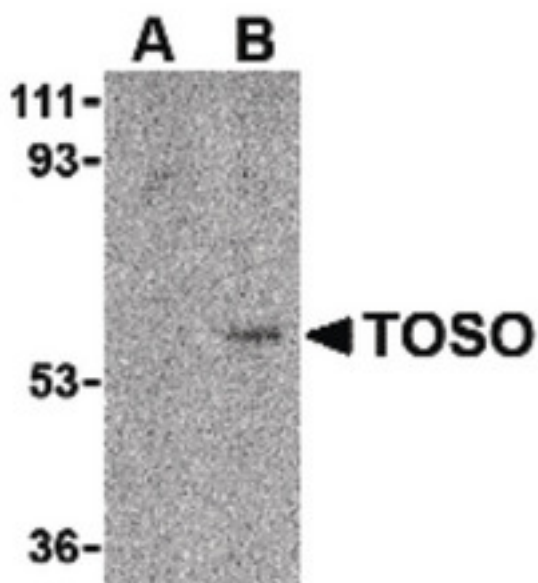
TOSO / FAIM3 Rabbit anti-Human Polyclonal (C-Terminus) Antibody - LS-B1353 - LSBio	
CatalogID:	LS-B1353
Validation:	This antibody replaces catalog number LS-C19447. It has been validated for use in the following assays: IHC.
Target:	Fas apoptotic inhibitory molecule 3 (FAIM3)
Synonyms:	FAIM3 Antibody, FCMR Antibody, Immunoglobulin mu Fc receptor Antibody, TOSO Antibody, Fc mu receptor Antibody, IgM Fc receptor Antibody
Host	FAIM3 antibody was produced in Rabbit
Clonality:	Polyclonal
Immunogen Species:	TOSO / FAIM3 antibody was raised against Human
Antigen Type:	Synthetic peptide
Immunogen:	TOSO / FAIM3 antibody was raised against a 13 amino acid peptide from near the carboxy terminus of human Toso.
Specificity:	13 amino acid peptide from near the carboxy terminus of human Toso
Epitope:	C-Terminus
Reactivity:	Human
Purification:	Immunoaffinity purified
Presentation:	PBS, 0.02% sodium azide.
Recommended Storage:	Short term 4°C, long term aliquot and store at -20°C, avoid freeze thaw cycles. Store undiluted.
Usage Summary:	Immunohistochemistry: LS-B1353 was validated for use in immunohistochemistry on a panel of 21 formalin-fixed, paraffin-embedded (FFPE) human tissues after heat induced antigen retrieval in pH 6.0 citrate buffer. After incubation with the primary antibody, slides were incubated with biotinylated secondary antibody, followed by alkaline phosphatase-streptavidin and chromogen. The stained slides were evaluated by a pathologist to confirm staining specificity. The optimal working concentration for LS-B1353 was determined to be 5 ug/ml.
Uses:	IHC - Paraffin (5 µg/ml), Western blot (1 µg/ml) (Optimal dilution to be determined by the researcher)
Size:	50 µg
Concentration:	0.5 mg/ml

Immunohistochemistry Image:



Anti-FAIM3 antibody IHC of human kidney. Immunohistochemistry of formalin-fixed, paraffin-embedded tissue after heat-induced antigen retrieval. Antibody LS-B1353 concentration 5 ug/ml.

Western Blot Image:



Western blot of Toso in human lung tissue lysate with Toso antibody at 1 ug/ml in either the (A) presence, or (B) absence of blocking peptide.

Requested From:	Japan
Laboratory Reagent For In Vitro Research Use Only	
Not for resale without prior written consent from LifeSpan BioSciences, Inc.	
Created on 9/23/2014	
© 2014 LifeSpan BioSciences	