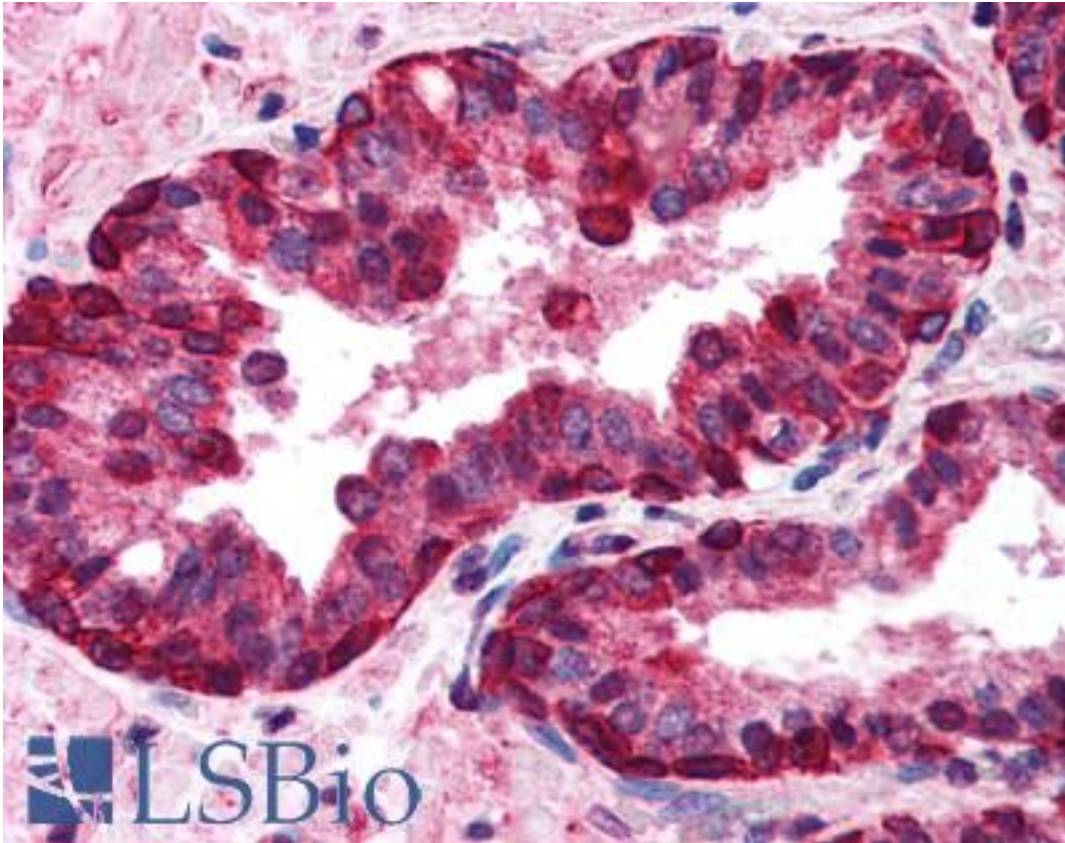


**IRF3 / IRF-3 Rabbit anti-Human Polyclonal (C-Terminus) Antibody - LS-B135 - LSBio**

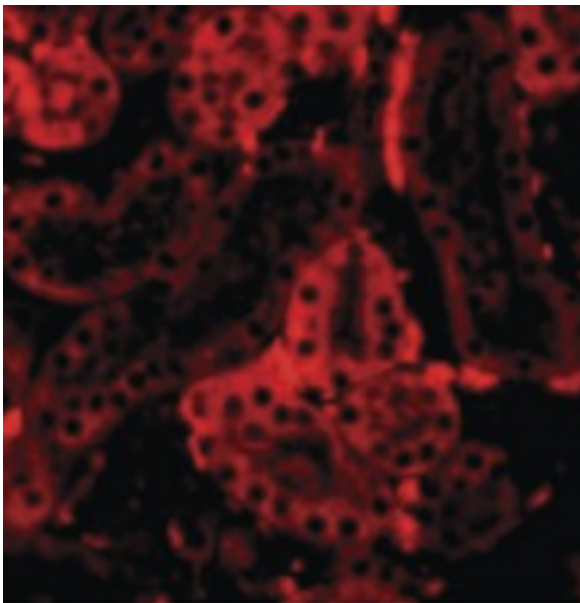
<b>CatalogID:</b>	LS-B135
<b>Validation:</b>	This antibody replaces catalog number LS-C456. It has been validated for use in the following assays: IHC.
<b>Target:</b>	interferon regulatory factor 3 (IRF3)
<b>Synonyms:</b>	IRF3 Antibody, Interferon regulatory factor 3 Antibody, IRF-3 Antibody
<b>Host</b>	IRF3 antibody was produced in Rabbit
<b>Clonality:</b>	Polyclonal
<b>Immunogen Species:</b>	IRF3 / IRF-3 antibody was raised against Human
<b>Antigen Type:</b>	Synthetic peptide
<b>Immunogen:</b>	IRF3 / IRF-3 antibody was raised against a peptide corresponding to 14 amino acids near the carboxy-terminus of human IRF3.
<b>Specificity:</b>	peptide corresponding to 14 amino acids near the carboxy-terminus of human IRF3
<b>Epitope:</b>	C-Terminus
<b>Reactivity:</b>	Human, Mouse
<b>Purification:</b>	Immunoaffinity purified
<b>Presentation:</b>	PBS, 0.02% sodium azide.
<b>Recommended Storage:</b>	Short term 4°C, long term aliquot and store at -20°C, avoid freeze thaw cycles. Store undiluted.
<b>Usage Summary:</b>	Immunohistochemistry: LS-B135 was validated for use in immunohistochemistry on a panel of 21 formalin-fixed, paraffin-embedded (FFPE) human tissues after heat induced antigen retrieval in pH 6.0 citrate buffer. After incubation with the primary antibody, slides were incubated with biotinylated secondary antibody, followed by alkaline phosphatase-streptavidin and chromogen. The stained slides were evaluated by a pathologist to confirm staining specificity. The optimal working concentration for LS-B135 was determined to be 5-10 ug/ml.
<b>Uses:</b>	IHC - Paraffin (5 - 10 µg/ml), Western blot (1 - 2 µg/ml) (Optimal dilution to be determined by the researcher)
<b>Size:</b>	50 µg
<b>Concentration:</b>	1 mg/ml

**Immunohistochemistry Image:**



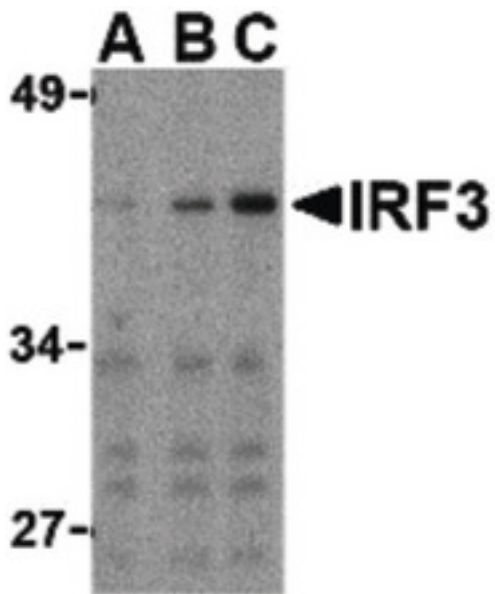
Anti-IRF3 antibody IHC of human prostate. Immunohistochemistry of formalin-fixed, paraffin-embedded tissue after heat-induced antigen retrieval. Antibody LS-B135 concentration 10 ug/ml.

**Immunofluorescence Image:**



Immunofluorescence of IRF3 in Mouse Kidney cells with IRF3 antibody at 20 ug/ml.

**Western Blot Image:**



Western blot of IRF3 in Ramos whole cell lysate with IRF3 antibody at (A) 1, (B) 2, and (C) 4 ug/ml.

**Requested From:**

Japan

Laboratory Reagent For In Vitro Research Use Only

Not for resale without prior written consent from LifeSpan BioSciences, Inc.

Created on 9/23/2014

© 2014 LifeSpan BioSciences