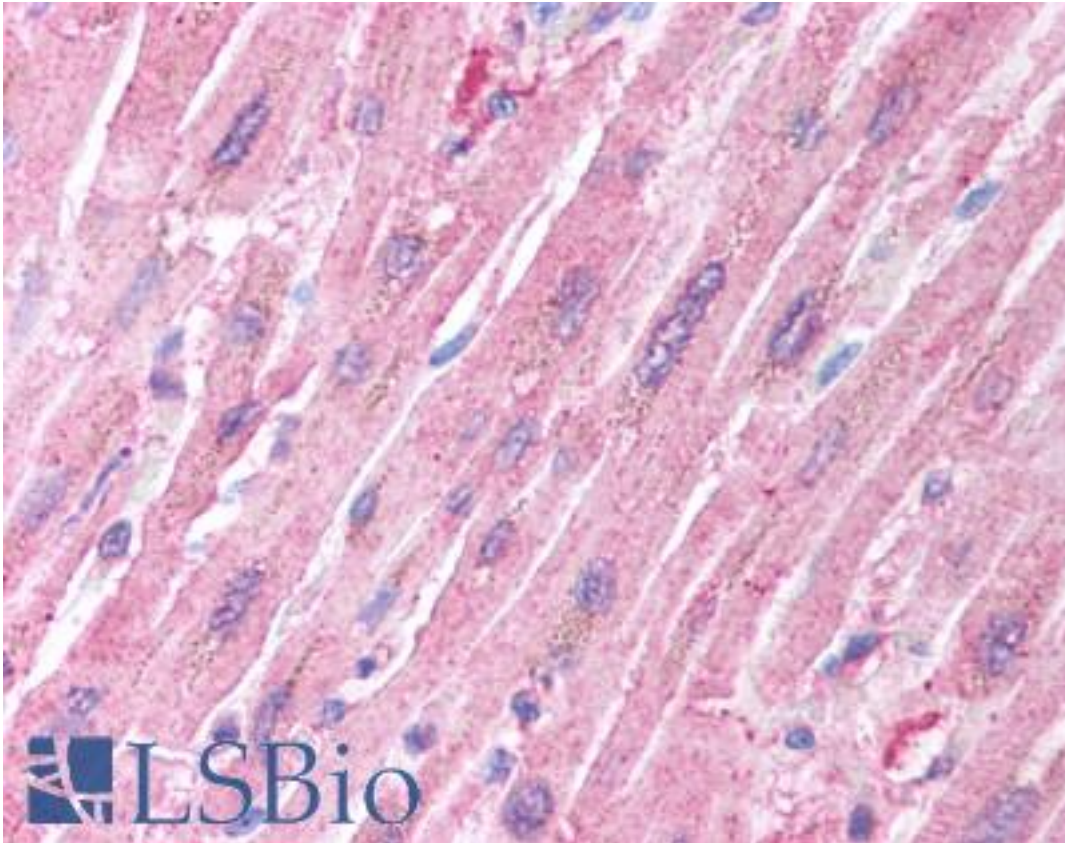


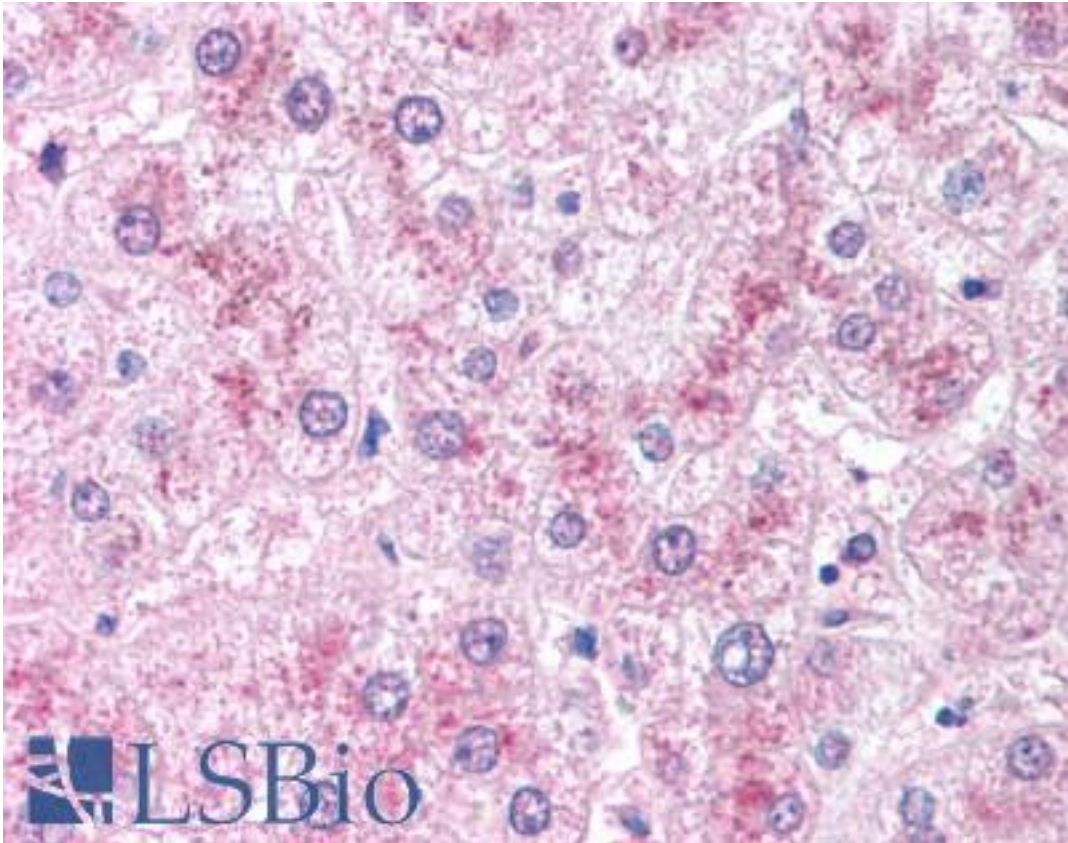
CRADD / RAIDD Rabbit anti-Human Polyclonal (aa99-117) Antibody - LS-B1349 - LSBio	
CatalogID:	LS-B1349
Validation:	This antibody replaces catalog number LS-C255. It has been validated for use in the following assays: IHC.
Target:	CASP2 and RIPK1 domain containing adaptor with death domain (CRADD)
Synonyms:	CRADD Antibody, Death adaptor molecule RAIDD Antibody, RAIDD Antibody, MRT34 Antibody
Family / Subfamily:	Apoptosis / Not assigned-Other
Host	CRADD antibody was produced in Rabbit
Clonality:	Polyclonal
Immunogen Species:	CRADD / RAIDD antibody was raised against Human
Antigen Type:	Synthetic peptide
Immunogen:	CRADD / RAIDD antibody was raised against a peptide corresponding to amino acids 99 to 117 of human RAIDD .
Specificity:	peptide corresponding to amino acids 99 to 117 of human RAIDD
Epitope:	aa99-117
Reactivity:	Human
Purification:	Immunoaffinity purified
Presentation:	PBS, 0.02% sodium azide.
Recommended Storage:	Short term 4°C, long term aliquot and store at -20°C, avoid freeze thaw cycles. Store undiluted.
Usage Summary:	Immunohistochemistry: LS-B1349 was validated for use in immunohistochemistry on a panel of 21 formalin-fixed, paraffin-embedded (FFPE) human tissues after heat induced antigen retrieval in pH 6.0 citrate buffer. After incubation with the primary antibody, slides were incubated with biotinylated secondary antibody, followed by alkaline phosphatase-streptavidin and chromogen. The stained slides were evaluated by a pathologist to confirm staining specificity. The optimal working concentration for LS-B1349 was determined to be 5 ug/ml.
Uses:	IHC - Paraffin (5 µg/ml), ICC, Western blot (1:500 - 1:1000) (Optimal dilution to be determined by the researcher)
Size:	50 µg
Concentration:	0.5 mg/ml

Immunohistochemistry Image:



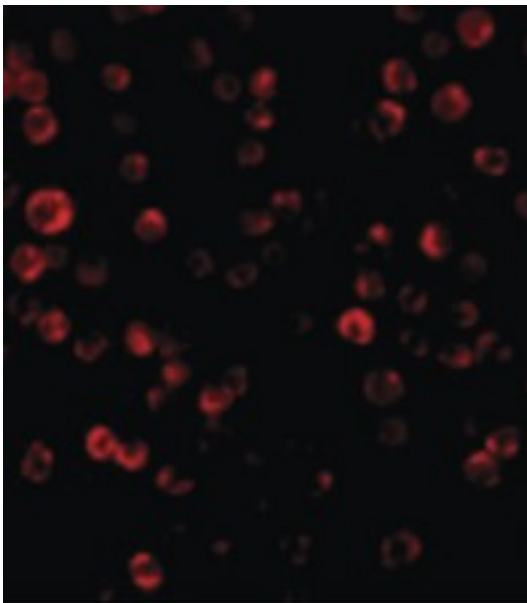
Anti-CRADD / RAIDD antibody IHC of human heart. Immunohistochemistry of formalin-fixed, paraffin-embedded tissue after heat-induced antigen retrieval. Antibody LS-B1349 concentration 5 ug/ml.

Immunohistochemistry Image:



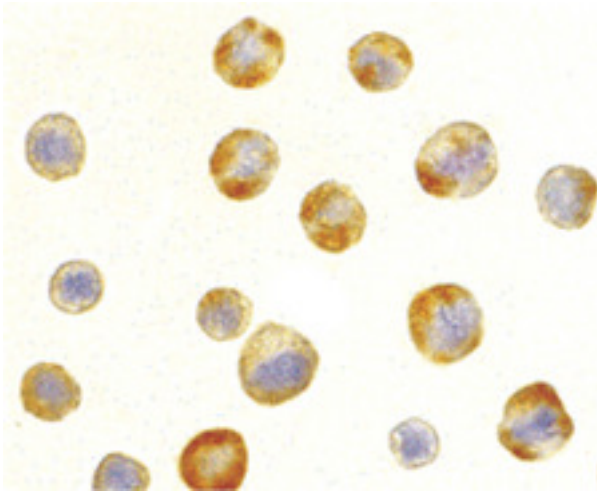
Anti-CRADD / RAIDD antibody IHC of human liver. Immunohistochemistry of formalin-fixed, paraffin-embedded tissue after heat-induced antigen retrieval. Antibody LS-B1349 concentration 5 ug/ml.

Immunofluorescence Image:



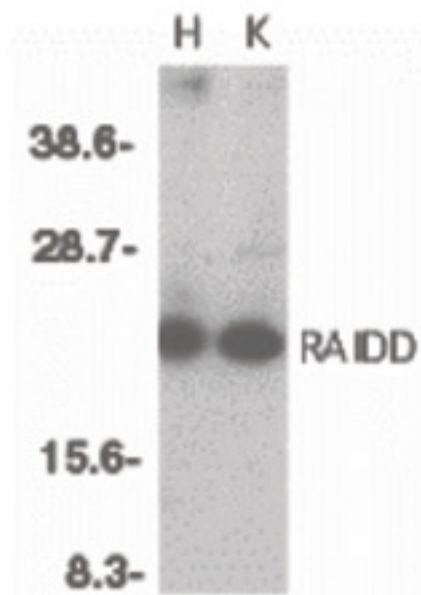
Immunofluorescence of RAIDD in HeLa cells with RAIDD antibody at 20 ug/ml.

Immunocytochemistry Image:



Immunocytochemistry of RAIDD in HeLa cells with RAIDD antibody at 5 ug/ml.

Western Blot Image:



Western blot of RAIDD in whole cell lysates from HeLa (H) or K562 (K) cells with RAIDD antibody at 1:500 dilution.

Requested From:

Japan

Laboratory Reagent For In Vitro Research Use Only

Not for resale without prior written consent from LifeSpan BioSciences, Inc.

Created on 9/23/2014

© 2014 LifeSpan BioSciences