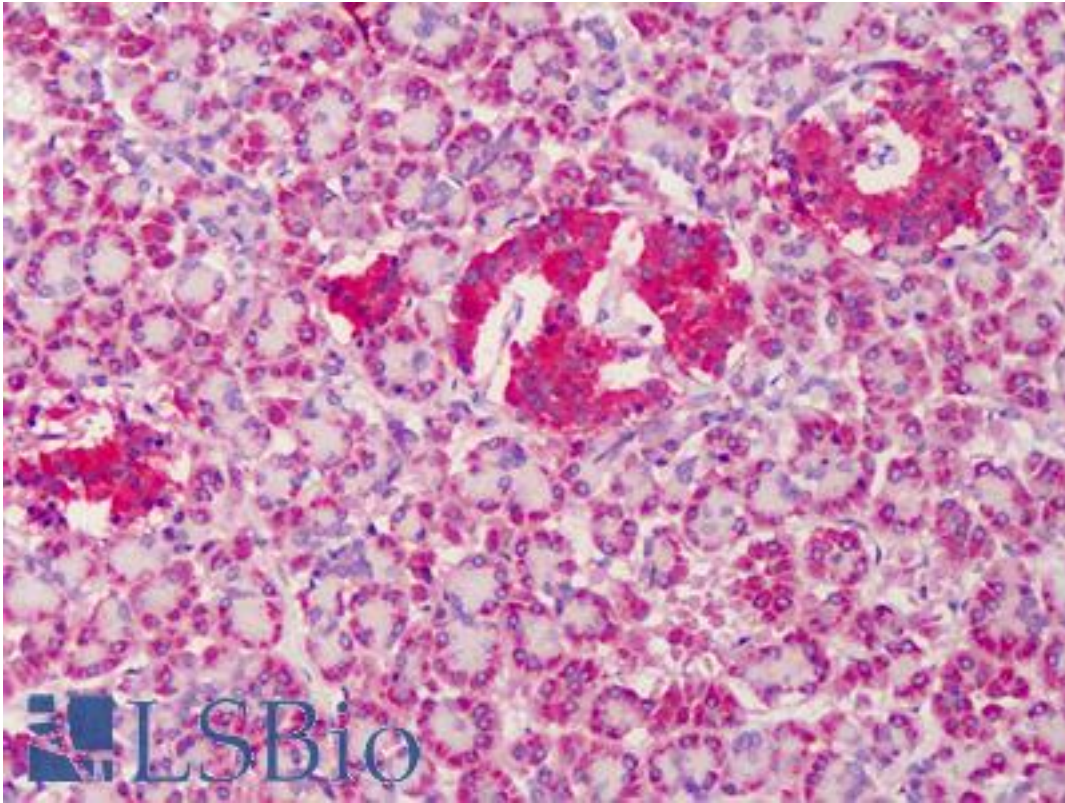


**CD82 Rabbit anti-Human Polyclonal (C-Terminus) Antibody - LS-B1346 - LSBio**

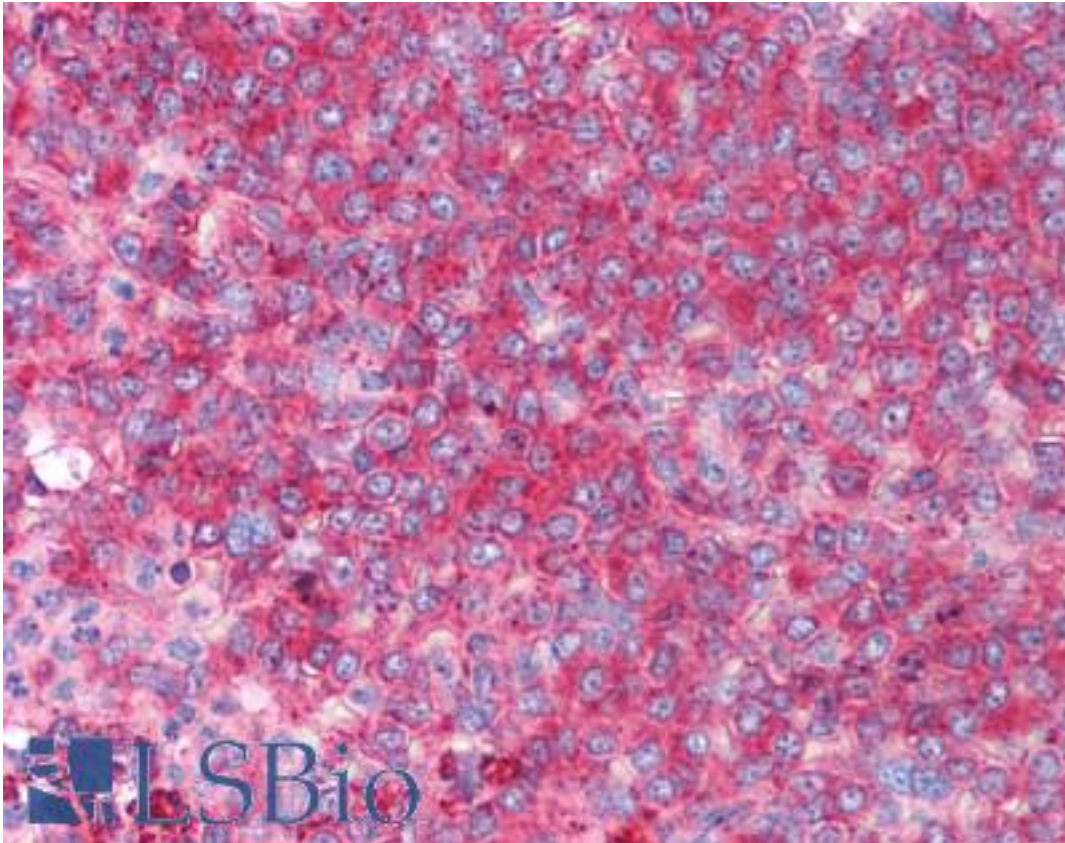
<b>CatalogID:</b>	LS-B1346
<b>Validation:</b>	This antibody replaces catalog number LS-C19692. It has been validated for use in the following assays: IHC.
<b>Target:</b>	CD82 molecule
<b>Synonyms:</b>	CD82 Antibody, 4F9 Antibody, C33 Antibody, C33 antigen Antibody, CD82 molecule Antibody, GR15 Antibody, IA4 Antibody, Inducible membrane protein R2 Antibody, KAI1 Antibody, Kangai 1 Antibody, R2 Antibody, R2 leukocyte antigen Antibody, SAR2 Antibody, ST6 Antibody, Tetraspanin-27 Antibody, Tspan-27 Antibody, TSPAN27 Antibody, CD82 antigen Antibody, Leukocyte surface antigen r2 Antibody, Metastasis suppressor Kangai-1 Antibody
<b>Family / Subfamily:</b>	Tetraspan / not assigned-Tetraspan
<b>Host</b>	CD82 antibody was produced in Rabbit
<b>Clonality:</b>	Polyclonal
<b>Immunogen Species:</b>	CD82 antibody was raised against Human
<b>Antigen Type:</b>	Synthetic peptide
<b>Immunogen:</b>	CD82 antibody was raised against a 15 amino acid peptide from near the carboxy terminus of human KAI1.
<b>Specificity:</b>	15 amino acid peptide from near the carboxy terminus of human KAI1.
<b>Epitope:</b>	C-Terminus
<b>Reactivity:</b>	Human, Mouse, Rat
<b>Purification:</b>	Immunoaffinity purified
<b>Presentation:</b>	PBS, 0.02% sodium azide.
<b>Recommended Storage:</b>	Short term 4°C, long term aliquot and store at -20°C, avoid freeze thaw cycles. Store undiluted.
<b>Usage Summary:</b>	Immunohistochemistry: LS-B1346 was validated for use in immunohistochemistry on a panel of 21 formalin-fixed, paraffin-embedded (FFPE) human tissues after heat induced antigen retrieval in pH 6.0 citrate buffer. After incubation with the primary antibody, slides were incubated with biotinylated secondary antibody, followed by alkaline phosphatase-streptavidin and chromogen. The stained slides were evaluated by a pathologist to confirm staining specificity. The optimal working concentration for LS-B1346 was determined to be 0.5-1 ug/ml.
<b>Uses:</b>	IHC - Paraffin (0.5 - 1 µg/ml), Western blot (Optimal dilution to be determined by the researcher)
<b>Size:</b>	50 µg
<b>Concentration:</b>	1 mg/ml

**Immunohistochemistry Image:**



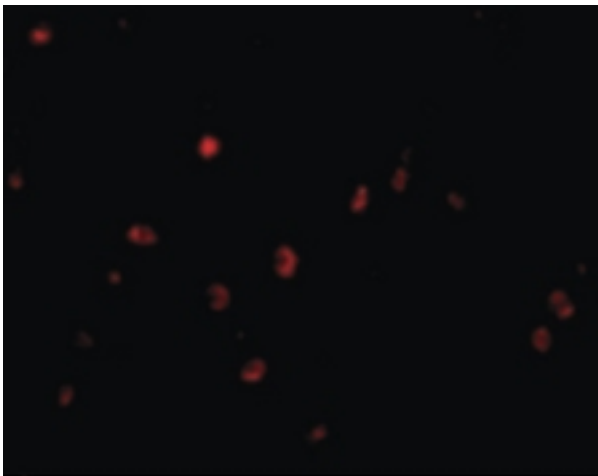
Anti-CD82 antibody IHC of human pancreas. Immunohistochemistry of formalin-fixed, paraffin-embedded tissue after heat-induced antigen retrieval. Antibody LS-B1346 concentration 0.5 ug/ml.

**Immunohistochemistry Image:**



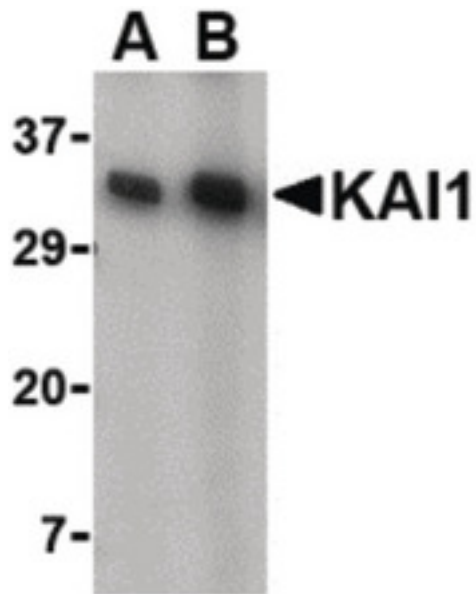
Anti-CD82 antibody IHC of human spleen. Immunohistochemistry of formalin-fixed, paraffin-embedded tissue after heat-induced antigen retrieval. Antibody LS-B1346 concentration 1 ug/ml.

**Immunofluorescence Image:**



Immunofluorescence of KAI1 in Human Colon cells with KAI1 antibody at 20 ug/ml.

Western Blot Image:



Western blot of KAI1 in A549 cell lysate with KAI1 antibody at (A) 0.5 and (B) 1 ug/ml.

Requested From:

Japan

Laboratory Reagent For In Vitro Research Use Only

Not for resale without prior written consent from LifeSpan BioSciences, Inc.

Created on 9/23/2014

© 2014 LifeSpan BioSciences