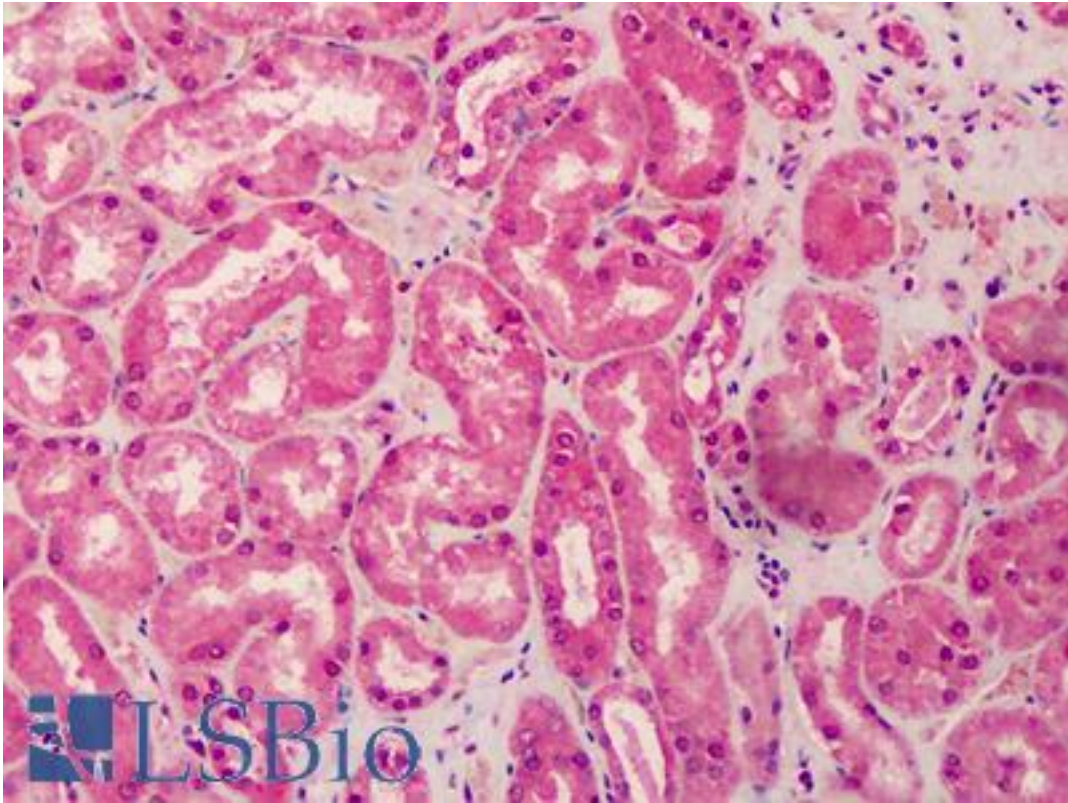


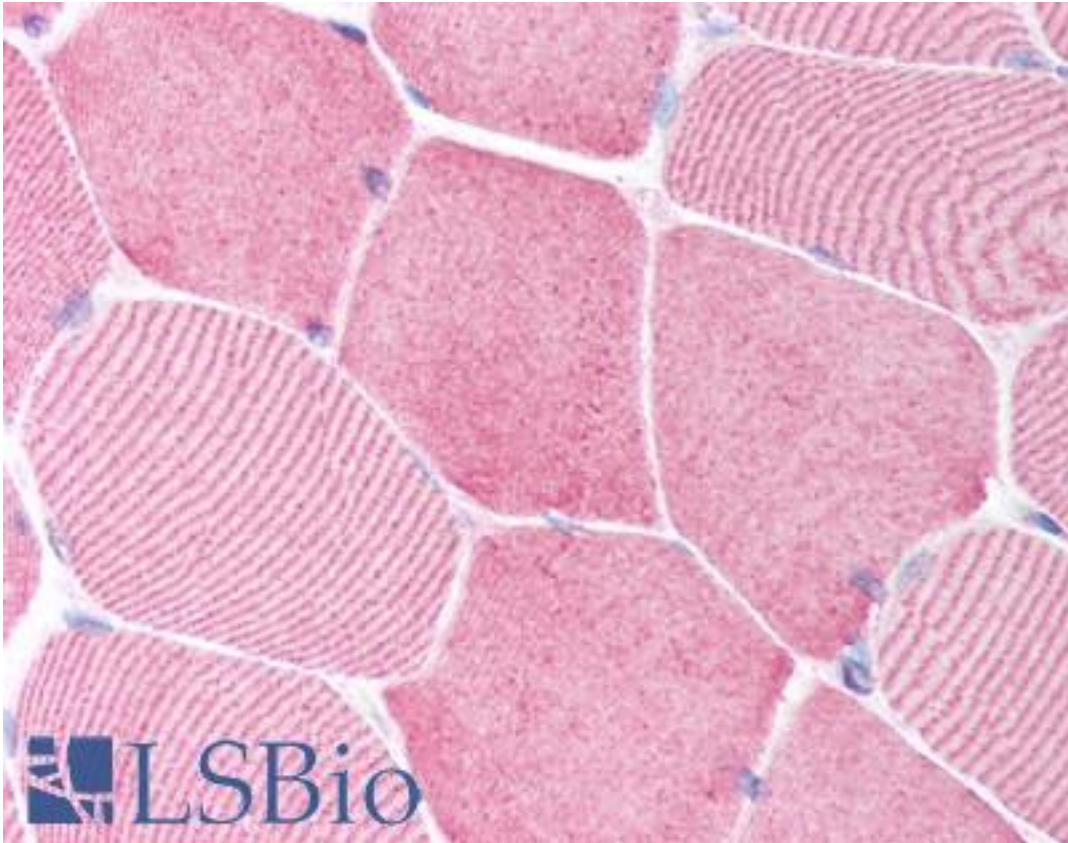
CASP6 / Caspase 6 Rabbit anti-Human Polyclonal (N-Terminus) Antibody - LS-B1345 - LSBio	
CatalogID:	LS-B1345
Validation:	This antibody replaces catalog number LS-C470. It has been validated for use in the following assays: IHC.
Target:	caspase 6, apoptosis-related cysteine peptidase (CASP6)
Synonyms:	CASP6 Antibody, Apoptotic protease Mch-2 Antibody, Caspase 6 Antibody, CASP-6 Antibody, Caspase-6 Antibody, Mch-2 Antibody, MCH2 Antibody
Family / Subfamily:	Protease / Cysteine C14
Host	CASP6 antibody was produced in Rabbit
Clonality:	Polyclonal
Immunogen Species:	CASP6 / Caspase 6 antibody was raised against Human
Antigen Type:	Synthetic peptide
Immunogen:	CASP6 / Caspase 6 antibody was raised against a 15 amino acid peptide from near the amino-terminus of human Caspase-6.
Specificity:	15 amino acid peptide from near the amino-terminus of human Caspase-6
Epitope:	N-Terminus
Reactivity:	Human
Non-Reactivity:	Mouse, Rat
Purification:	Immunoaffinity purified
Presentation:	PBS, 0.02% sodium azide.
Recommended Storage:	Short term 4°C, long term aliquot and store at -20°C, avoid freeze thaw cycles. Store undiluted.
Usage Summary:	Immunohistochemistry: LS-B1345 was validated for use in immunohistochemistry on a panel of 21 formalin-fixed, paraffin-embedded (FFPE) human tissues after heat induced antigen retrieval in pH 6.0 citrate buffer. After incubation with the primary antibody, slides were incubated with biotinylated secondary antibody, followed by alkaline phosphatase-streptavidin and chromogen. The stained slides were evaluated by a pathologist to confirm staining specificity. The optimal working concentration for LS-B1345 was determined to be 5 ug/ml.
Uses:	IHC - Paraffin (5 µg/ml), ICC, Western blot (0.5 - 2 µg/ml) (Optimal dilution to be determined by the researcher)
Size:	50 µg
Concentration:	1 mg/ml

Immunohistochemistry Image:



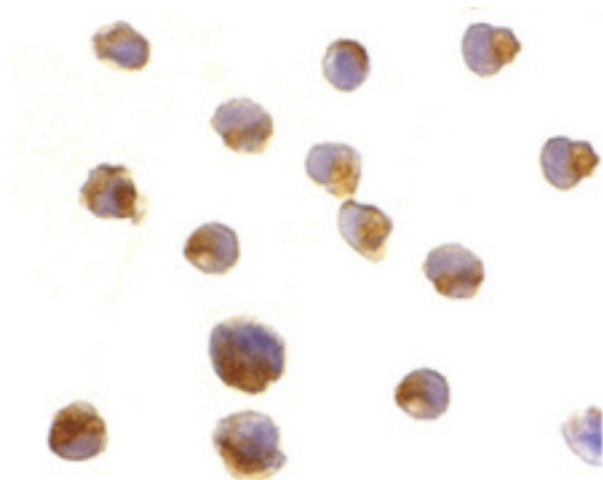
Anti-Caspase 6 antibody IHC of human kidney. Immunohistochemistry of formalin-fixed, paraffin-embedded tissue after heat-induced antigen retrieval. Antibody LS-B1345 concentration 5 ug/ml.

Immunohistochemistry Image:



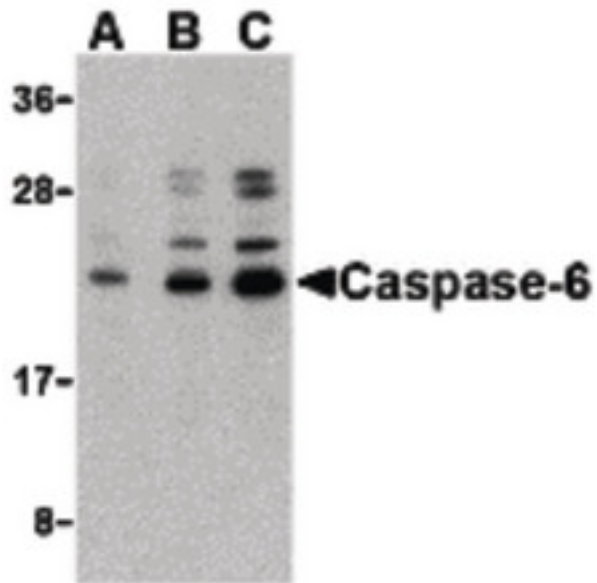
Anti-Caspase 6 antibody IHC of human skeletal muscle. Immunohistochemistry of formalin-fixed, paraffin-embedded tissue after heat-induced antigen retrieval. Antibody LS-B1345 concentration 5 ug/ml.

Immunocytochemistry Image:



Immunocytochemistry of caspase-6 in Jurkat cells with caspase-6 antibody at 2 ug/ml.

Western Blot Image:



Western blot of caspase-6 in Jurkat cell lysate with caspase-6 antibody at (A) 0.5, (B) 1, and (C) 2 ug/ml.

Requested From:

Japan

Laboratory Reagent For In Vitro Research Use Only

Not for resale without prior written consent from LifeSpan BioSciences, Inc.

Created on 9/23/2014

© 2014 LifeSpan BioSciences