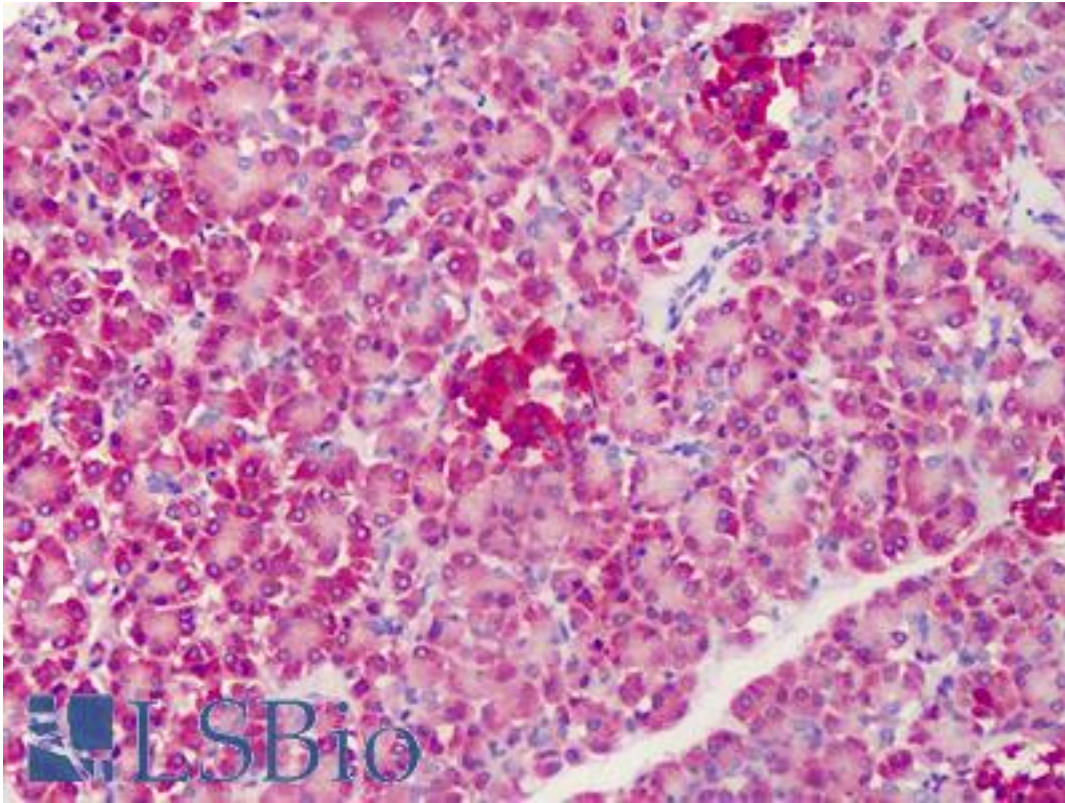


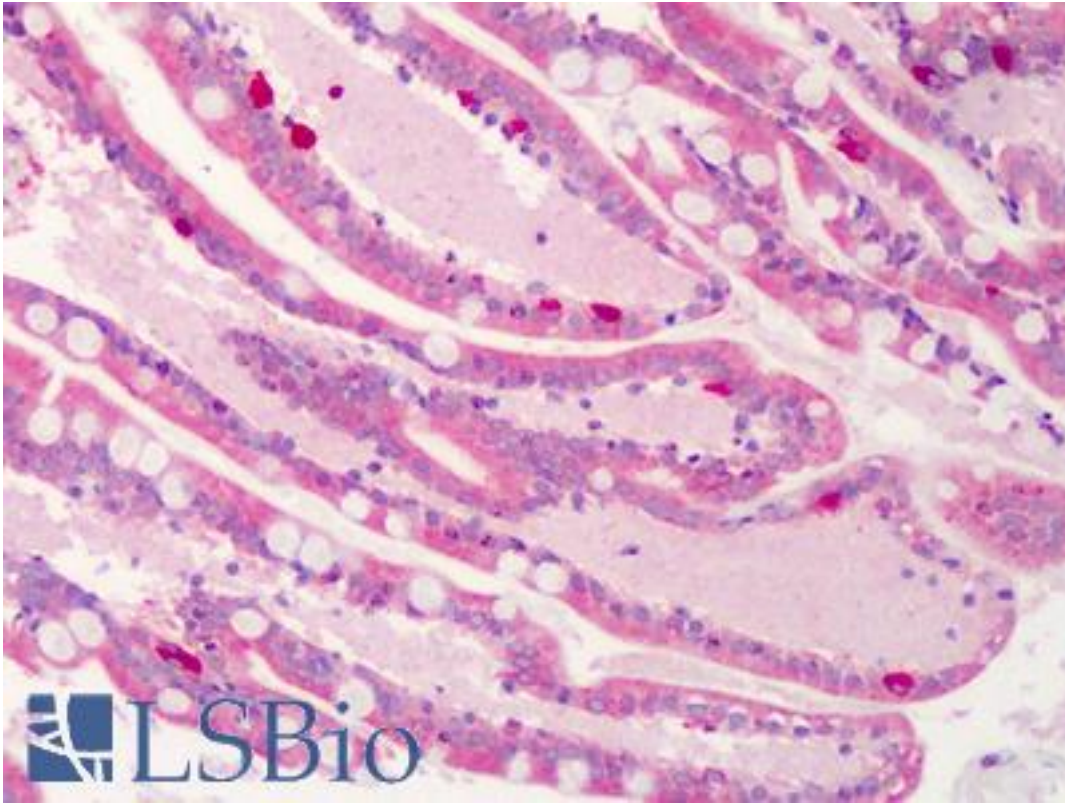
| C1QTNF4 / CTRP4 Rabbit anti-Human Polyclonal (C-Terminus) Antibody - LS-B1342 - LSBio | |
|---|---|
| CatalogID: | LS-B1342 |
| Validation: | This antibody replaces catalog number LS-C19520. It has been validated for use in the following assays: IHC. |
| Target: | C1q and tumor necrosis factor related protein 4 (C1QTNF4) |
| Synonyms: | C1QTNF4 Antibody, ZACRP4 Antibody, CTRP4 Antibody |
| Host | C1QTNF4 antibody was produced in Rabbit |
| Clonality: | Polyclonal |
| Immunogen Species: | C1QTNF4 / CTRP4 antibody was raised against Human |
| Antigen Type: | Synthetic peptide |
| Immunogen: | C1QTNF4 / CTRP4 antibody was raised against a 16 amino acid peptide from near the carboxy terminus of human CTRP4. |
| Specificity: | 16 amino acid peptide from near the carboxy terminus of human CTRP4 |
| Epitope: | C-Terminus |
| Reactivity: | Human, Mouse, Rat |
| Purification: | Immunoaffinity purified |
| Presentation: | PBS, 0.02% sodium azide. |
| Recommended Storage: | Short term 4°C, long term aliquot and store at -20°C, avoid freeze thaw cycles. Store undiluted. |
| Usage Summary: | Immunohistochemistry: LS-B1342 was validated for use in immunohistochemistry on a panel of 21 formalin-fixed, paraffin-embedded (FFPE) human tissues after heat induced antigen retrieval in pH 6.0 citrate buffer. After incubation with the primary antibody, slides were incubated with biotinylated secondary antibody, followed by alkaline phosphatase-streptavidin and chromogen. The stained slides were evaluated by a pathologist to confirm staining specificity. The optimal working concentration for LS-B1342 was determined to be 5 ug/ml. |
| Uses: | IHC - Paraffin (5 µg/ml), Western blot (1 - 2 µg/ml) (Optimal dilution to be determined by the researcher) |
| Size: | 50 µg |
| Concentration: | 1 mg/ml |

Immunohistochemistry Image:



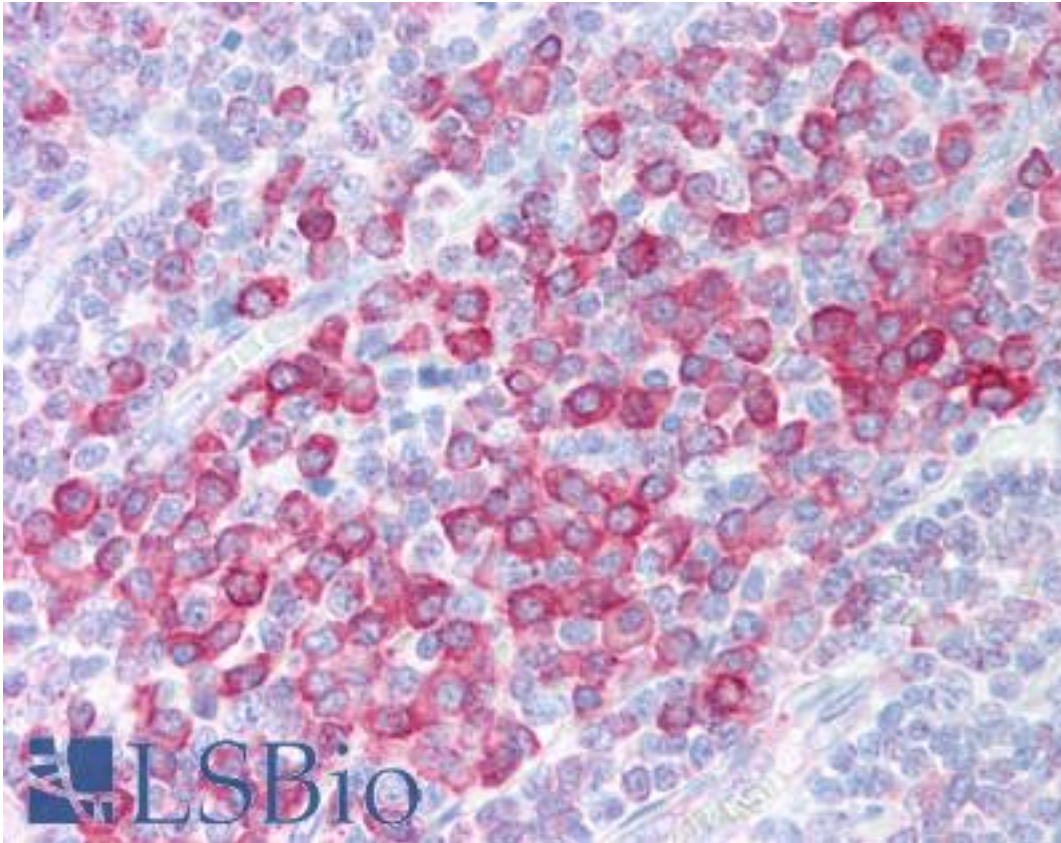
Anti-C1QTNF4 / CTRP4 antibody IHC of human pancreas. Immunohistochemistry of formalin-fixed, paraffin-embedded tissue after heat-induced antigen retrieval. Antibody LS-B1342 concentration 5 ug/ml.

Immunohistochemistry Image:



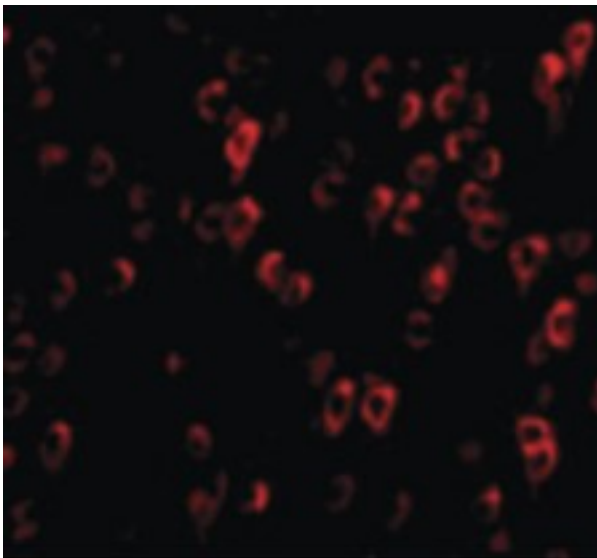
Anti-C1QTNF4 / CTRP4 antibody IHC of human small intestine. Immunohistochemistry of formalin-fixed, paraffin-embedded tissue after heat-induced antigen retrieval. Antibody LS-B1342 concentration 5 ug/ml.

Immunohistochemistry Image:



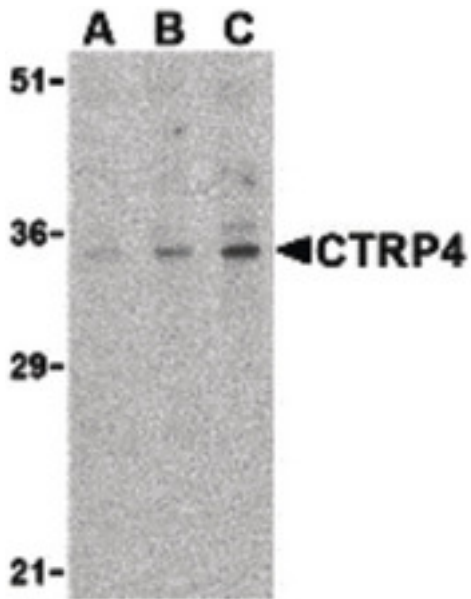
Anti-C1QTNF4 / CTRP4 antibody IHC of human tonsil. Immunohistochemistry of formalin-fixed, paraffin-embedded tissue after heat-induced antigen retrieval. Antibody LS-B1342 concentration 5 ug/ml.

Immunofluorescence Image:



Immunofluorescence of CTRP4 in Rat Brain cells with CTRP4 antibody at 20 ug/ml.

Western Blot Image:



Western blot of CTRP4 in rat brain cell lysate with CTRP4 antibody at (A) 1, (B) 2, and (C) 4 ug/ml.

Requested From:

Japan

Laboratory Reagent For In Vitro Research Use Only

Not for resale without prior written consent from LifeSpan BioSciences, Inc.

Created on 9/23/2014

© 2014 LifeSpan BioSciences