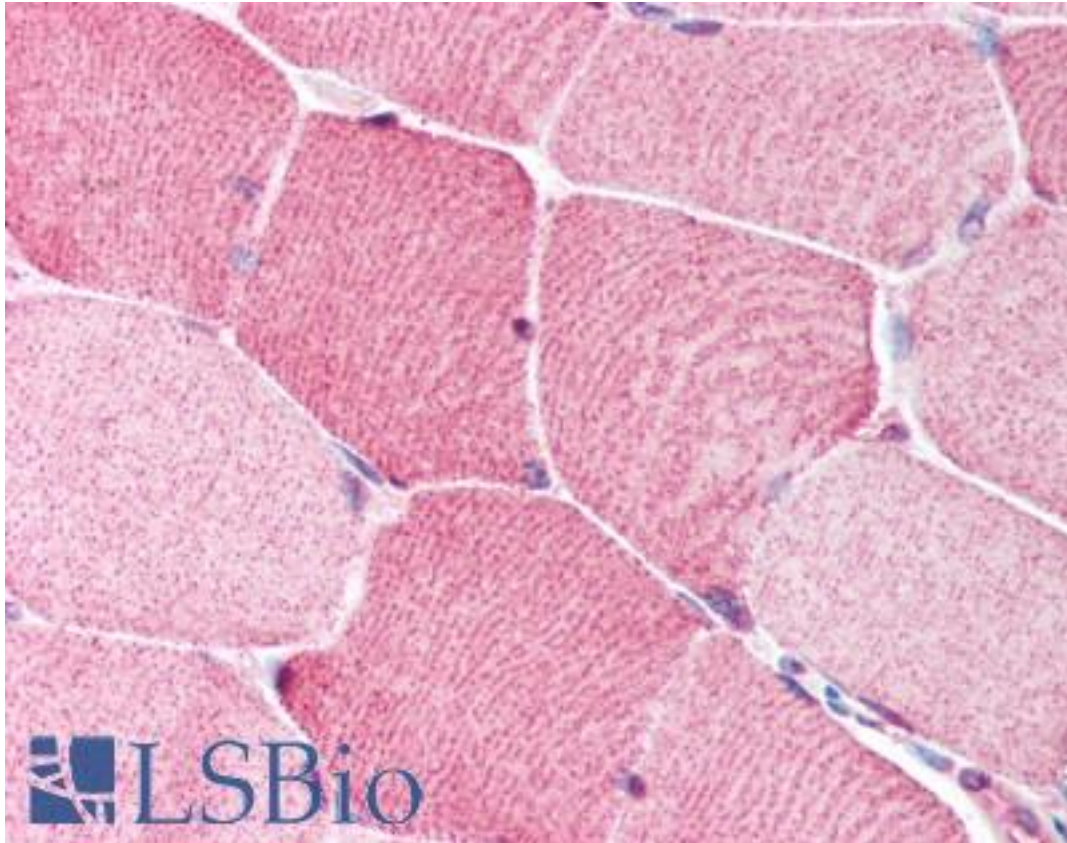


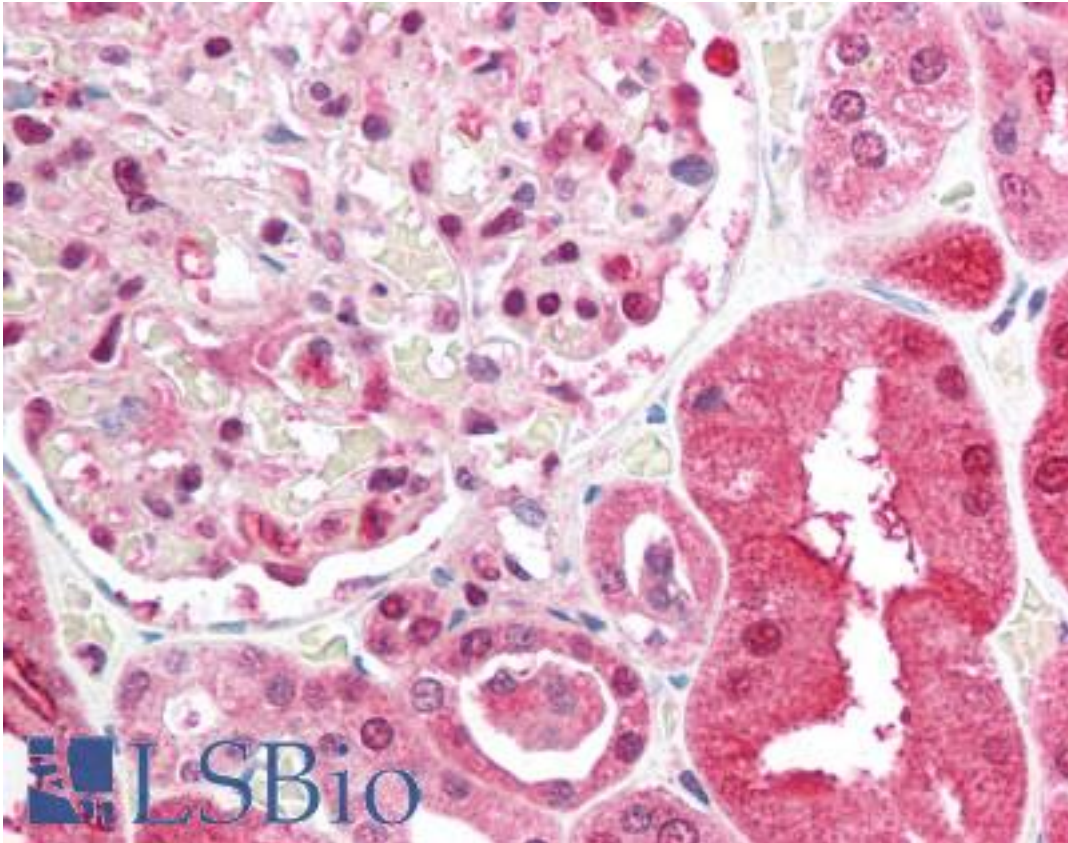
BRCC3 / BRCC36 Rabbit anti-Human Polyclonal (N-Terminus) Antibody - LS-B1339 - LSBio	
<b>CatalogID:</b>	LS-B1339
<b>Validation:</b>	This antibody replaces catalog number LS-C34744. It has been validated for use in the following assays: IHC.
<b>Target:</b>	BRCA1/BRCA2-containing complex, subunit 3 (BRCC3)
<b>Synonyms:</b>	BRCC3 Antibody, C6.1A Antibody, BRCC36 Antibody, BRISC complex subunit BRCC36 Antibody, BRCA1-A complex subunit BRCC36 Antibody, CXorf53 Antibody, RP11-143H17.2 Antibody
<b>Host</b>	BRCC3 antibody was produced in Rabbit
<b>Clonality:</b>	Polyclonal
<b>Isotype:</b>	IgG
<b>Immunogen Species:</b>	BRCC3 / BRCC36 antibody was raised against Human
<b>Antigen Type:</b>	Synthetic peptide
<b>Immunogen:</b>	BRCC3 / BRCC36 antibody was raised against a 18 amino acid peptide from near the amino terminus of human BRCC36.
<b>Specificity:</b>	an 18 amino acid peptide from near the amino terminus of human BRCC36
<b>Epitope:</b>	N-Terminus
<b>Reactivity:</b>	Human, Mouse, Rat
<b>Purification:</b>	Immunoaffinity purified
<b>Presentation:</b>	PBS, 0.02% sodium azide.
<b>Recommended Storage:</b>	Short term 4°C, long term aliquot and store at -20°C, avoid freeze thaw cycles. Store undiluted.
<b>Usage Summary:</b>	Immunohistochemistry: LS-B1339 was validated for use in immunohistochemistry on a panel of 21 formalin-fixed, paraffin-embedded (FFPE) human tissues after heat induced antigen retrieval in pH 6.0 citrate buffer. After incubation with the primary antibody, slides were incubated with biotinylated secondary antibody, followed by alkaline phosphatase-streptavidin and chromogen. The stained slides were evaluated by a pathologist to confirm staining specificity. The optimal working concentration for LS-B1339 was determined to be 5 ug/ml.
<b>Uses:</b>	IHC - Paraffin (5 µg/ml), Western blot (0.5 - 2 µg/ml) (Optimal dilution to be determined by the researcher)
<b>Size:</b>	50 µg
<b>Concentration:</b>	1 mg/ml

**Immunohistochemistry Image:**



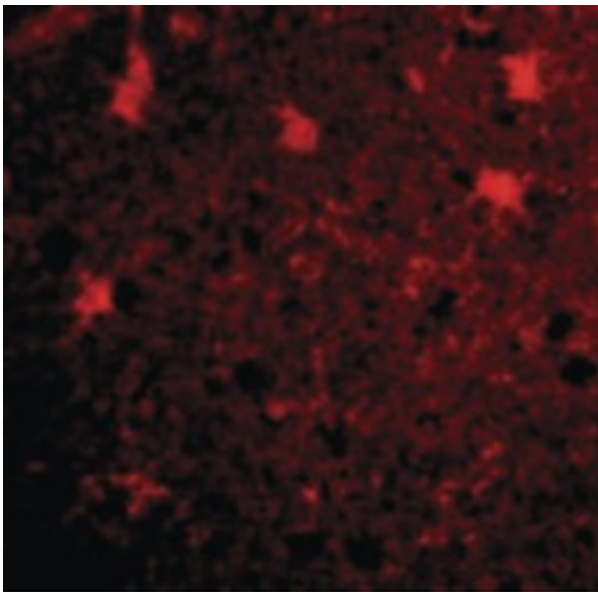
Anti-BRCC3 / BRCC36 antibody IHC of human skeletal muscle. Immunohistochemistry of formalin-fixed, paraffin-embedded tissue after heat-induced antigen retrieval. Antibody LS-B1339 concentration 5 ug/ml.

**Immunohistochemistry Image:**



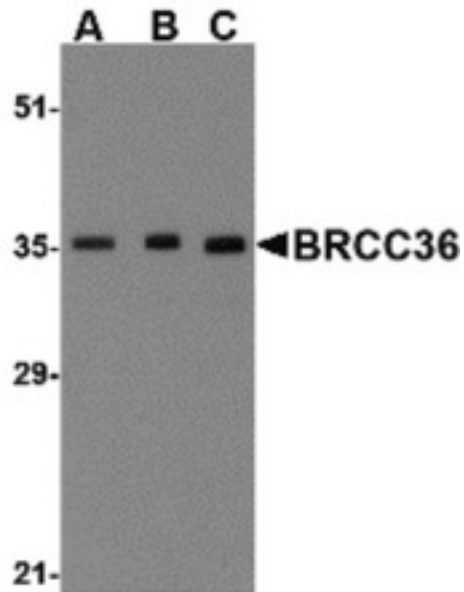
Anti-BRCC3 / BRCC36 antibody IHC of human kidney. Immunohistochemistry of formalin-fixed, paraffin-embedded tissue after heat-induced antigen retrieval. Antibody LS-B1339 concentration 5 ug/ml.

**Immunofluorescence Image:**



Immunofluorescence of BRCC36 in Human Brain cells with BRCC36 antibody at 20 ug/ml.

**Western Blot Image:**



Western blot of BRCC36 in MCF7 cell lysate with BRCC36 antibody at (A) 0.5, (B) 1 and (C) 2 ug/ml.

**Requested From:**

Japan

Laboratory Reagent For In Vitro Research Use Only

Not for resale without prior written consent from LifeSpan BioSciences, Inc.

Created on 9/23/2014

© 2014 LifeSpan BioSciences