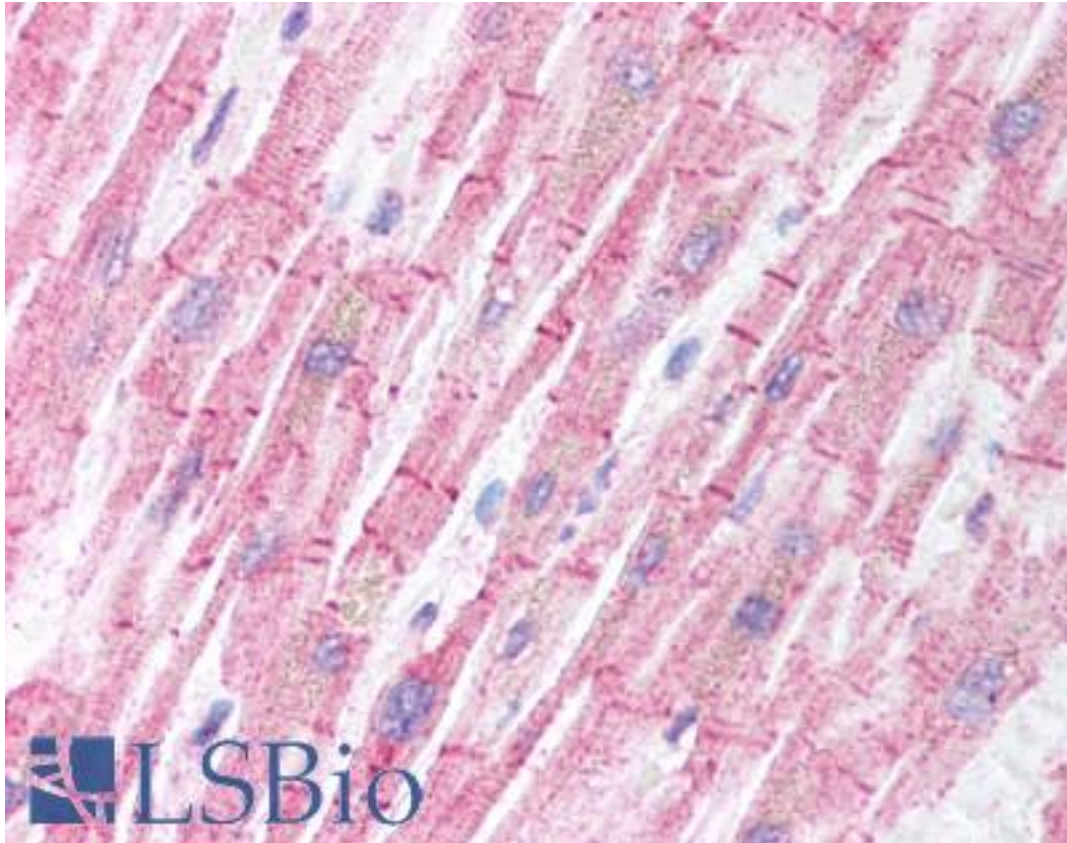


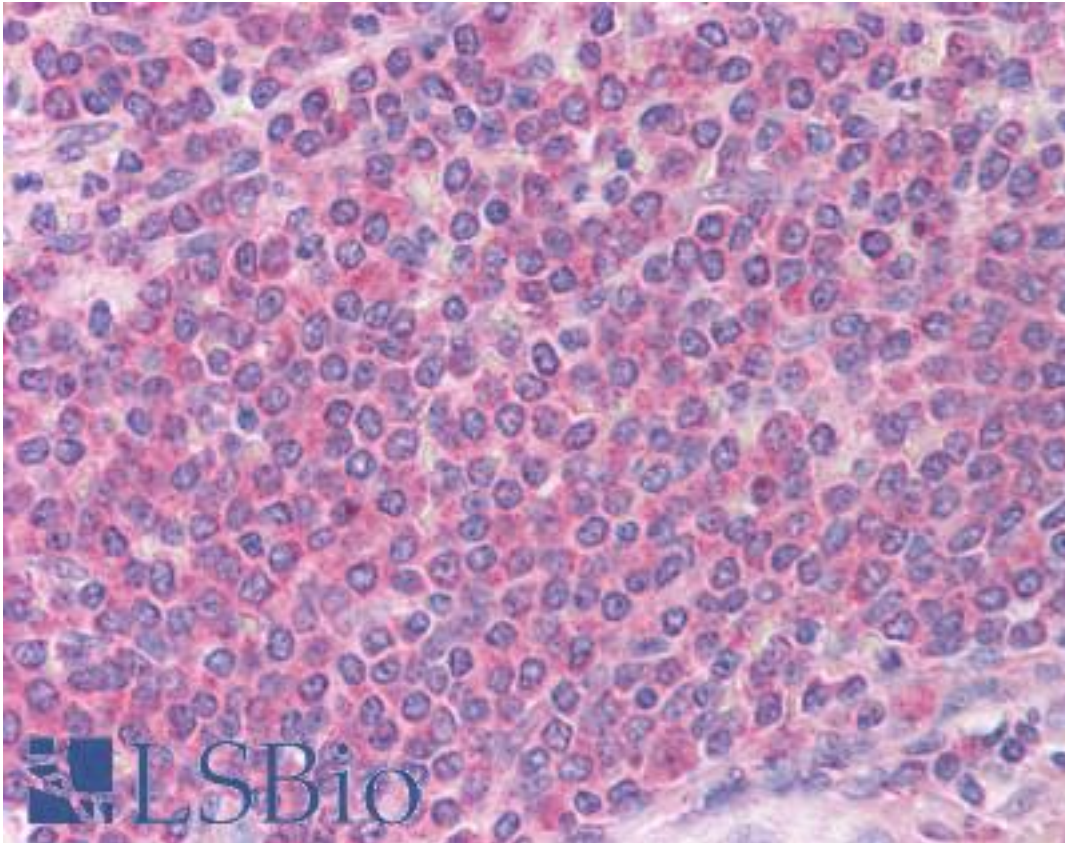
BCL2L11 / BIM Rabbit anti-Human Polyclonal (Internal) Antibody - LS-B1337 - LSBio	
CatalogID:	LS-B1337
Validation:	This antibody replaces catalog number LS-C459. It has been validated for use in the following assays: IHC.
Target:	BCL2-like 11 (apoptosis facilitator) (BCL2L11)
Synonyms:	BCL2L11 Antibody, BIM-alpha6 Antibody, BIM-beta7 Antibody, Bcl-2-like protein 11 Antibody, BIM-beta6 Antibody, BimL Antibody, BimS Antibody, Bcl-2 interacting protein Bim Antibody, BimEL Antibody, BAM Antibody, Bcl2-L-11 Antibody, BIM Antibody, BOD Antibody
Family / Subfamily:	Apoptosis
Host	BCL2L11 antibody was produced in Rabbit
Clonality:	Polyclonal
Immunogen Species:	BCL2L11 / BIM antibody was raised against Human
Antigen Type:	Synthetic peptide
Immunogen:	BCL2L11 / BIM antibody was raised against a peptide corresponding to amino acids near the center of human Bim The sequence is identical to that of mouse and rat.
Specificity:	peptide corresponding to amino acids near the center of human Bim The sequence is identical to that of mouse and rat
Epitope:	Internal
Reactivity:	Human, Mouse, Rat
Purification:	Immunoaffinity purified
Presentation:	PBS, 0.02% sodium azide.
Recommended Storage:	Short term 4°C, long term aliquot and store at -20°C, avoid freeze thaw cycles. Store undiluted.
Usage Summary:	Immunohistochemistry: LS-B1337 was validated for use in immunohistochemistry on a panel of 21 formalin-fixed, paraffin-embedded (FFPE) human tissues after heat induced antigen retrieval in pH 6.0 citrate buffer. After incubation with the primary antibody, slides were incubated with biotinylated secondary antibody, followed by alkaline phosphatase-streptavidin and chromogen. The stained slides were evaluated by a pathologist to confirm staining specificity. The optimal working concentration for LS-B1337 was determined to be 5 ug/ml.
Uses:	IHC - Paraffin (5 µg/ml), ICC, Western blot (2.5 µg/ml) (Optimal dilution to be determined by the researcher)
Size:	50 µg
Concentration:	1 mg/ml

Immunohistochemistry Image:



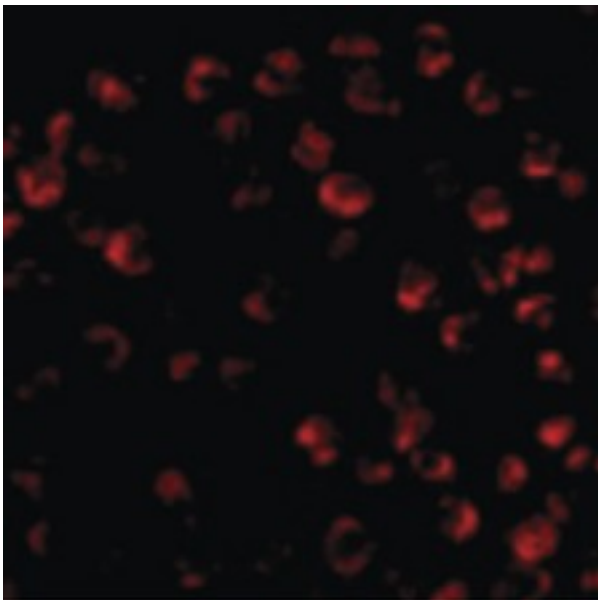
Anti-BCL2L1 / BIM antibody IHC of human heart. Immunohistochemistry of formalin-fixed, paraffin-embedded tissue after heat-induced antigen retrieval. Antibody LS-B1337 concentration 5 ug/ml.

Immunohistochemistry Image:



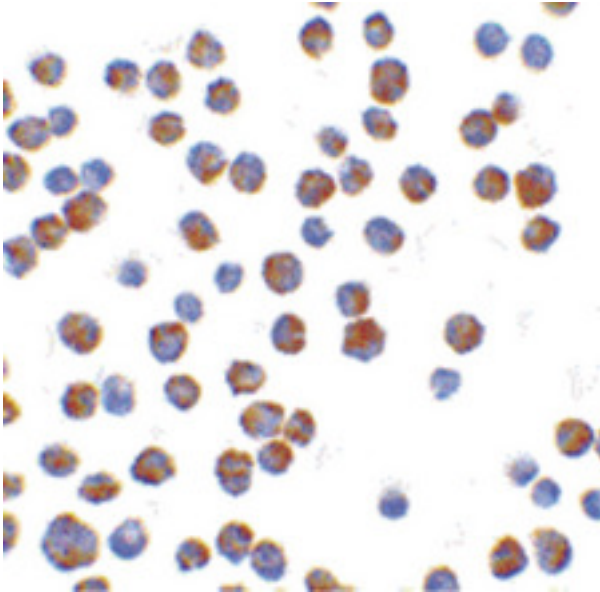
Anti-BCL2L1 / BIM antibody IHC of human spleen. Immunohistochemistry of formalin-fixed, paraffin-embedded tissue after heat-induced antigen retrieval. Antibody LS-B1337 concentration 5 ug/ml.

Immunofluorescence Image:



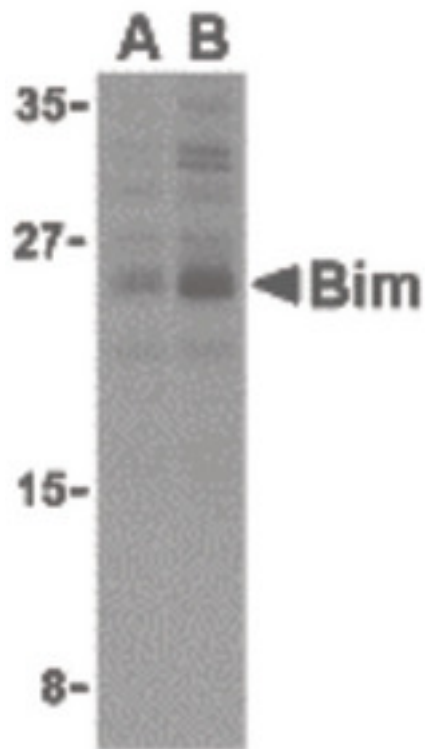
Immunofluorescence of Bim in K562 cells with Bim antibody at 20 ug/ml.

Immunocytochemistry Image:



Immunocytochemistry of BIM in K562 cells with Bim antibody at 10 ug/ml.

Western Blot Image:



Western blot of Bim in K562 cell lysates with Bim antibody (IN2) at (A) 2.5 and (B) 5 ug/ml.

Requested From:

Japan

Laboratory Reagent For In Vitro Research Use Only

Not for resale without prior written consent from LifeSpan BioSciences, Inc.

Created on 9/23/2014

© 2014 LifeSpan BioSciences