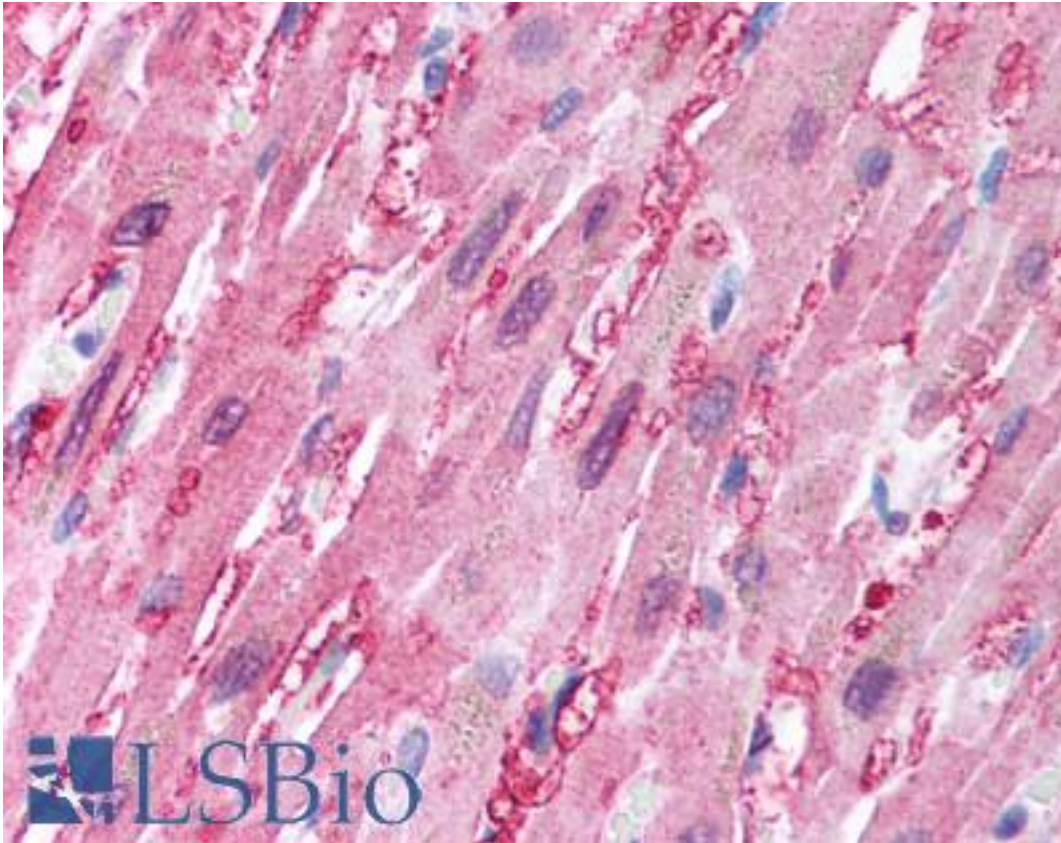


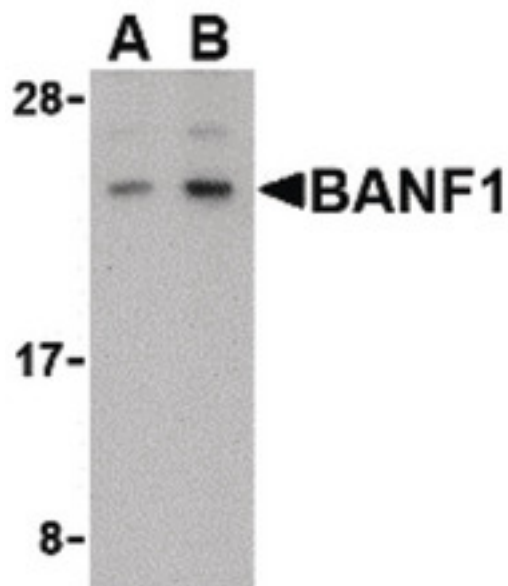
BANF1 / BAF / BCRP1 Rabbit anti-Human Polyclonal (C-Terminus) Antibody - LS-B1332 - LSBio	
CatalogID:	LS-B1332
Validation:	This antibody replaces catalog number LS-C19667. It has been validated for use in the following assays: IHC.
Target:	barrier to autointegration factor 1 (BANF1)
Synonyms:	BANF1 Antibody, BCRG1 Antibody, BCRP1 Antibody, NGPS Antibody, BAF Antibody, D14S1460 Antibody
Host	BANF1 antibody was produced in Rabbit
Clonality:	Polyclonal
Immunogen Species:	BANF1 / BAF / BCRP1 antibody was raised against Human
Antigen Type:	Synthetic peptide
Immunogen:	BANF1 / BAF / BCRP1 antibody was raised against a 15 amino acid peptide from near the carboxy terminus of human BANF1.
Specificity:	15 amino acid peptide from near the carboxy terminus of human BANF1.
Epitope:	C-Terminus
Reactivity:	Human, Mouse
Purification:	Immunoaffinity purified
Presentation:	PBS, 0.02% sodium azide.
Recommended Storage:	Short term 4°C, long term aliquot and store at -20°C, avoid freeze thaw cycles. Store undiluted.
Usage Summary:	Immunohistochemistry: LS-B1332 was validated for use in immunohistochemistry on a panel of 21 formalin-fixed, paraffin-embedded (FFPE) human tissues after heat induced antigen retrieval in pH 6.0 citrate buffer. After incubation with the primary antibody, slides were incubated with biotinylated secondary antibody, followed by alkaline phosphatase-streptavidin and chromogen. The stained slides were evaluated by a pathologist to confirm staining specificity. The optimal working concentration for LS-B1332 was determined to be 5 ug/ml.
Uses:	IHC - Paraffin (5 µg/ml), Immunofluorescence (5 µg/ml), Western blot (0.5 - 1 µg/ml) (Optimal dilution to be determined by the researcher)
Size:	50 µg
Concentration:	1 mg/ml

Immunohistochemistry Image:



Anti-BANF1 antibody IHC of human heart. Immunohistochemistry of formalin-fixed, paraffin-embedded tissue after heat-induced antigen retrieval. Antibody LS-B1332 concentration 5 ug/ml.

Western Blot Image:



Western blot of BANF1 in human kidney tissue lysate with BANF1 antibody at (A) 0.5 and (B) 1 ug/ml.

Requested From:	Japan
Laboratory Reagent For In Vitro Research Use Only	
Not for resale without prior written consent from LifeSpan BioSciences, Inc.	
Created on 9/23/2014	
© 2014 LifeSpan BioSciences	