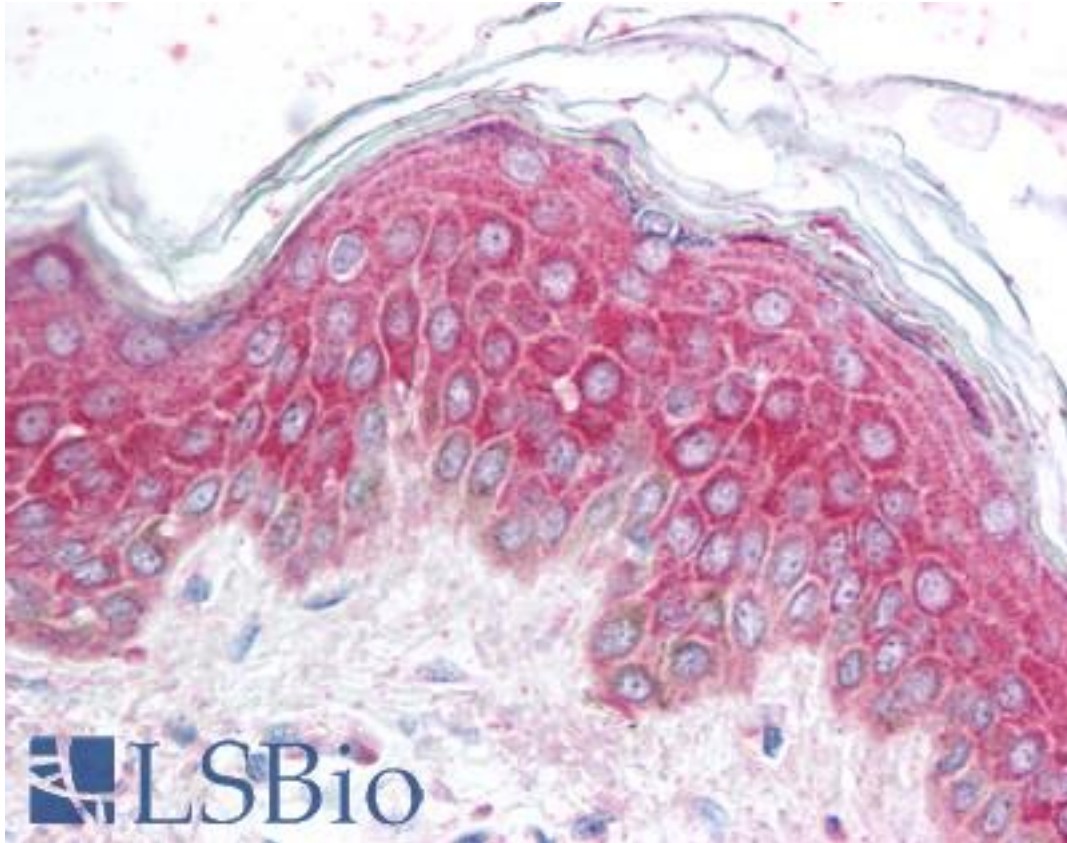


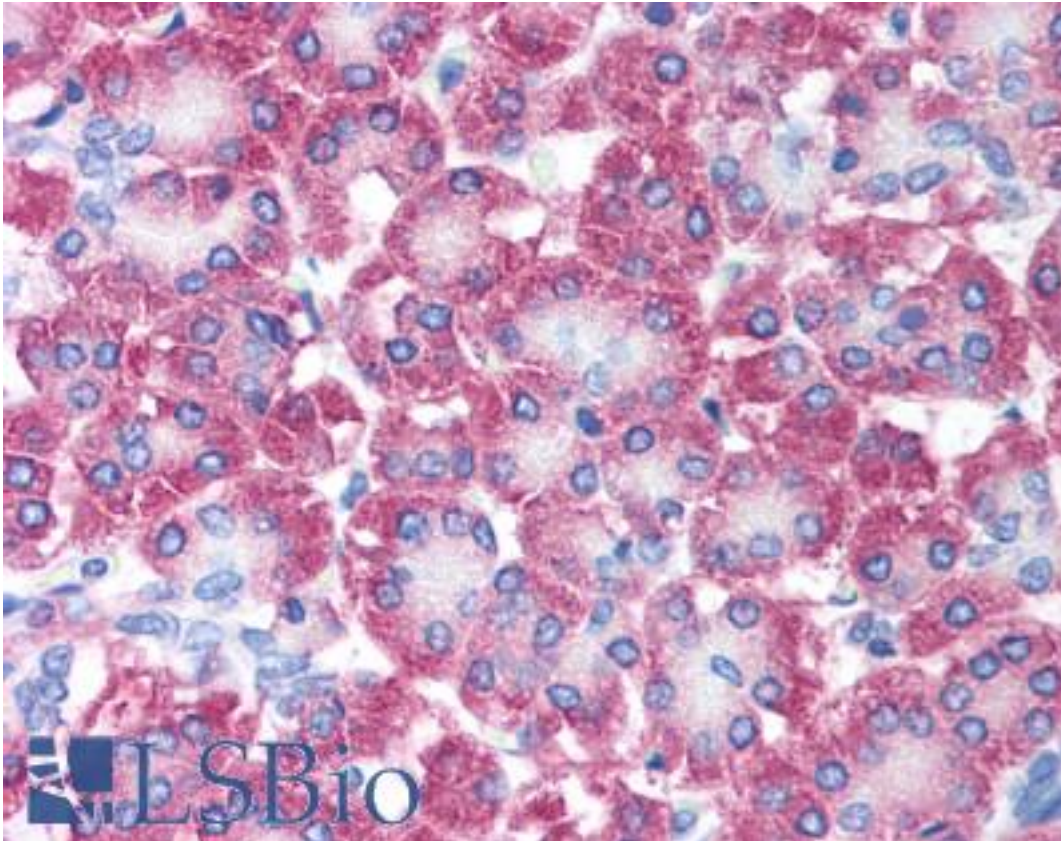
AVEN / PDCD12 Rabbit anti-Human Polyclonal (N-Terminus) Antibody - LS-B1330 - LSBio	
CatalogID:	LS-B1330
Validation:	This antibody replaces catalog number LS-C19456. It has been validated for use in the following assays: IHC.
Target:	apoptosis, caspase activation inhibitor (AVEN)
Synonyms:	AVEN Antibody, Cell death regulator Aven Antibody, Programmed cell death 12 Antibody, PDCD12 Antibody
Host	AVEN antibody was produced in Rabbit
Clonality:	Polyclonal
Immunogen Species:	AVEN / PDCD12 antibody was raised against Human
Antigen Type:	Synthetic peptide
Immunogen:	AVEN / PDCD12 antibody was raised against a 18 amino acid peptide from near the amino terminus of human Aven.
Specificity:	18 amino acid peptide from near the amino terminus of human Aven
Epitope:	N-Terminus
Reactivity:	Human, Mouse, Rat
Purification:	Purified
Presentation:	PBS, 0.02% sodium azide.
Recommended Storage:	Short term 4°C, long term aliquot and store at -20°C, avoid freeze thaw cycles. Store undiluted.
Usage Summary:	Immunohistochemistry: LS-B1330 was validated for use in immunohistochemistry on a panel of 21 formalin-fixed, paraffin-embedded (FFPE) human tissues after heat induced antigen retrieval in pH 6.0 citrate buffer. After incubation with the primary antibody, slides were incubated with biotinylated secondary antibody, followed by alkaline phosphatase-streptavidin and chromogen. The stained slides were evaluated by a pathologist to confirm staining specificity. The optimal working concentration for LS-B1330 was determined to be 5 ug/ml.
Uses:	IHC - Paraffin (5 µg/ml), Western blot (0.5 - 1 µg/ml) (Optimal dilution to be determined by the researcher)
Size:	50 µg
Concentration:	0.5 mg/ml

Immunohistochemistry Image:



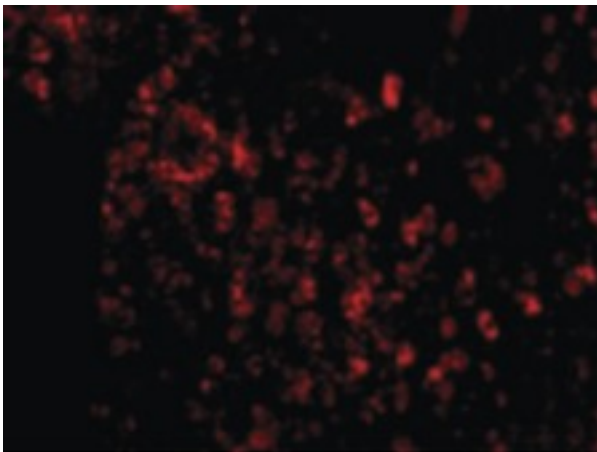
Anti-AVEN antibody IHC of human skin. Immunohistochemistry of formalin-fixed, paraffin-embedded tissue after heat-induced antigen retrieval. Antibody LS-B1330 concentration 5 ug/ml.

Immunohistochemistry Image:



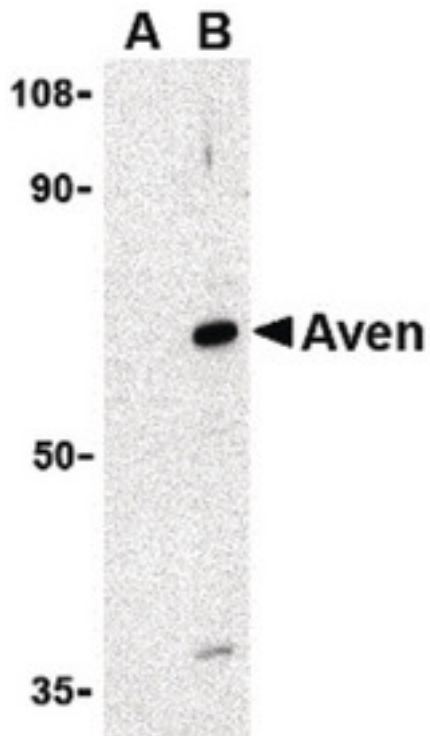
Anti-AVEN antibody IHC of human pancreas. Immunohistochemistry of formalin-fixed, paraffin-embedded tissue after heat-induced antigen retrieval. Antibody LS-B1330 concentration 5 µg/ml.

Immunofluorescence Image:



Immunofluorescence of AVEN in Human Spleen cells with AVEN antibody at 20 µg/ml.

Western Blot Image:



Western blot of Aven in Raji cell lysate with Aven antibody at 1 ug/ml in (A) the presence and (B) the absence of blocking peptide.

Requested From:

Japan

Laboratory Reagent For In Vitro Research Use Only

Not for resale without prior written consent from LifeSpan BioSciences, Inc.

Created on 9/23/2014

© 2014 LifeSpan BioSciences