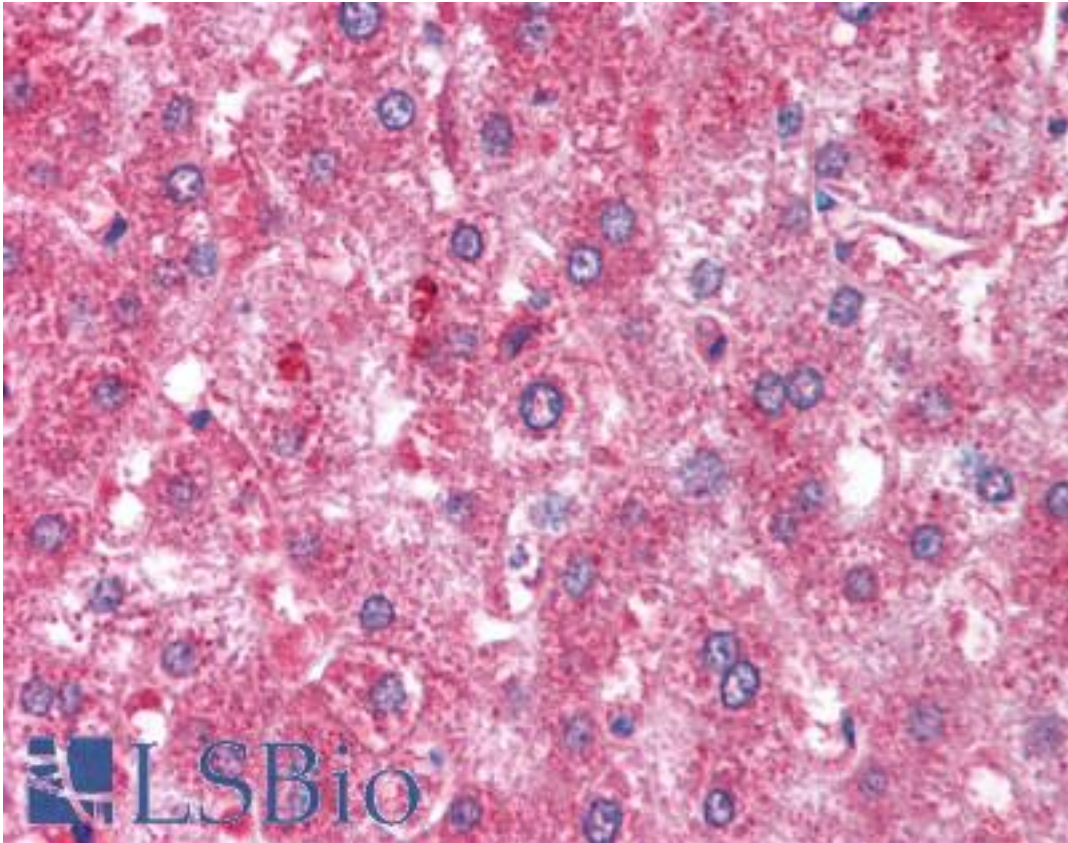


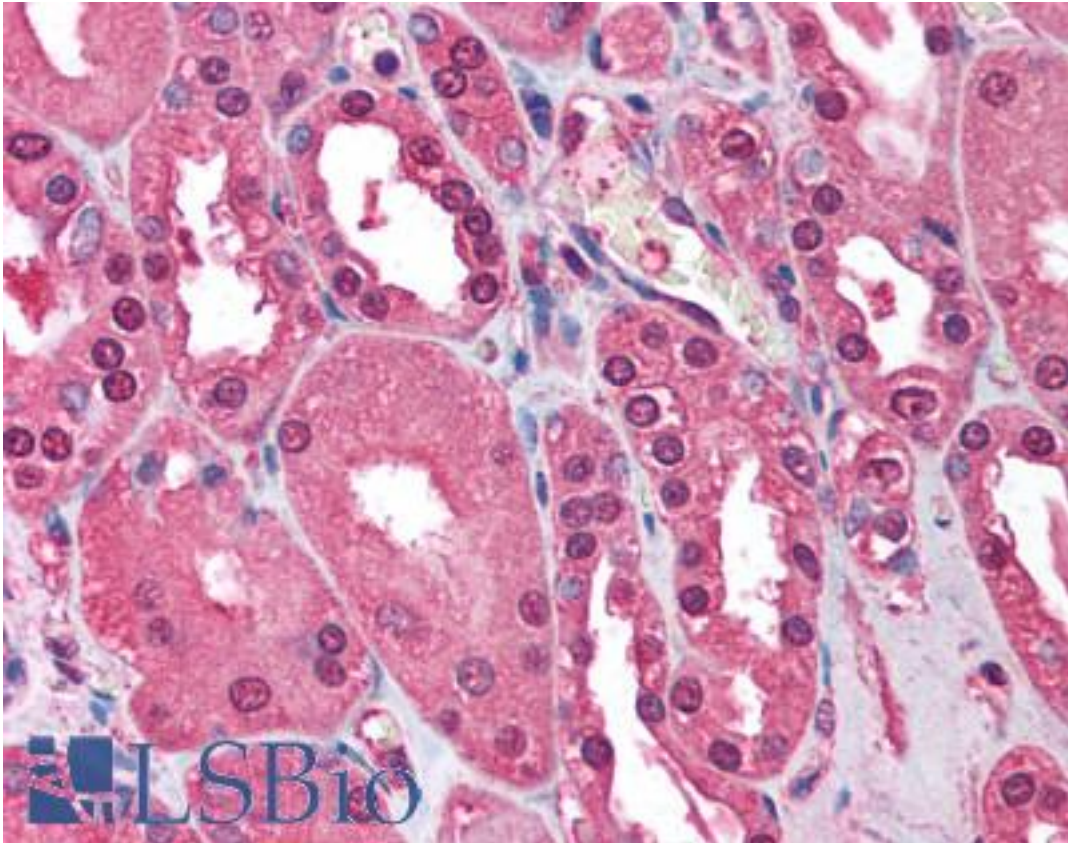
ATM Rabbit anti-Human Polyclonal (C-Terminus) Antibody - LS-B1329 - LSBio	
<b>CatalogID:</b>	LS-B1329
<b>Validation:</b>	This antibody replaces catalog number LS-C19640. It has been validated for use in the following assays: IHC.
<b>Target:</b>	ataxia telangiectasia mutated (ATM)
<b>Synonyms:</b>	ATM Antibody, A-T mutated Antibody, ATA Antibody, ATC Antibody, ATD Antibody, ATE Antibody, AT mutated Antibody, Ataxia telangiectasia Antibody, ATDC Antibody, Serine-protein kinase ATM Antibody, AT1 Antibody, Ataxia telangiectasia mutated Antibody, TEL1 Antibody, TELO1 Antibody
<b>Family / Subfamily:</b>	Protein Kinase / PI3/PI4
<b>Host</b>	ATM antibody was produced in Rabbit
<b>Clonality:</b>	Polyclonal
<b>Immunogen Species:</b>	ATM antibody was raised against Human
<b>Antigen Type:</b>	Synthetic peptide
<b>Immunogen:</b>	ATM antibody was raised against a peptide corresponding to 14 amino acids near the carboxy terminus of human ATM.
<b>Specificity:</b>	peptide corresponding to 14 amino acids near the carboxy terminus of human ATM
<b>Epitope:</b>	C-Terminus
<b>Reactivity:</b>	Human
<b>Purification:</b>	Immunoaffinity purified
<b>Presentation:</b>	PBS, 0.02% sodium azide.
<b>Recommended Storage:</b>	Short term 4°C, long term aliquot and store at -20°C, avoid freeze thaw cycles. Store undiluted.
<b>Usage Summary:</b>	Immunohistochemistry: LS-B1329 was validated for use in immunohistochemistry on a panel of 21 formalin-fixed, paraffin-embedded (FFPE) human tissues after heat induced antigen retrieval in pH 6.0 citrate buffer. After incubation with the primary antibody, slides were incubated with biotinylated secondary antibody, followed by alkaline phosphatase-streptavidin and chromogen. The stained slides were evaluated by a pathologist to confirm staining specificity. The optimal working concentration for LS-B1329 was determined to be 1-2 ug/ml.
<b>Uses:</b>	IHC - Paraffin (1 - 2 µg/ml), Western blot (Optimal dilution to be determined by the researcher)
<b>Size:</b>	50 µg
<b>Concentration:</b>	1 mg/ml

**Immunohistochemistry Image:**



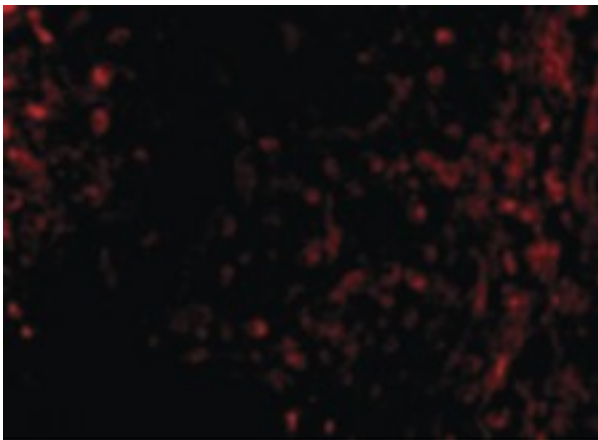
Anti-ATM antibody IHC of human liver. Immunohistochemistry of formalin-fixed, paraffin-embedded tissue after heat-induced antigen retrieval. Antibody LS-B1329 concentration 2 ug/ml.

**Immunohistochemistry Image:**



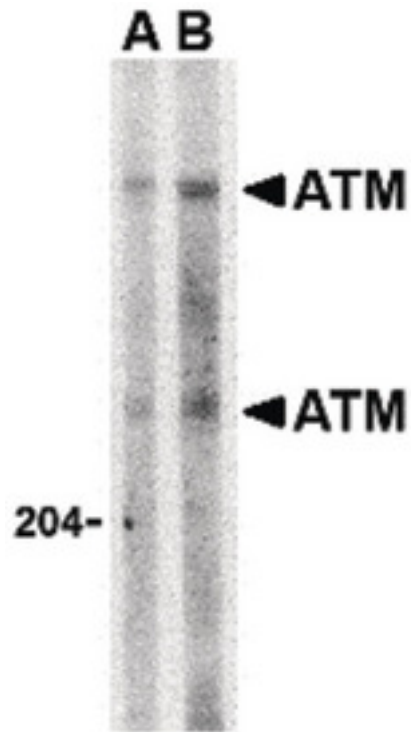
Anti-ATM antibody IHC of human kidney. Immunohistochemistry of formalin-fixed, paraffin-embedded tissue after heat-induced antigen retrieval. Antibody LS-B1329 concentration 2 ug/ml.

**Immunofluorescence Image:**



Immunofluorescence of ATM in Human Lymph Node cells with ATM antibody at 10 ug/ml.

**Western Blot Image:**



Western blot of ATM in Daudi whole cell lysate with ATM antibody at (A) 1 and (B) 2 ug/ml.

**Requested From:**

Japan

Laboratory Reagent For In Vitro Research Use Only

Not for resale without prior written consent from LifeSpan BioSciences, Inc.

Created on 9/23/2014

© 2014 LifeSpan BioSciences