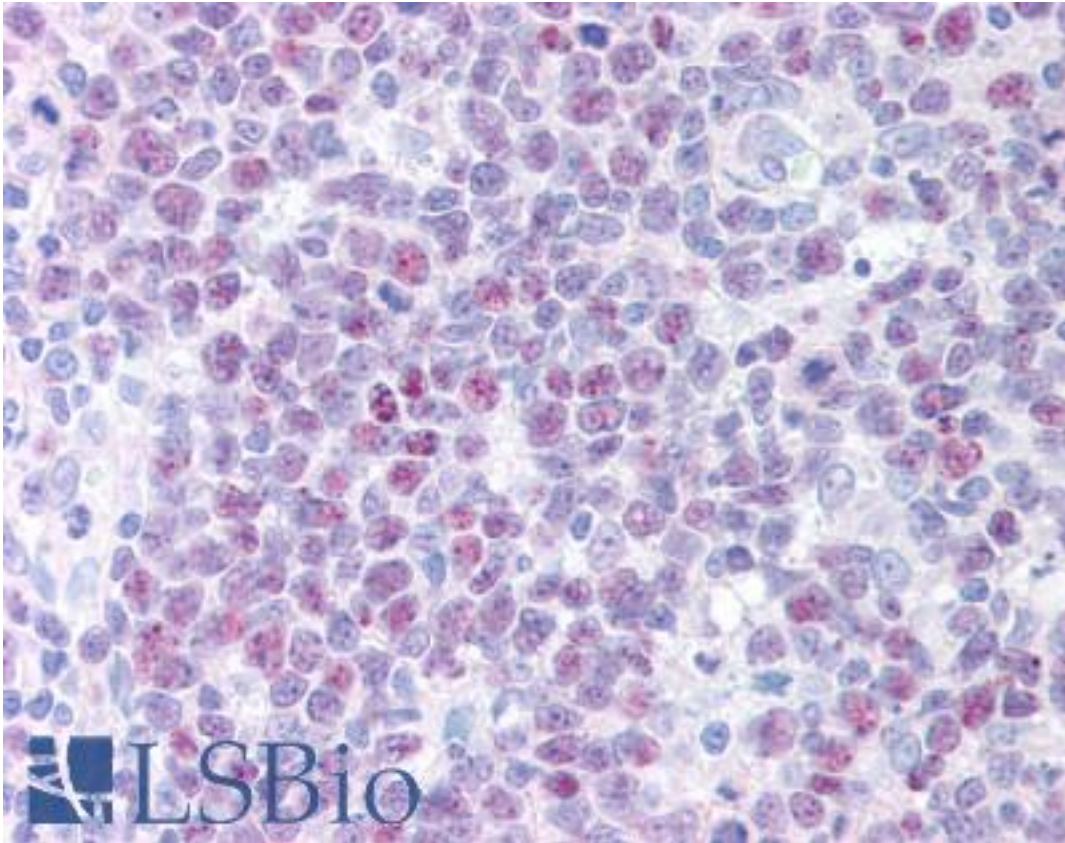


**POLD1 Mouse anti-Human Monoclonal (aa1-140) (607) Antibody - LS-B1325 - LSBio**

<b>CatalogID:</b>	LS-B1325
<b>Validation:</b>	This antibody replaces catalog number LS-C19968. It has been validated for use in the following assays: IHC.
<b>Target:</b>	polymerase (DNA directed), delta 1, catalytic subunit (POLD1)
<b>Synonyms:</b>	POLD1 Antibody, CDC2 Antibody, CDC2 homolog Antibody, POLD Antibody
<b>Host</b>	POLD1 antibody was produced in Mouse
<b>Clonality:</b>	Monoclonal
<b>Isotype:</b>	IgG
<b>Clone Name:</b>	607
<b>Immunogen Species:</b>	POLD1 antibody was raised against Human
<b>Immunogen:</b>	POLD1 antibody was raised against recombinant human POLD1.
<b>Specificity:</b>	Recombinant protein encoding amino acids 1-140 of the large subunit of human DNA polymerase d.
<b>Epitope:</b>	aa1-140
<b>Reactivity:</b>	Human
<b>Purification:</b>	Protein G purified
<b>Presentation:</b>	PBS. Sourced in TCS.
<b>Recommended Storage:</b>	Long term: -20°C; Short term: +4°C. Avoid repeat freeze-thaw cycles.
<b>Usage Summary:</b>	Immunohistochemistry: LS-B1325 was validated for use in immunohistochemistry on a panel of 21 formalin-fixed, paraffin-embedded (FFPE) human tissues after heat induced antigen retrieval in pH 6.0 citrate buffer. After incubation with the primary antibody, slides were incubated with biotinylated secondary antibody, followed by alkaline phosphatase-streptavidin and chromogen. The stained slides were evaluated by a pathologist to confirm staining specificity. The optimal working concentration for LS-B1325 was determined to be 10 ug/ml.
<b>Uses:</b>	IHC - Paraffin (10 µg/ml), Western blot (Optimal dilution to be determined by the researcher)
<b>Size:</b>	50 µg
<b>Concentration:</b>	1 mg/ml

**Immunohistochemistry Image:**



Anti-POLD1 antibody IHC of human tonsil. Immunohistochemistry of formalin-fixed, paraffin-embedded tissue after heat-induced antigen retrieval. Antibody LS-B1325 concentration 10 ug/ml.

**Requested From:**

Japan

Laboratory Reagent For In Vitro Research Use Only

Not for resale without prior written consent from LifeSpan BioSciences, Inc.

Created on 9/23/2014

© 2014 LifeSpan BioSciences