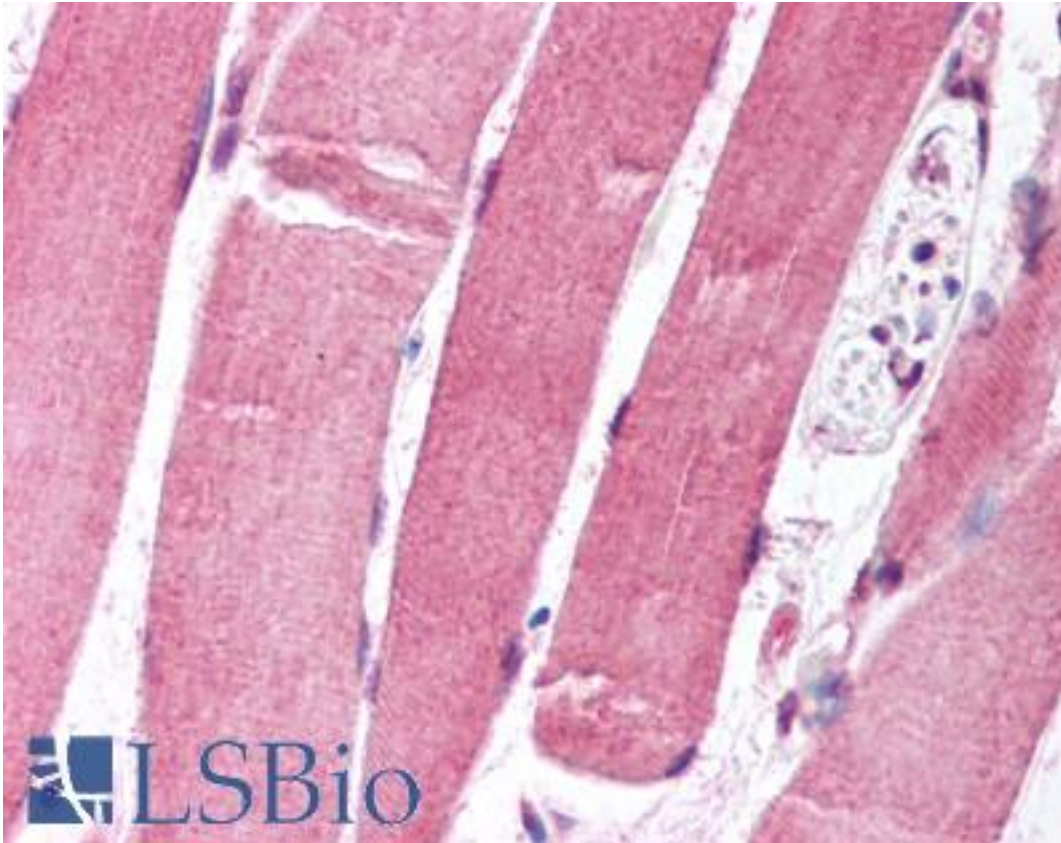


FOXO1 / FKHR Mouse anti-Human Monoclonal (aa242-655) (7h3) Antibody - LS-B1322 - LSBio	
CatalogID:	LS-B1322
Validation:	This antibody replaces catalog number LS-C20003. It has been validated for use in the following assays: IHC-P.
Target:	forkhead box O1 (FOXO1)
Synonyms:	FOXO1 Antibody, FKHR Antibody, Forkhead in rhabdomyosarcoma Antibody, FOXO1A Antibody, FKH1 Antibody, Forkhead box protein O1 Antibody, Forkhead box protein O1A Antibody, Forkhead box O1 Antibody, Forkhead box o1a Antibody, Forkhead domain protein fkhr Antibody
Family / Subfamily:	Transcription factor / not assigned-Transcription factor
Host	FOXO1 antibody was produced in Mouse
Clonality:	Monoclonal
Isotype:	IgG1
Clone Name:	7h3
Immunogen Species:	FOXO1 / FKHR antibody was raised against Human
Immunogen:	FOXO1 / FKHR antibody was raised against fusion protein from human FOXO1.
Specificity:	Fusion protein containing the region encoding aa 242-655 of human FKHR expressed in E. coli.
Epitope:	aa242-655
Reactivity:	Human
Purification:	Protein G purified
Presentation:	PBS, pH 7.2. No preservatives added. Sourced in TCS.
Recommended Storage:	Long term: -20°C; Short term: +4°C. Avoid repeat freeze-thaw cycles.
Usage Summary:	Immunohistochemistry: LS-B1322 was validated for use in immunohistochemistry on a panel of 21 formalin-fixed, paraffin-embedded (FFPE) human tissues after heat induced antigen retrieval in pH 6.0 citrate buffer. After incubation with the primary antibody, slides were incubated with biotinylated secondary antibody, followed by alkaline phosphatase-streptavidin and chromogen. The stained slides were evaluated by a pathologist to confirm staining specificity. The optimal working concentration for LS-B1322 was determined to be 10 ug/ml.
Uses:	IHC - Paraffin (10 µg/ml), Western blot (0.1 - 2 µg/ml) (Optimal dilution to be determined by the researcher)
Size:	50 µg
Concentration:	1 mg/ml

Immunohistochemistry Image:



Anti-FOXO1 antibody IHC of human skeletal muscle. Immunohistochemistry of formalin-fixed, paraffin-embedded tissue after heat-induced antigen retrieval. Antibody LS-B1322 concentration 10 ug/ml.

Requested From:

Japan

Laboratory Reagent For In Vitro Research Use Only

Not for resale without prior written consent from LifeSpan BioSciences, Inc.

Created on 9/23/2014

© 2014 LifeSpan BioSciences