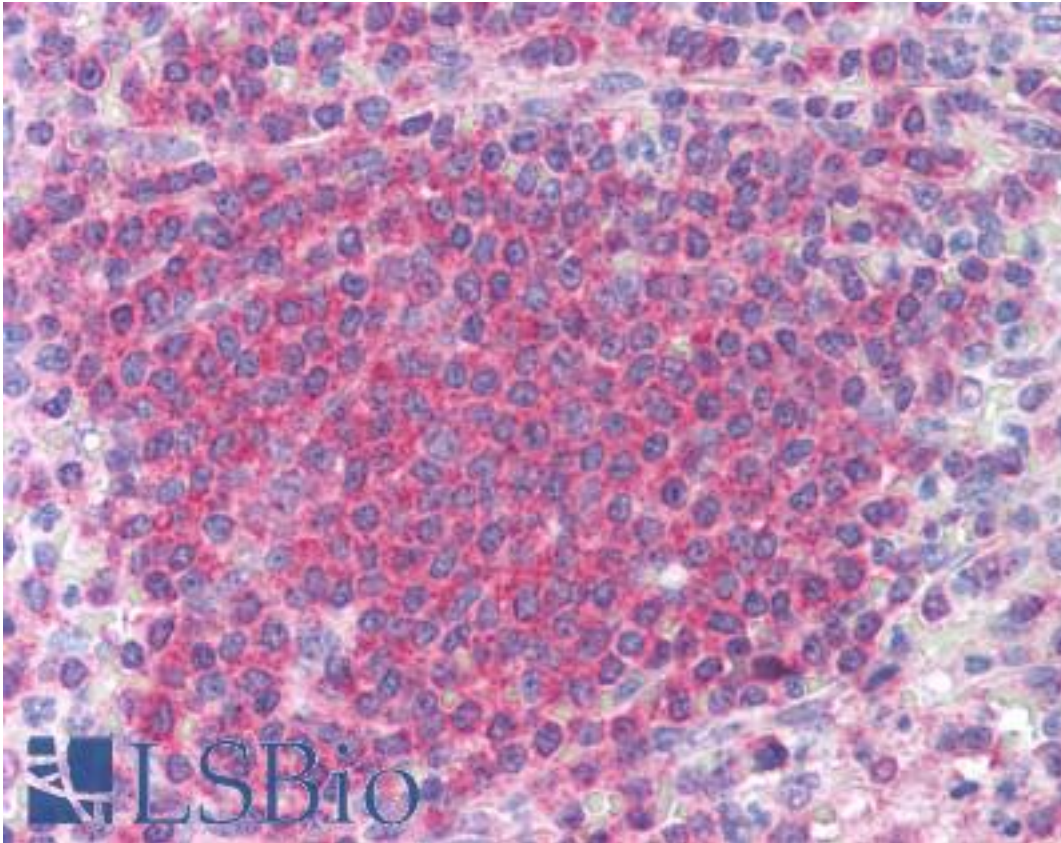


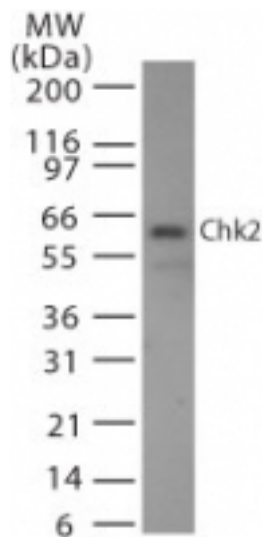
CHEK2 / CHK2 Mouse anti-Human Monoclonal (73C175.1.1) Antibody - LS-B1321 - LSBio	
CatalogID:	LS-B1321
Validation:	This antibody replaces catalog number LS-C508. It has been validated for use in the following assays: IHC.
Target:	checkpoint kinase 2 (CHEK2)
Synonyms:	CHEK2 Antibody, BA444G7 Antibody, Cds1 homolog Antibody, Checkpoint kinase 2 Antibody, Checkpoint-like protein CHK2 Antibody, CHK2 checkpoint homolog Antibody, CHK2 Antibody, HCds1 Antibody, LFS2 Antibody, RAD53 Antibody, Rad53 homolog Antibody, HCHK2 Antibody, HuCds1 Antibody, PP1425 Antibody
Family / Subfamily:	Protein Kinase / CDS1
Host	CHEK2 antibody was produced in Mouse
Clonality:	Monoclonal
Isotype:	IgG1
Clone Name:	73C175.1.1
Immunogen Species:	CHEK2 / CHK2 antibody was raised against Human
Antigen Type:	Synthetic peptide
Immunogen:	CHEK2 / CHK2 antibody was raised against synthetic peptide from human CHEK2 / CHK2.
Specificity:	A synthetic peptide obtained from human Chk2 protein sequence was used as immunogen.
Reactivity:	Human
Purification:	Protein G purified
Presentation:	PBS, 0.02% sodium azide.
Recommended Storage:	Long term: -70°C; Short term: +4°C
Usage Summary:	Immunohistochemistry: LS-B1321 was validated for use in immunohistochemistry on a panel of 21 formalin-fixed, paraffin-embedded (FFPE) human tissues after heat induced antigen retrieval in pH 6.0 citrate buffer. After incubation with the primary antibody, slides were incubated with biotinylated secondary antibody, followed by alkaline phosphatase-streptavidin and chromogen. The stained slides were evaluated by a pathologist to confirm staining specificity. The optimal working concentration for LS-B1321 was determined to be 10 ug/ml.
Uses:	IHC - Paraffin (10 µg/ml), Western blot (2 µg/ml) (Optimal dilution to be determined by the researcher)
Size:	50 µg

Immunohistochemistry Image:



Anti-CHEK2 / CHK2 antibody IHC of human spleen. Immunohistochemistry of formalin-fixed, paraffin-embedded tissue after heat-induced antigen retrieval. Antibody LS-B1321 concentration 10 ug/ml.

Western Blot Image:



Western blot of Chk2 in 293 cell lysate. A protein band of approximate molecular weight of 60-62 kDa is detected with antibody at 2 ug/ml.

Requested From:

Japan

Laboratory Reagent For In Vitro Research Use Only

Not for resale without prior written consent from LifeSpan BioSciences, Inc.

Created on 9/23/2014

© 2014 LifeSpan BioSciences