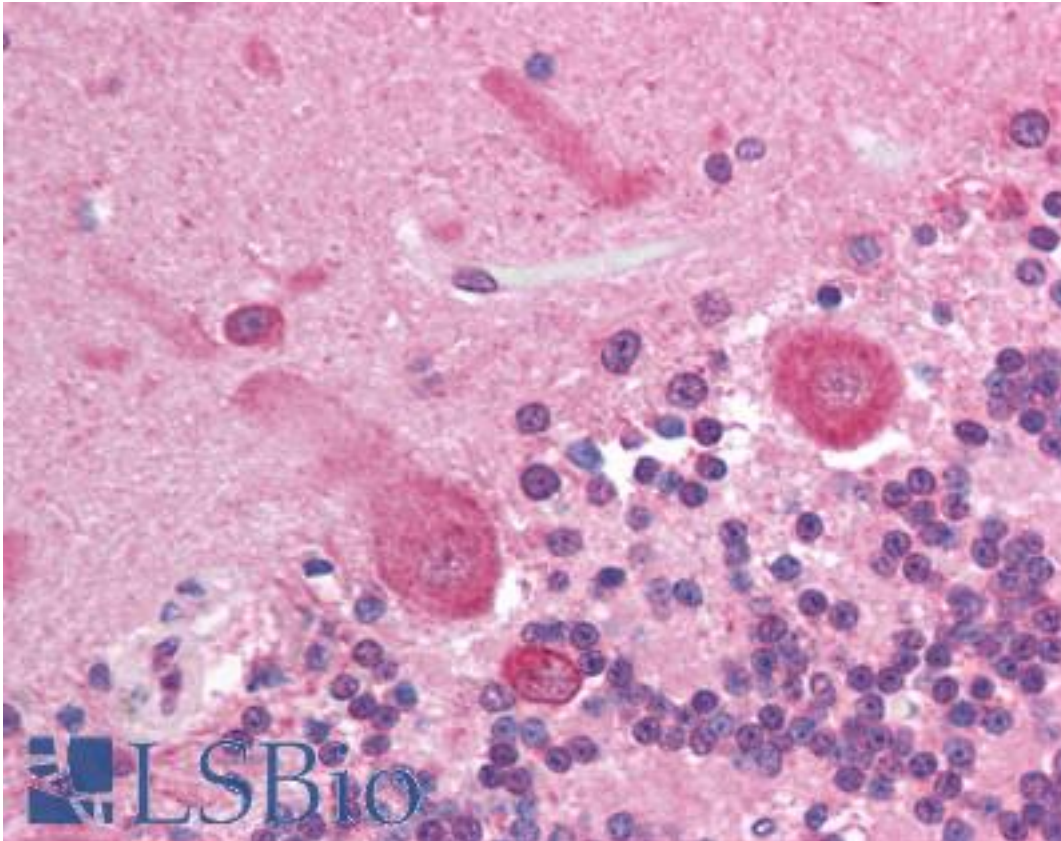


AKT3 Mouse anti-Human Monoclonal (aa119-136) (66C1247.1) Antibody - LS-B1319 - LSBio	
CatalogID:	LS-B1319
Validation:	This antibody replaces catalog number LS-C497. It has been validated for use in the following assays: IHC.
Target:	v-akt murine thymoma viral oncogene homolog 3 (AKT3)
Synonyms:	AKT3 Antibody, AKT3/PKBgamma Antibody, PRKBG Antibody, PKB gamma Antibody, Protein kinase Akt-3 Antibody, RAC-gamma Antibody, MPPH Antibody, PKB-GAMMA Antibody, PKBG Antibody, Protein kinase B gamma Antibody, RAC-PK-gamma Antibody, STK-2 Antibody
Family / Subfamily:	Protein Kinase / RAC/AKT
Host	AKT3 antibody was produced in Mouse
Clonality:	Monoclonal
Isotype:	IgG1
Clone Name:	66C1247.1
Immunogen Species:	AKT3 antibody was raised against Human
Antigen Type:	Synthetic peptide
Immunogen:	AKT3 antibody was raised against a synthetic peptide corresponding to amino acid residues 119-136 (CSPTSQIDNIGEEEMDAS) of human AKT3, GenBank no. gi 4574744 gb AAD24196.1 AF135794_1. This sequence is identical in human, mouse, rat, cow, dog, and chicken. Percent identity by BLAST analysis: Human, Gorilla, Gibbon, Monkey, Marmoset, Mouse, Rat, Bovine, Dog, Bat, Elephant, Panda, Horse, Rabbit, Pig, Opossum, Turkey, Chicken, Platypus (100%); Hamster (94%); Zebrafish (89%).
Specificity:	A synthetic peptide corresponding to amino acid residues 119-136 (CSPTSQIDNIGEEEMDAS) of human Akt3, GenBank no. gi 4574744 gb AAD24196.1 AF135794_1. This sequence is identical in human, mouse, rat, cow, dog, and chicken.
Epitope:	aa119-136
Reactivity:	Human, Gorilla, Gibbon, Monkey, Mouse, Rat, Bat, Bovine, Dog, Horse, Pig, Rabbit, Chicken
Predicted Reactivity:	Hamster
Purification:	Protein G purified
Presentation:	PBS, 0.05% BSA, 0.05% sodium azide. Sourced in TCS.
Recommended Storage:	Long term: -20°C; Short term: +4°C; Avoid freeze-thaw cycles.
Usage Summary:	Immunohistochemistry: LS-B1319 was validated for use in immunohistochemistry on a panel of 21 formalin-fixed, paraffin-embedded (FFPE) human tissues after heat induced antigen retrieval in pH 6.0 citrate buffer. After incubation with the primary antibody, slides were incubated with biotinylated secondary antibody, followed by alkaline phosphatase-streptavidin and chromogen. The stained slides were evaluated by a pathologist to confirm staining specificity. The optimal working concentration for LS-B1319 was determined to be 10 ug/ml.

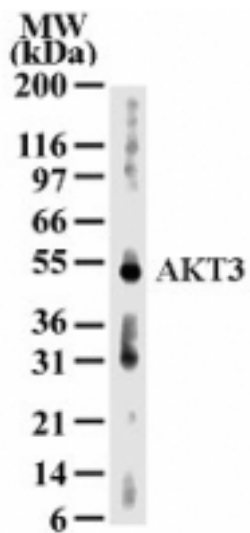
Uses:	IHC - Paraffin (10 µg/ml), Western blot (1 - 2 µg/ml) (Optimal dilution to be determined by the researcher)
Size:	50 µg
Concentration:	0.5 mg/ml

Immunohistochemistry Image:



Anti-AKT3 antibody IHC of human brain, cerebellum. Immunohistochemistry of formalin-fixed, paraffin-embedded tissue after heat-induced antigen retrieval. Antibody LS-B1319 concentration 10 ug/ml.

Western Blot Image:



Western blot analysis for AKT3 using antibody at 2 ug/ml dilution against 30 ug/lane of human kidney lysate .

Requested From:

Japan

Laboratory Reagent For In Vitro Research Use Only

Not for resale without prior written consent from LifeSpan BioSciences, Inc.

Created on 9/23/2014

© 2014 LifeSpan BioSciences