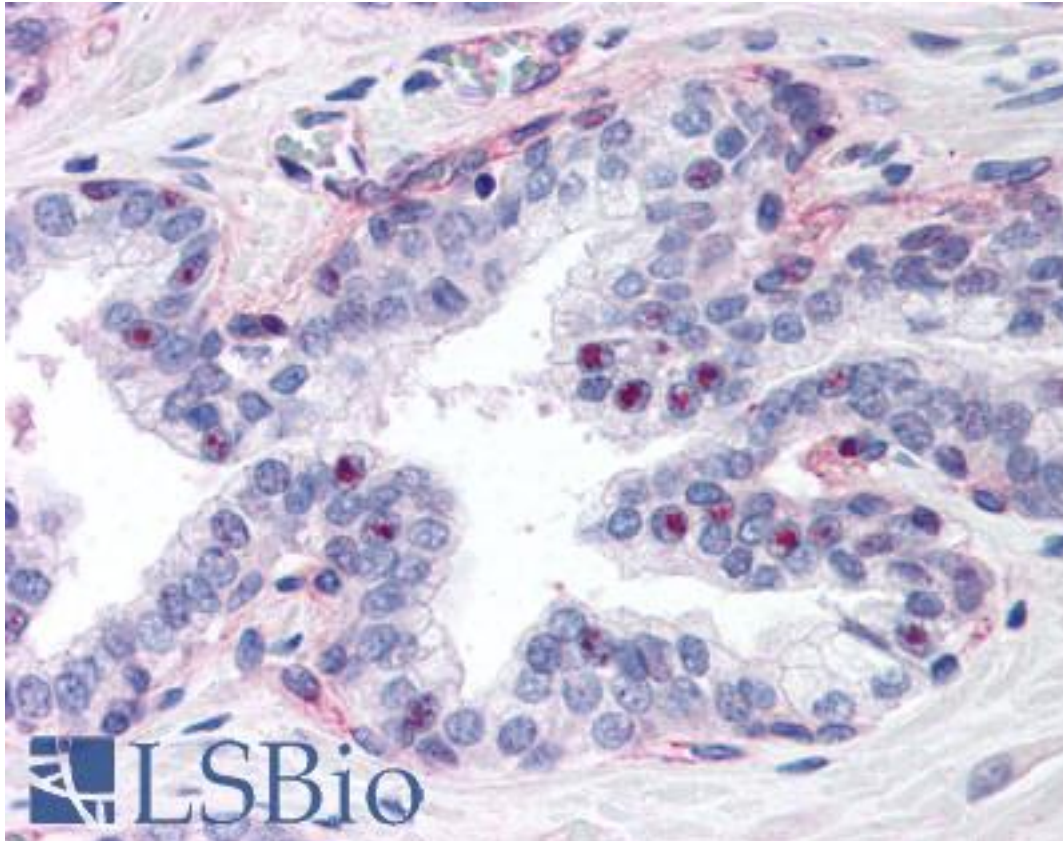


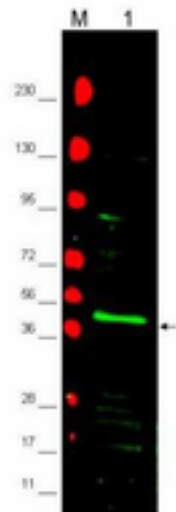
PPARG / PPAR Gamma Rabbit anti-Human Polyclonal (N-Terminus) Antibody - LS-B130 - LSBio	
CatalogID:	LS-B130
Validation:	This antibody replaces catalog number LS-C18860. It has been validated for use in the following assays: IHC.
Target:	peroxisome proliferator-activated receptor gamma (PPARG)
Synonyms:	PPARG Antibody, NR1C3 Antibody, PPAR gamma Antibody, PPAR gamma 2 Antibody, PPARG1 Antibody, PPARG2 Antibody, PPARgamma Antibody, CIMT1 Antibody, GLM1 Antibody, PPAR-gamma Antibody
Family / Subfamily:	NHR / NR1 Thyroid hormone-like
Host	PPARG antibody was produced in Rabbit
Clonality:	Polyclonal
Immunogen Species:	PPARG / PPAR Gamma antibody was raised against Human
Antigen Type:	Synthetic peptide
Immunogen:	PPARG / PPAR Gamma antibody was raised against synthetic peptide from human PPARG.
Specificity:	A region near the amino terminus of human PPAR gamma 2.
Epitope:	N-Terminus
Reactivity:	Human, Macaque
Purification:	Immunoaffinity purified
Presentation:	0.02 M potassium phosphate, 0.15 M sodium chloride, pH 7.2, 0.01% sodium azide.
Recommended Storage:	Long term: -20°C; Short term: +4°C. Avoid repeat freeze-thaw cycles.
Usage Summary:	Immunohistochemistry: LS-B130 was validated for use in immunohistochemistry on a panel of 21 formalin-fixed, paraffin-embedded (FFPE) human tissues after heat induced antigen retrieval in pH 6.0 citrate buffer. After incubation with the primary antibody, slides were incubated with biotinylated secondary antibody, followed by alkaline phosphatase-streptavidin and chromogen. The stained slides were evaluated by a pathologist to confirm staining specificity. The optimal working concentration for LS-B130 was determined to be 2.5 ug/ml.
Uses:	IHC - Paraffin (2.5 µg/ml), Western blot (1:1000 - 1:3000), ELISA (1:3200 - 1:10000) (Optimal dilution to be determined by the researcher)
Size:	50 µg
Concentration:	1 mg/ml

Immunohistochemistry Image:



Anti-PPARG antibody IHC of human prostate. Immunohistochemistry of formalin-fixed, paraffin-embedded tissue after heat-induced antigen retrieval. Antibody LS-B130 concentration 5 ug/ml.

Western Blot Image:



Anti-PPAR2 Antibody - Western Blot. Western blot of affinity purified anti-PPAR2 antibody shows detection of PPAR2 protein in a mouse 3T3 whole cell lysate (lane 1 arrowhead). Approximately 20 ug of lysate was loaded onto a 4-20% gradient gel followed by transfer to nitrocellulose. Primary antibody was used at a 1:2000 dilution in 5% BLOTTO PBS solution. The membrane was washed and reacted with a 1:10000 dilution of IRDye800 Conjugated Affinity Purified Goat-anti-Rabbit IgG [H&L] MX10. Molecular weight estimation was made by comparison to prestained MW markers indicated at the left (lane M). Other detection systems will yield similar results.

Requested From:

Japan

Laboratory Reagent For In Vitro Research Use Only

Not for resale without prior written consent from LifeSpan BioSciences, Inc.

Created on 9/23/2014

© 2014 LifeSpan BioSciences