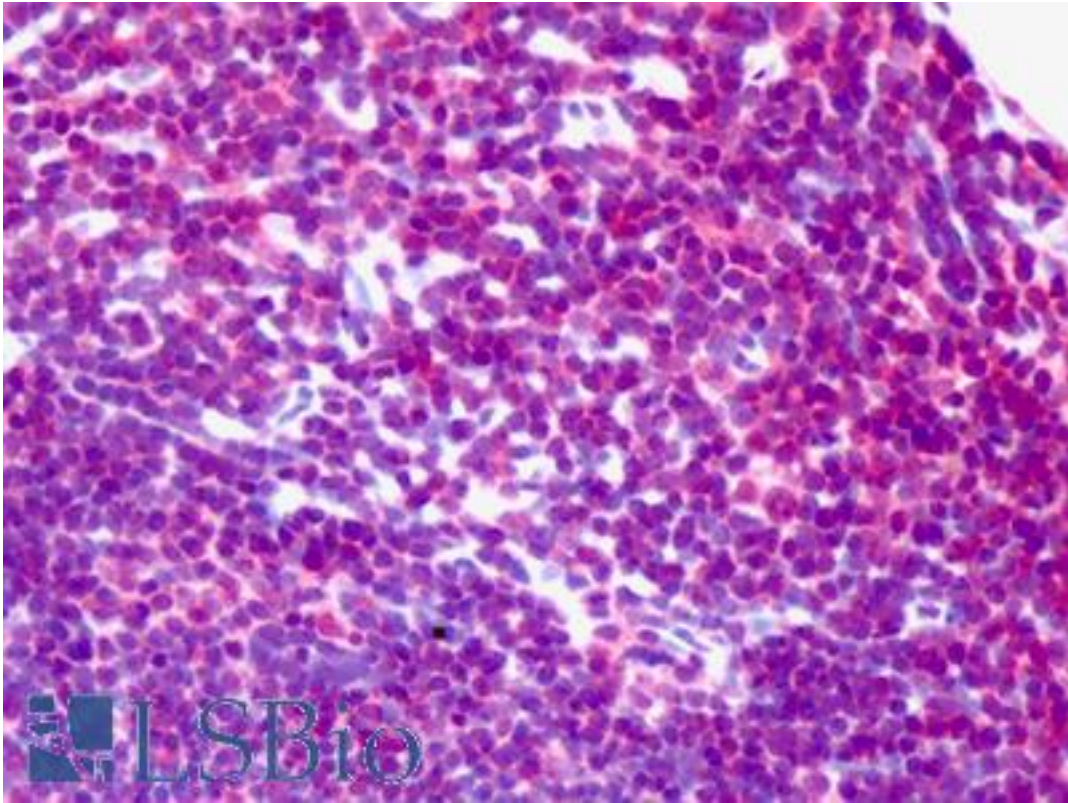


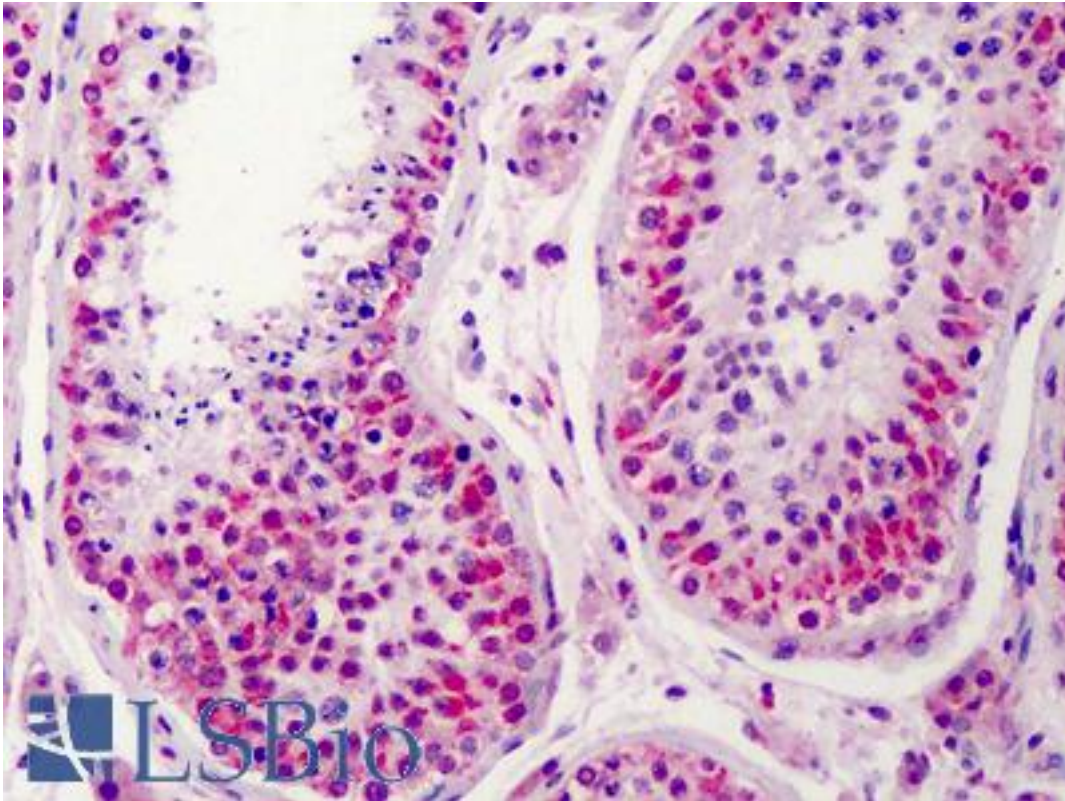
NEK2 Rabbit anti-Human Polyclonal (aa287-299) Antibody - LS-B129 - LSBio	
<b>CatalogID:</b>	LS-B129
<b>Validation:</b>	This antibody replaces catalog number LS-C18891. It has been validated for use in the following assays: IHC.
<b>Target:</b>	NIMA-related kinase 2 (NEK2)
<b>Synonyms:</b>	NEK2 Antibody, NIMA-related kinase 2 Antibody, NEK2A Antibody, HsPK21 Antibody, NimA-like protein kinase 1 Antibody, NLK1 Antibody, HSPK 21 Antibody, NimA-related protein kinase 2 Antibody
<b>Family / Subfamily:</b>	Protein Kinase / NEK
<b>Host</b>	NEK2 antibody was produced in Rabbit
<b>Clonality:</b>	Polyclonal
<b>Immunogen Species:</b>	NEK2 antibody was raised against Human
<b>Antigen Type:</b>	Synthetic peptide
<b>Immunogen:</b>	NEK2 antibody was raised against synthetic peptide from human NEK2.
<b>Specificity:</b>	aa 287-299 of Human NEK2 protein.
<b>Epitope:</b>	aa287-299
<b>Reactivity:</b>	Human
<b>Purification:</b>	Immunoaffinity purified
<b>Presentation:</b>	0.02 M potassium phosphate, 0.15 M sodium chloride, pH 7.2, 0.01% sodium azide.
<b>Recommended Storage:</b>	Store vial at -20 C prior to opening. Dilute only prior to immediate use. For extended storage aliquot contents and freeze at -20 C or below. Avoid cycles of freezing and thawing.
<b>Usage Summary:</b>	Immunohistochemistry: LS-B129 was validated for use in immunohistochemistry on a panel of 21 formalin-fixed, paraffin-embedded (FFPE) human tissues after heat induced antigen retrieval in pH 6.0 citrate buffer. After incubation with the primary antibody, slides were incubated with biotinylated secondary antibody, followed by alkaline phosphatase-streptavidin and chromogen. The stained slides were evaluated by a pathologist to confirm staining specificity. The optimal working concentration for LS-B129 was determined to be 2.5 ug/ml.
<b>Uses:</b>	IHC - Paraffin (2.5 µg/ml), Immunofluorescence, Western blot (1:500 - 1:2000), ELISA (1:2000 - 1:10000) (Optimal dilution to be determined by the researcher)
<b>Size:</b>	50 µg
<b>Concentration:</b>	1 mg/ml

**Immunohistochemistry Image:**



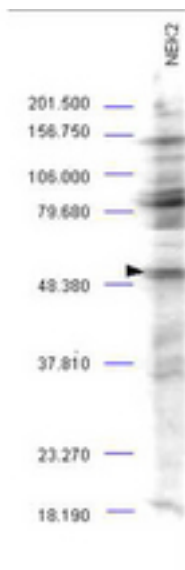
Anti-NEK2 antibody IHC of human colon. Immunohistochemistry of formalin-fixed, paraffin-embedded tissue after heat-induced antigen retrieval. Antibody LS-B129 concentration 2.5 ug/ml.

**Immunohistochemistry Image:**



Anti-NEK2 antibody IHC of human testis. Immunohistochemistry of formalin-fixed, paraffin-embedded tissue after heat-induced antigen retrieval. Antibody LS-B129 concentration 2.5 ug/ml.

**Western Blot Image:**



Anti-NEK2 Antibody - Western Blot. Western blot analysis is shown using Affinity Purified anti-NEK2 antibody to detect endogenous protein present in an unstimulated mouse A-20 whole cell lysate (arrowhead). Comparison to a molecular weight marker indicates a band of ~52 kD corresponding to NEK2 protein. The blot was incubated with a 1:500 dilution of the antibody at room temperature followed by detection using standard techniques. Personal communication Steven Pelech, Kinexus Inc.

<b>Requested From:</b>	Japan
Laboratory Reagent For In Vitro Research Use Only	
Not for resale without prior written consent from LifeSpan BioSciences, Inc.	
Created on 9/23/2014	
© 2014 LifeSpan BioSciences	