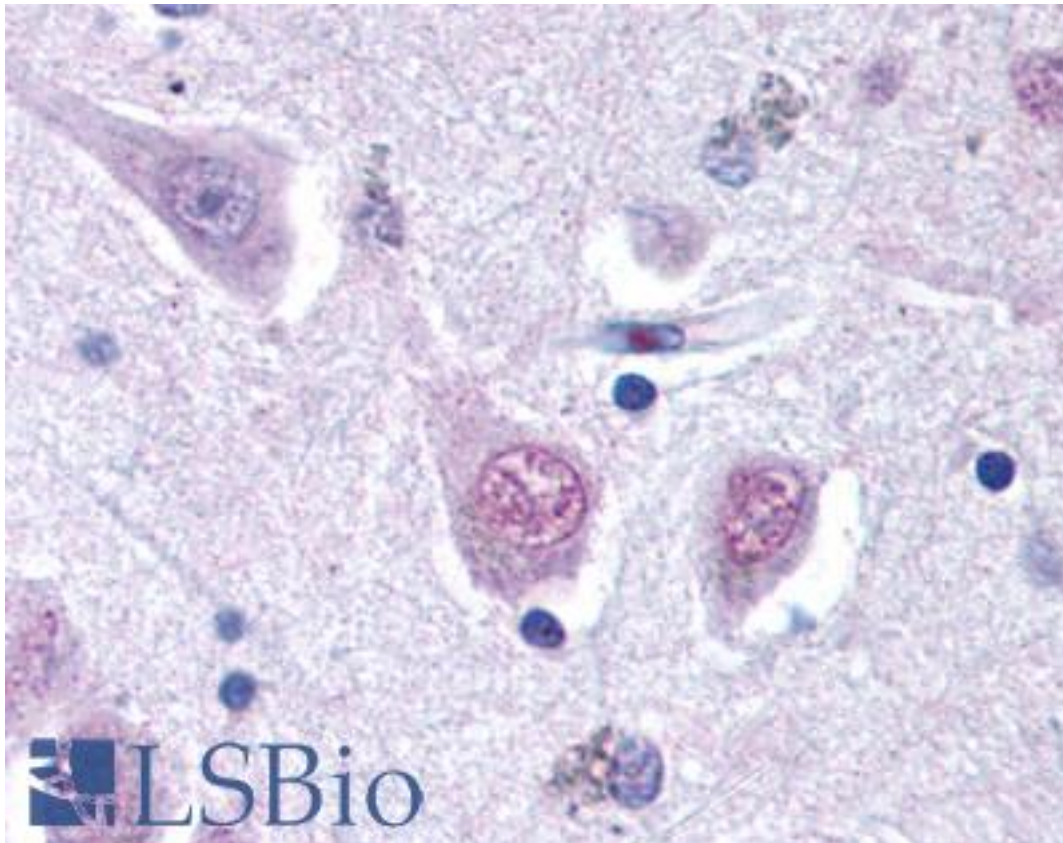


### RGS2 Rabbit anti-Human Polyclonal (aa1-50) Antibody - LS-B122 - LSBio

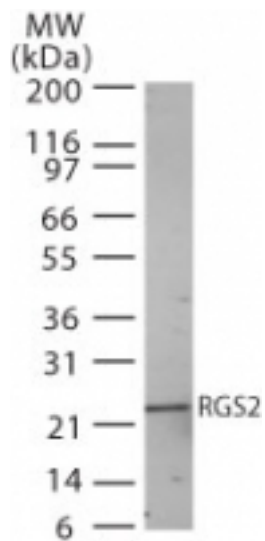
<b>CatalogID:</b>	LS-B122
<b>Validation:</b>	This antibody replaces catalog number LS-C788. It has been validated for use in the following assays: IHC.
<b>Target:</b>	regulator of G-protein signaling 2, 24kDa (RGS2)
<b>Synonyms:</b>	RGS2 Antibody, G0S8 Antibody
<b>Family / Subfamily:</b>	Regulator of G-protein signalling / not assigned-Regulator of G-protein signalling
<b>Host</b>	RGS2 antibody was produced in Rabbit
<b>Clonality:</b>	Polyclonal
<b>Isotype:</b>	IgG
<b>Immunogen Species:</b>	RGS2 antibody was raised against Human
<b>Antigen Type:</b>	Synthetic peptide
<b>Immunogen:</b>	RGS2 antibody was raised against synthetic peptide from human RGS2.
<b>Specificity:</b>	A synthetic peptide within amino acid residues 1-50 of human RGS2 was used as immunogen.
<b>Epitope:</b>	aa1-50
<b>Reactivity:</b>	Human, Mouse, Rat
<b>Purification:</b>	Protein G purified
<b>Presentation:</b>	PBS, 0.2% gelatin, 0.05% sodium azide.
<b>Recommended Storage:</b>	Long term: -70°C; Short term: +4°C
<b>Usage Summary:</b>	Immunohistochemistry: LS-B122 was validated for use in immunohistochemistry on a panel of 21 formalin-fixed, paraffin-embedded (FFPE) human tissues after heat induced antigen retrieval in pH 6.0 citrate buffer. After incubation with the primary antibody, slides were incubated with biotinylated secondary antibody, followed by alkaline phosphatase-streptavidin and chromogen. The stained slides were evaluated by a pathologist to confirm staining specificity. The optimal working concentration for LS-B122 was determined to be 20 ug/ml.
<b>Uses:</b>	IHC - Paraffin (20 µg/ml), Western blot (1 - 3 µg/ml) (Optimal dilution to be determined by the researcher)
<b>Size:</b>	50 µg
<b>Concentration:</b>	0.5 mg/ml

**Immunohistochemistry Image:**



Anti-RGS2 antibody IHC of human brain, cortex. Immunohistochemistry of formalin-fixed, paraffin-embedded tissue after heat-induced antigen retrieval. Antibody LS-B122 concentration 20 ug/ml.

**Western Blot Image:**



Western blot of RGS2 in human heart lysate using antibody at 2 ug/ml.

**Requested From:**

Japan

Laboratory Reagent For In Vitro Research Use Only

Not for resale without prior written consent from LifeSpan BioSciences, Inc.

Created on 9/23/2014

© 2014 LifeSpan BioSciences