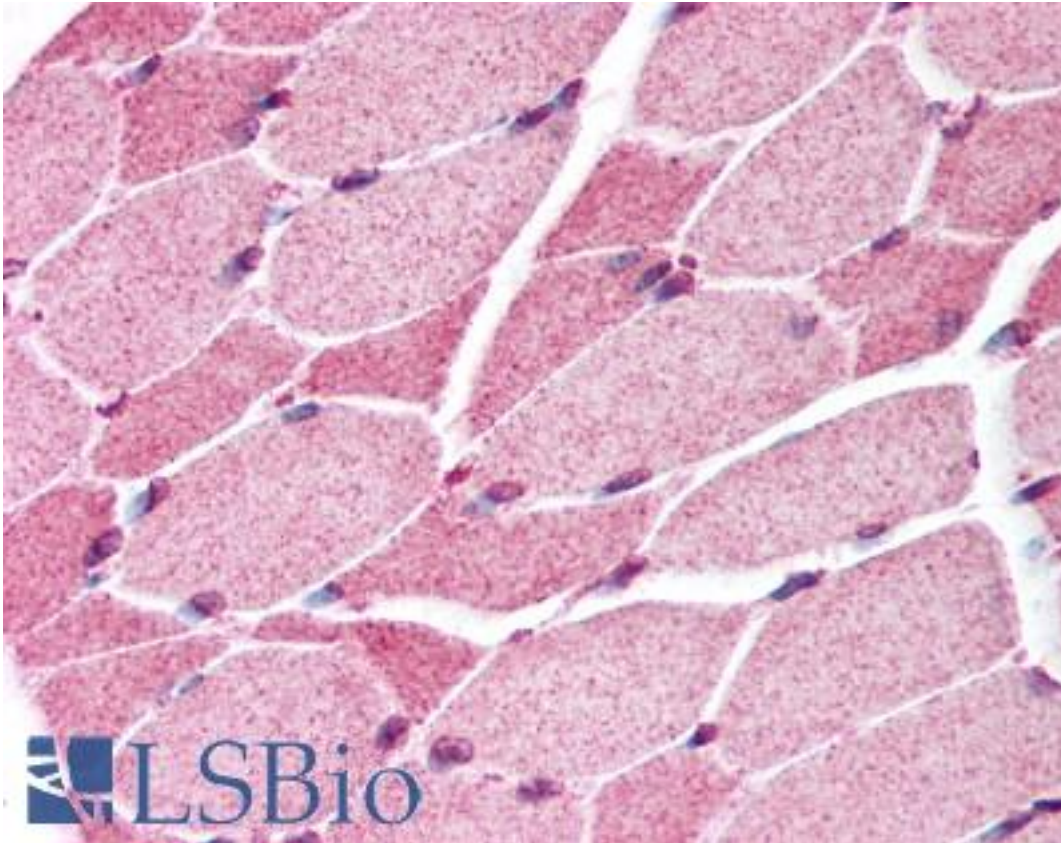


SMAD7 Rabbit anti-Human Polyclonal (aa36-50) Antibody - LS-B120 - LSBio	
<b>CatalogID:</b>	LS-B120
<b>Validation:</b>	This antibody replaces catalog number LS-C807. It has been validated for use in the following assays: IHC.
<b>Target:</b>	SMAD family member 7 (SMAD7)
<b>Synonyms:</b>	SMAD7 Antibody, CRCS3 Antibody, HSMAD7 Antibody, MAD homolog 7 Antibody, SMAD 7 Antibody, MADH7 Antibody, MADH8 Antibody, Mothers against DPP homolog 7 Antibody, Mothers against DPP homolog 8 Antibody, MAD homolog 8 Antibody, SMAD family member 7 Antibody
<b>Host</b>	SMAD7 antibody was produced in Rabbit
<b>Clonality:</b>	Polyclonal
<b>Isotype:</b>	IgG
<b>Immunogen Species:</b>	SMAD7 antibody was raised against Human
<b>Immunogen:</b>	SMAD7 antibody was raised against amino acids 12-29 (RLWRSRAPGGDEEEEGAG) and 36-50 (ELRGEGATDSRAHGA) of human SMAD7. This sequence is 100% or highly conserved between human and multiple species. Percent identity by BLAST analysis: Human, Monkey, Bovine, Dog, Bat, Panda (100%); Mouse, Rat, Rabbit, Pig, Platypus (94%).
<b>Specificity:</b>	Two synthetic peptides corresponding to aa 12-18 (RLWRSRAPGGDEEEEGAG) and amino acids 36-50 (ELRGEGATDSRAHGA) of human SMAD7; GenBank Accession no. AAB81354.1. This sequence is 100% or highly conserved between human and multiple species.
<b>Epitope:</b>	aa36-50
<b>Reactivity:</b>	Human, Monkey, Bat, Bovine, Dog
<b>Predicted Reactivity:</b>	Mouse, Rat, Pig, Rabbit
<b>Purification:</b>	Protein G purified
<b>Presentation:</b>	PBS, 0.05% BSA, 0.05% sodium azide.
<b>Recommended Storage:</b>	Long term: -20°C; Short term: +4°C. Avoid repeat freeze-thaw cycles.
<b>Usage Summary:</b>	Immunohistochemistry: LS-B120 was validated for use in immunohistochemistry on a panel of 21 formalin-fixed, paraffin-embedded (FFPE) human tissues after heat induced antigen retrieval in pH 6.0 citrate buffer. After incubation with the primary antibody, slides were incubated with biotinylated secondary antibody, followed by alkaline phosphatase-streptavidin and chromogen. The stained slides were evaluated by a pathologist to confirm staining specificity. The optimal working concentration for LS-B120 was determined to be 10 ug/ml.
<b>Uses:</b>	IHC - Paraffin (10 µg/ml), Western blot (1:500 - 1:1000) (Optimal dilution to be determined by the researcher)
<b>Size:</b>	50 µg
<b>Concentration:</b>	0.5 mg/ml

**Immunohistochemistry Image:**



Anti-SMAD7 antibody IHC of human skeletal muscle. Immunohistochemistry of formalin-fixed, paraffin-embedded tissue after heat-induced antigen retrieval. Antibody LS-B120 concentration 10 ug/ml.

**Requested From:**

Japan

Laboratory Reagent For In Vitro Research Use Only

Not for resale without prior written consent from LifeSpan BioSciences, Inc.

Created on 9/23/2014

© 2014 LifeSpan BioSciences