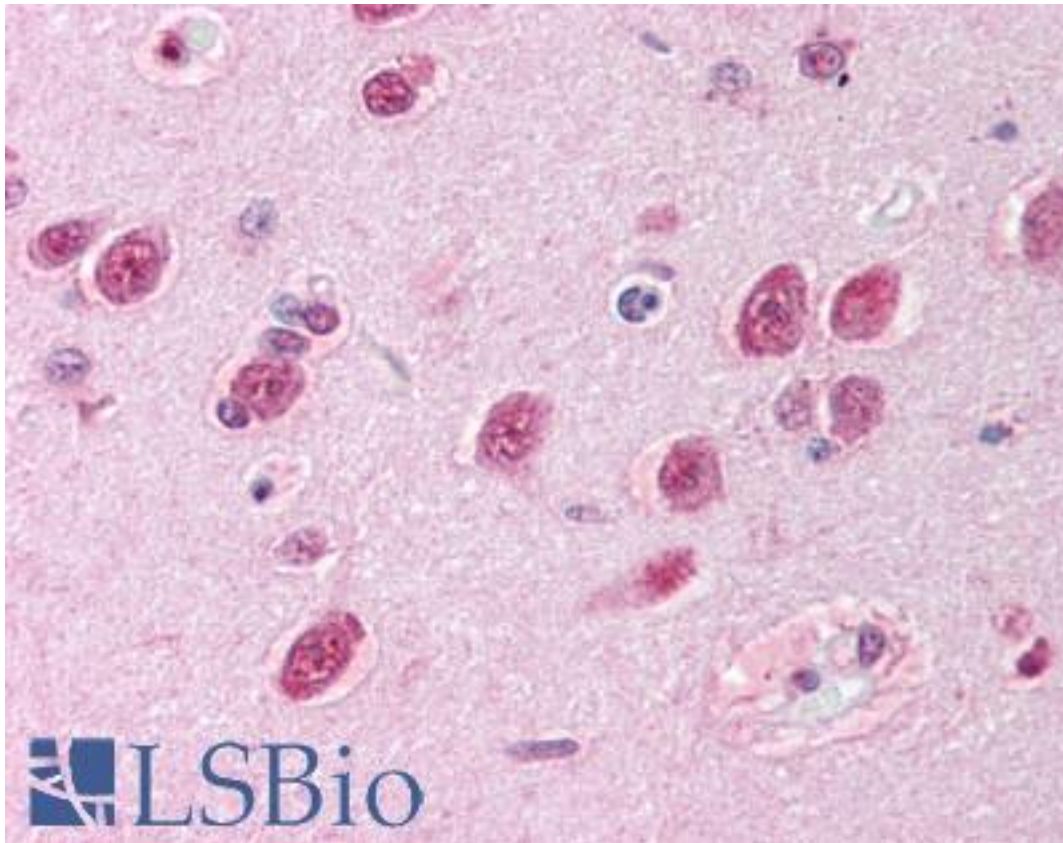


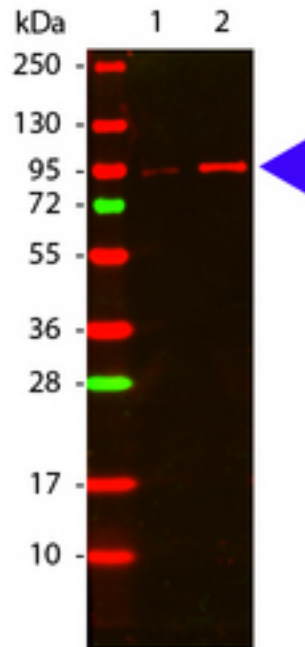
AKT1 / AKT Rabbit anti-Human Polyclonal (pThr308) Antibody - LS-B1190 - LSBio	
<b>CatalogID:</b>	LS-B1190
<b>Validation:</b>	This antibody replaces catalog number LS-C18881. It has been validated for use in the following assays: IHC.
<b>Target:</b>	v-akt murine thymoma viral oncogene homolog 1 (AKT1)
<b>Synonyms:</b>	AKT1 Antibody, AKT Antibody, AKT-1 Antibody, C-AKT Antibody, Pan-AKT Antibody, PKB alpha Antibody, PKBalphalpha Antibody, Proto-oncogene c-Akt Antibody, Protein kinase B Antibody, Rac protein kinase alpha Antibody, PRKBA Antibody, Protein kinase B alpha Antibody, RAC-PK-alpha Antibody, PKB Antibody, PKB-ALPHA Antibody, RAC Antibody, RAC-ALPHA Antibody
<b>Family / Subfamily:</b>	Protein Kinase / RAC/AKT
<b>Host</b>	AKT1 antibody was produced in Rabbit
<b>Clonality:</b>	Polyclonal
<b>Immunogen Species:</b>	AKT1 / AKT antibody was raised against Human
<b>Antigen Type:</b>	Synthetic peptide
<b>Immunogen:</b>	AKT1 / AKT antibody was raised against synthetic peptide from human AKT1.
<b>Specificity:</b>	Amino acids 302 to 311 with pThr 308 of human AKT1
<b>Epitope:</b>	pThr308
<b>Reactivity:</b>	Human, Mouse, Rat
<b>Purification:</b>	Immunoaffinity purified
<b>Presentation:</b>	0.02 M potassium phosphate, 0.15 M sodium chloride, pH 7.2, 0.01% sodium azide.
<b>Recommended Storage:</b>	+4°C or -20°C, Avoid repeated freezing and thawing.
<b>Usage Summary:</b>	Immunohistochemistry: LS-B1190 was validated for use in immunohistochemistry on a panel of 21 formalin-fixed, paraffin-embedded (FFPE) human tissues after heat induced antigen retrieval in pH 6.0 citrate buffer. After incubation with the primary antibody, slides were incubated with biotinylated secondary antibody, followed by alkaline phosphatase-streptavidin and chromogen. The stained slides were evaluated by a pathologist to confirm staining specificity. The optimal working concentration for LS-B1190 was determined to be 5 ug/ml.
<b>Uses:</b>	IHC - Paraffin (5 ug/ml), Western blot, ELISA (Optimal dilution to be determined by the researcher)
<b>Size:</b>	50 ug
<b>Concentration:</b>	0.55 mg/ml

**Immunohistochemistry Image:**



Anti-AKT1 antibody IHC of human brain, cortex. Immunohistochemistry of formalin-fixed, paraffin-embedded tissue after heat-induced antigen retrieval. Antibody LS-B1190 concentration 5 ug/ml.

**Western Blot Image:**



Western blot of Rabbit anti-Akt phospho T308 antibody. Lane 1: GST tagged AKT1 un-active recombinant protein. Lane 2: GST tagged AKT1 active recombinant protein. Load: 50 ng per lane. Primary antibody: Akt phospho T308 antibody at 1:1000 for overnight at 4C. Secondary antibody: DyLight 649 rabbit secondary antibody at 1:20000 for 30 min at RT. Block: MB-070 for 30 min at RT. Other band(s): none.

**Requested From:**

Japan

Laboratory Reagent For In Vitro Research Use Only

Not for resale without prior written consent from LifeSpan BioSciences, Inc.

Created on 9/23/2014

© 2014 LifeSpan BioSciences