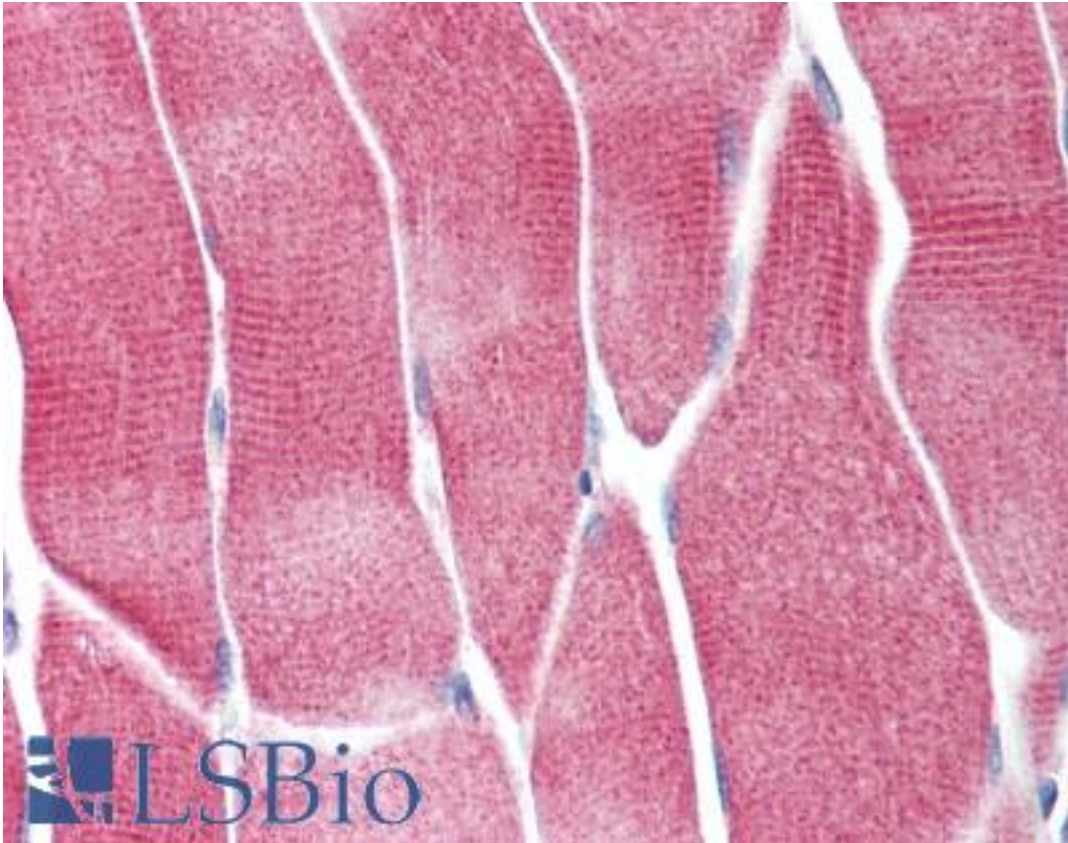


AKT1 / AKT Rabbit anti-Human Polyclonal (pSer473) Antibody - LS-B1183 - LSBio

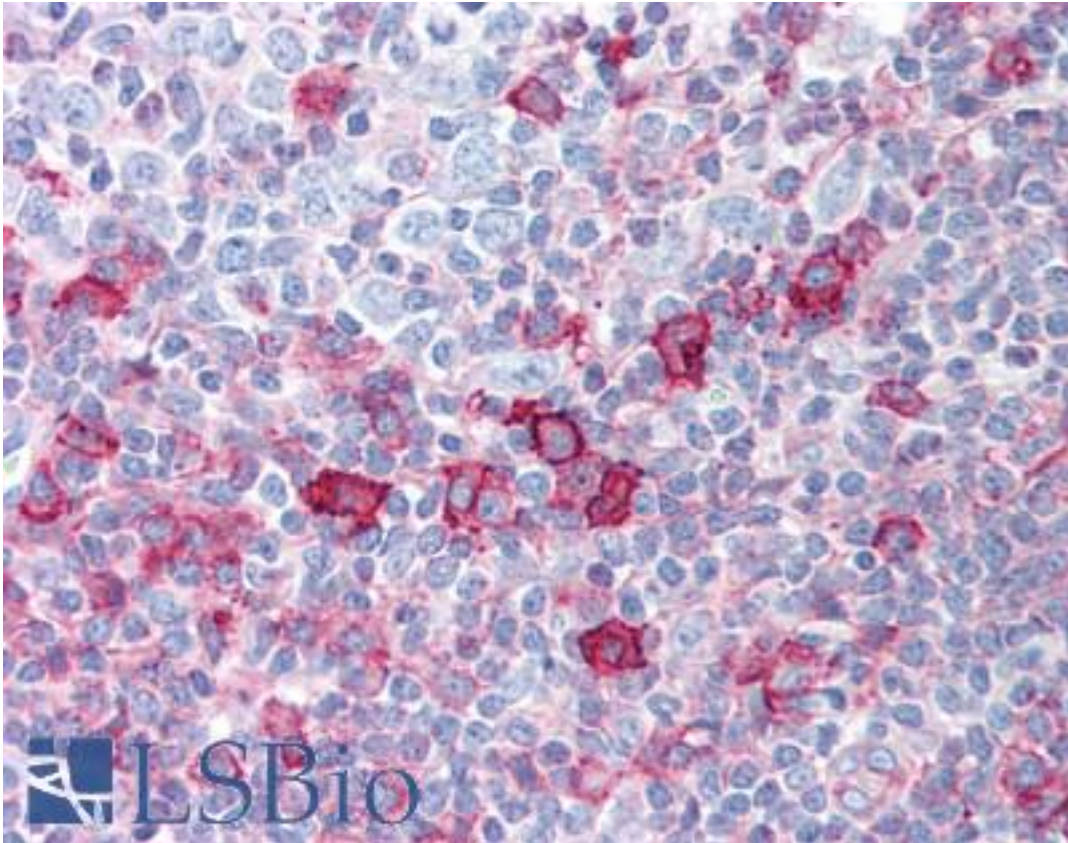
CatalogID:	LS-B1183
Validation:	This antibody replaces catalog number LS-C18880. It has been validated for use in the following assays: IHC.
Target:	v-akt murine thymoma viral oncogene homolog 1 (AKT1)
Synonyms:	AKT1 Antibody, AKT Antibody, AKT-1 Antibody, C-AKT Antibody, Pan-AKT Antibody, PKB alpha Antibody, PKBalphalpha Antibody, Proto-oncogene c-Akt Antibody, Protein kinase B Antibody, Rac protein kinase alpha Antibody, PRKBA Antibody, Protein kinase B alpha Antibody, RAC-PK-alpha Antibody, PKB Antibody, PKB-ALPHA Antibody, RAC Antibody, RAC-ALPHA Antibody
Family / Subfamily:	Protein Kinase / RAC/AKT
Host	AKT1 antibody was produced in Rabbit
Clonality:	Polyclonal
Immunogen Species:	AKT1 / AKT antibody was raised against Human
Antigen Type:	Synthetic peptide
Immunogen:	AKT1 / AKT antibody was raised against synthetic peptide from human AKT1.
Specificity:	The C-terminus aa 460-480 of human, mouse, rat and chicken AKT proteins conjugated to KLH.
Epitope:	pSer473
Reactivity:	Human, Mouse, Rat
Purification:	Immunoaffinity purified
Presentation:	0.02 M potassium phosphate, 0.15 M sodium chloride, pH 7.2, 0.01% sodium azide.
Recommended Storage:	+4°C or -20°C, Avoid repeated freezing and thawing.
Usage Summary:	Immunohistochemistry: LS-B1183 was validated for use in immunohistochemistry on a panel of 21 formalin-fixed, paraffin-embedded (FFPE) human tissues after heat induced antigen retrieval in pH 6.0 citrate buffer. After incubation with the primary antibody, slides were incubated with biotinylated secondary antibody, followed by alkaline phosphatase-streptavidin and chromogen. The stained slides were evaluated by a pathologist to confirm staining specificity. The optimal working concentration for LS-B1183 was determined to be 5 ug/ml.
Uses:	IHC - Paraffin (5 ug/ml), ICC, Immunofluorescence, Western blot (1:200 - 1:1000), ELISA (1:15000 - 1:60000) (Optimal dilution to be determined by the researcher)
Size:	50 µg
Concentration:	1 mg/ml

Immunohistochemistry Image:



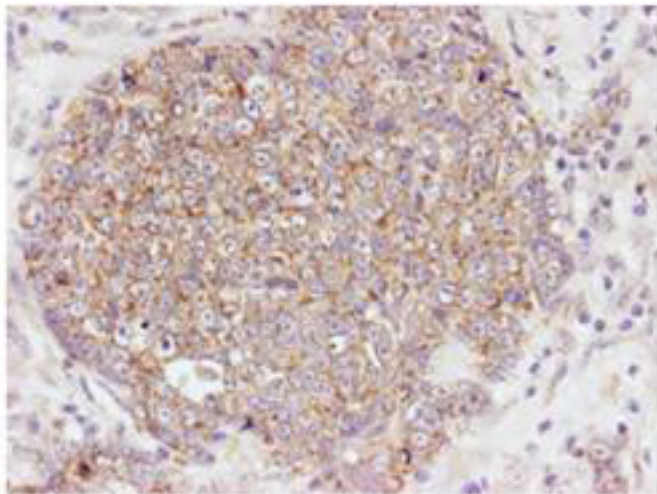
Anti-AKT1 antibody IHC of human skeletal muscle. Immunohistochemistry of formalin-fixed, paraffin-embedded tissue after heat-induced antigen retrieval. Antibody LS-B1183 concentration 5 ug/ml.

Immunohistochemistry Image:



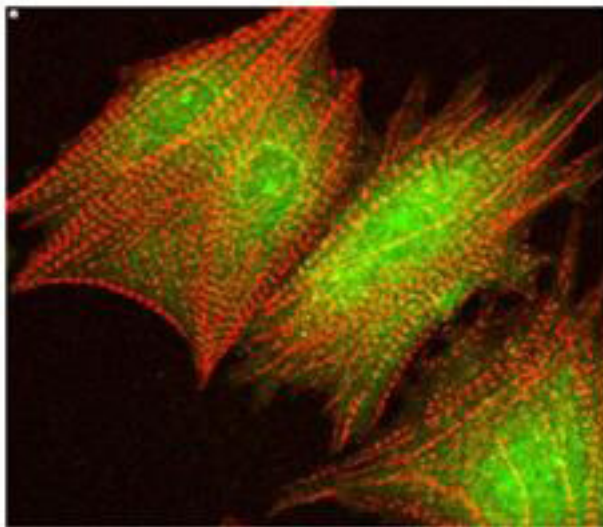
Anti-AKT1 antibody IHC of human tonsil. Immunohistochemistry of formalin-fixed, paraffin-embedded tissue after heat-induced antigen retrieval. Antibody LS-B1183 concentration 5 ug/ml.

Immunohistochemistry Image:



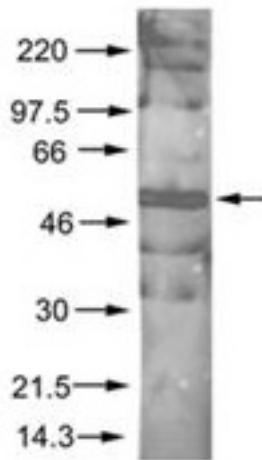
Immunohistochemistry of Rabbit Anti-Akt pS473 antibody. Tissue: human breast carcinoma. Fixation: formalin fixed paraffin embedded. Antigen retrieval: not required. Primary antibody: Akt pS473 antibody at 100 dilution for 1 h at RT. Secondary antibody: Dako's Techmate streptavidin-biotin reagents at 1:10000 for 45 min at RT. Localization: Akt pS473 is nuclear and occasionally cytoplasmic.

Immunofluorescence Image:



Anti-AKT pS473 Antibody - Immunofluorescence Microscopy. Confocal image using Rabbit anti-AKT pS473 at a 1:40 dilution to detect phosphorylated AKT (green) by immunofluorescence microscopy in cardiomyocytes infected with adenovirus expressing with wild-type AKT in conjunction with a Texas-red conjugated phalloidin (red) to label filamentous actin.

Western Blot Image:



Anti-AKT pS473 Antibody - Western Blot. Rabbit anti-AKT pS473 was used at a 1:200 dilution to detect phosphorylated AKT by Western blot. A nuclear extract from cells infected with adenovirus expressing nuclear-targeted AKT kinase was used.

Requested From:

Japan

Laboratory Reagent For In Vitro Research Use Only

Not for resale without prior written consent from LifeSpan BioSciences, Inc.

Created on 9/23/2014

© 2014 LifeSpan BioSciences