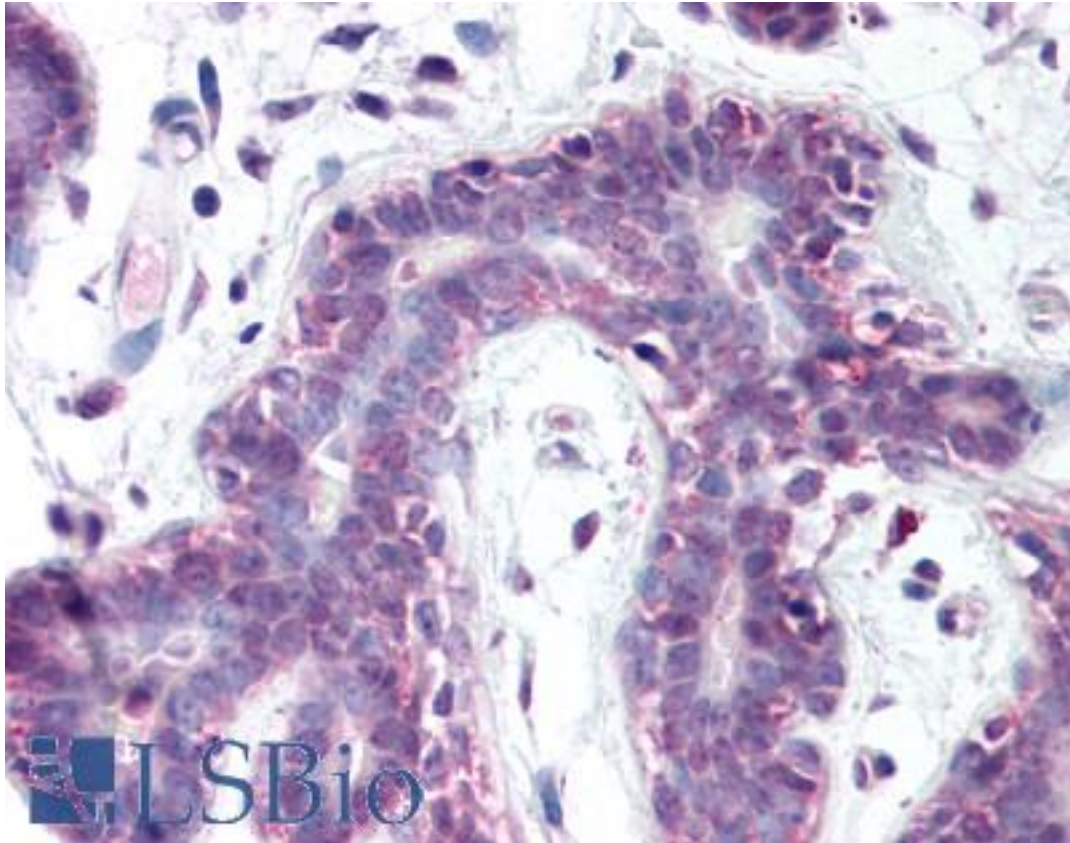


PRMT6 Rabbit anti-Human Polyclonal Antibody - LS-B118 - LSBio

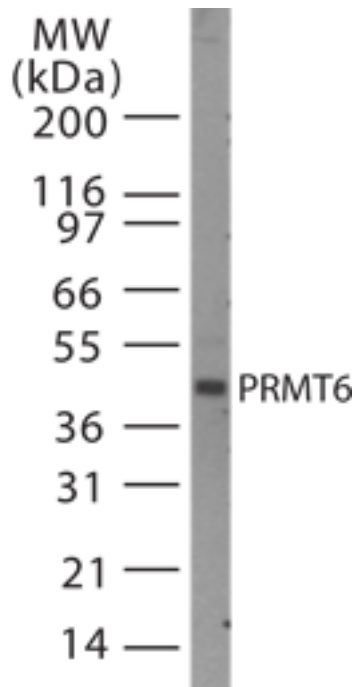
| | |
|------------------------------|---|
| CatalogID: | LS-B118 |
| Validation: | This antibody replaces catalog number LS-C777. It has been validated for use in the following assays: IHC. |
| Target: | protein arginine methyltransferase 6 (PRMT6) |
| Synonyms: | PRMT6 Antibody, Arginine methyltransferase 6 Antibody, HRMT1L6 Antibody |
| Host | PRMT6 antibody was produced in Rabbit |
| Clonality: | Polyclonal |
| Isotype: | IgG |
| Immunogen Species: | PRMT6 antibody was raised against Human |
| Antigen Type: | Synthetic peptide |
| Immunogen: | PRMT6 antibody was raised against this antibody was developed a synthetic peptide corresponding to amino acids 23-43 (C-EEDGAEREALERPRRTKRER) of human PRMT6, GenBank no. gb AAH73866.1 . HeLa cell lysate (IMGEX, cat. no. 40161) can be used as positive control. This antibody also cross reacts with mouse cell line (RAW). Percent identity by BLAST analysis: Human, Monkey, Marmoset (100%); Orangutan (95%); Elephant (86%); Horse (81%). |
| Specificity: | Synthetic peptide of human PRMT6 |
| Reactivity: | Human, Monkey |
| Predicted Reactivity: | Orangutan |
| Purification: | Protein G purified |
| Presentation: | PBS, 0.02% sodium azide, 0.1 mg/ml BSA. |
| Recommended Storage: | Long term: -70°C; Short term: +4°C |
| Usage Summary: | Immunohistochemistry: LS-B118 was validated for use in immunohistochemistry on a panel of 21 formalin-fixed, paraffin-embedded (FFPE) human tissues after heat induced antigen retrieval in pH 6.0 citrate buffer. After incubation with the primary antibody, slides were incubated with biotinylated secondary antibody, followed by alkaline phosphatase-streptavidin and chromogen. The stained slides were evaluated by a pathologist to confirm staining specificity. The optimal working concentration for LS-B118 was determined to be 1:100. |
| Uses: | IHC - Paraffin (1:100), ICC (1:50), Western blot (1:500 - 1:1000) (Optimal dilution to be determined by the researcher) |
| Size: | 50 µl |
| Concentration: | 1 mg/ml |

Immunohistochemistry Image:



Anti-PRMT6 antibody IHC of human breast. Immunohistochemistry of formalin-fixed, paraffin-embedded tissue after heat-induced antigen retrieval. Antibody LS-B118 dilution 1:100.

Western Blot Image:



Western blot of PRMT6 in cell lysates from HeLa cells using antibody at 1:500 dilution. Twenty microgram of HeLa cell lysate was loaded per well of a mini gel.

Requested From:

Japan

Laboratory Reagent For In Vitro Research Use Only

Not for resale without prior written consent from LifeSpan BioSciences, Inc.

Created on 9/23/2014

© 2014 LifeSpan BioSciences