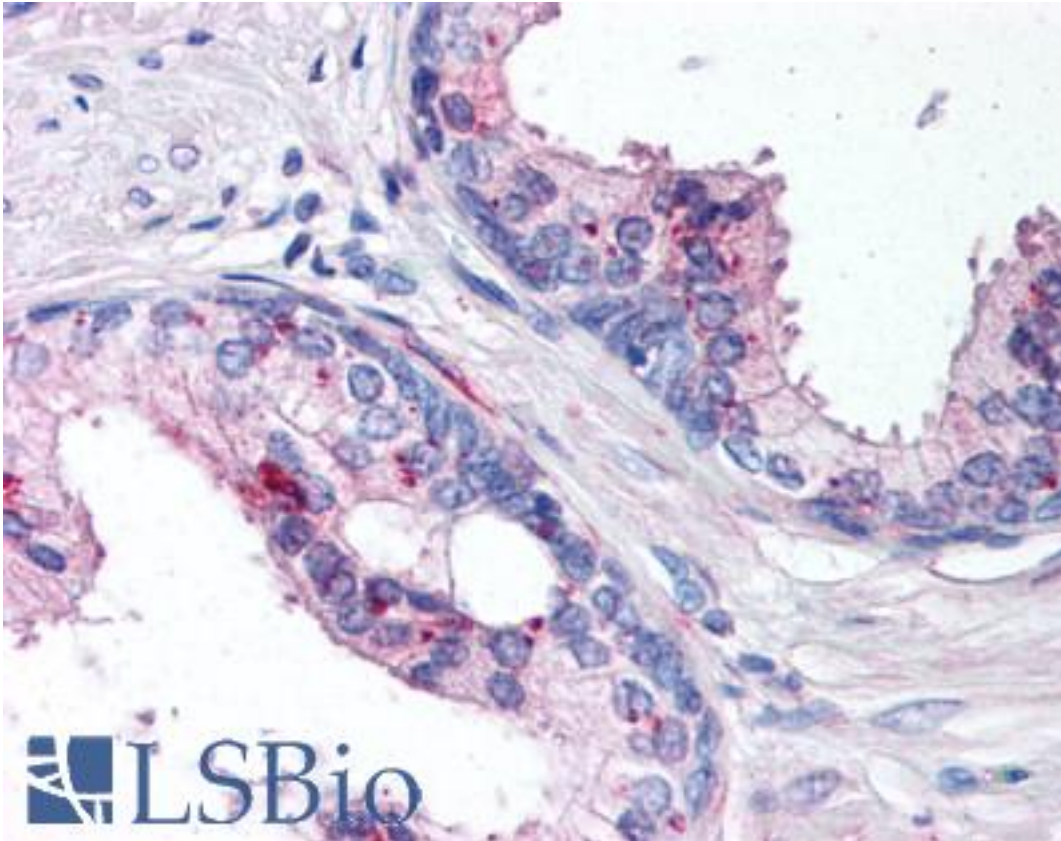


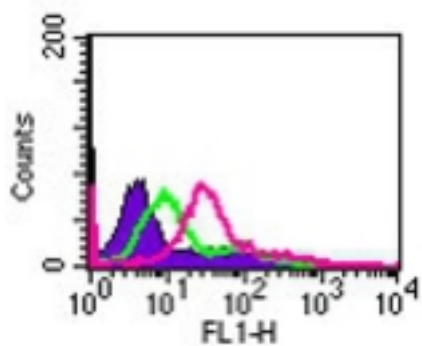
IL24 Rabbit anti-Human Polyclonal (aa100-150) Antibody - LS-B113 - LSBio	
CatalogID:	LS-B113
Validation:	This antibody replaces catalog number LS-C725. It has been validated for use in the following assays: IHC.
Target:	interleukin 24 (IL24)
Synonyms:	IL24 Antibody, FISP Antibody, IL10B Antibody, IL-24 Antibody, IL-4-induced secreted protein Antibody, Interleukin 24 Antibody, Interleukin-24 Antibody, Melanocyte-associated Mda-7 Antibody, Mob-5 Antibody, ST16 Antibody, Mda-7 Antibody, MDA7 Antibody, MOB5 Antibody, C49A Antibody
Family / Subfamily:	Interleukin
Host	IL24 antibody was produced in Rabbit
Clonality:	Polyclonal
Isotype:	IgG
Immunogen Species:	IL24 antibody was raised against Human
Immunogen:	IL24 antibody was raised against amino acids 123-136 (KNYHNRTVEVRTLK) of human IL-24 were used as the immunogen for this antibody. Percent identity by BLAST analysis: Human, Gorilla, Monkey (100%); Gibbon (93%); Marmoset (86%).
Specificity:	A portion of amino acids 100-150 of human IL-24 was used as the immunogen.
Epitope:	aa100-150
Reactivity:	Human, Gorilla, Monkey
Predicted Reactivity:	Gibbon
Purification:	Protein G purified
Presentation:	PBS, 0.2% gelatin, 0.05% sodium azide.
Recommended Storage:	Long term: -20°C; Short term: +4°C. Avoid repeat freeze-thaw cycles.
Usage Summary:	Immunohistochemistry: LS-B113 was validated for use in immunohistochemistry on a panel of 21 formalin-fixed, paraffin-embedded (FFPE) human tissues after heat induced antigen retrieval in pH 6.0 citrate buffer. After incubation with the primary antibody, slides were incubated with biotinylated secondary antibody, followed by alkaline phosphatase-streptavidin and chromogen. The stained slides were evaluated by a pathologist to confirm staining specificity. The optimal working concentration for LS-B113 was determined to be 10 ug/ml.
Uses:	IHC - Paraffin (10 µg/ml), Western blot (0.5 - 3 µg/ml), Flow Cytometry (Optimal dilution to be determined by the researcher)
Size:	50 µg
Concentration:	0.5 mg/ml

Immunohistochemistry Image:



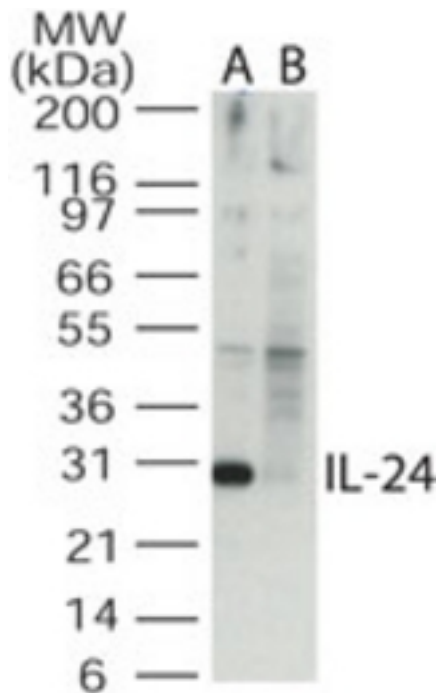
Anti-IL-24 antibody IHC of human prostate. Immunohistochemistry of formalin-fixed, paraffin-embedded tissue after heat-induced antigen retrieval. Antibody LS-B113 concentration 10 ug/ml.

Flow Cytometry Image:



Cell-surface flow cytometry analysis of IL-24 in Jurkat cells using antibody at 5 ug/10⁶ cells. The shaded histogram represents cells only, green represents isotype control, and purple represents anti-IL-24 antibody.

Western Blot Image:



Western blot of IL-24 in the A) absence and B) presence of blocking peptide in Jurkat cell lysate using antibody at 0.5 ug/ml.

Requested From:

Japan

Laboratory Reagent For In Vitro Research Use Only

Not for resale without prior written consent from LifeSpan BioSciences, Inc.

Created on 9/23/2014

© 2014 LifeSpan BioSciences