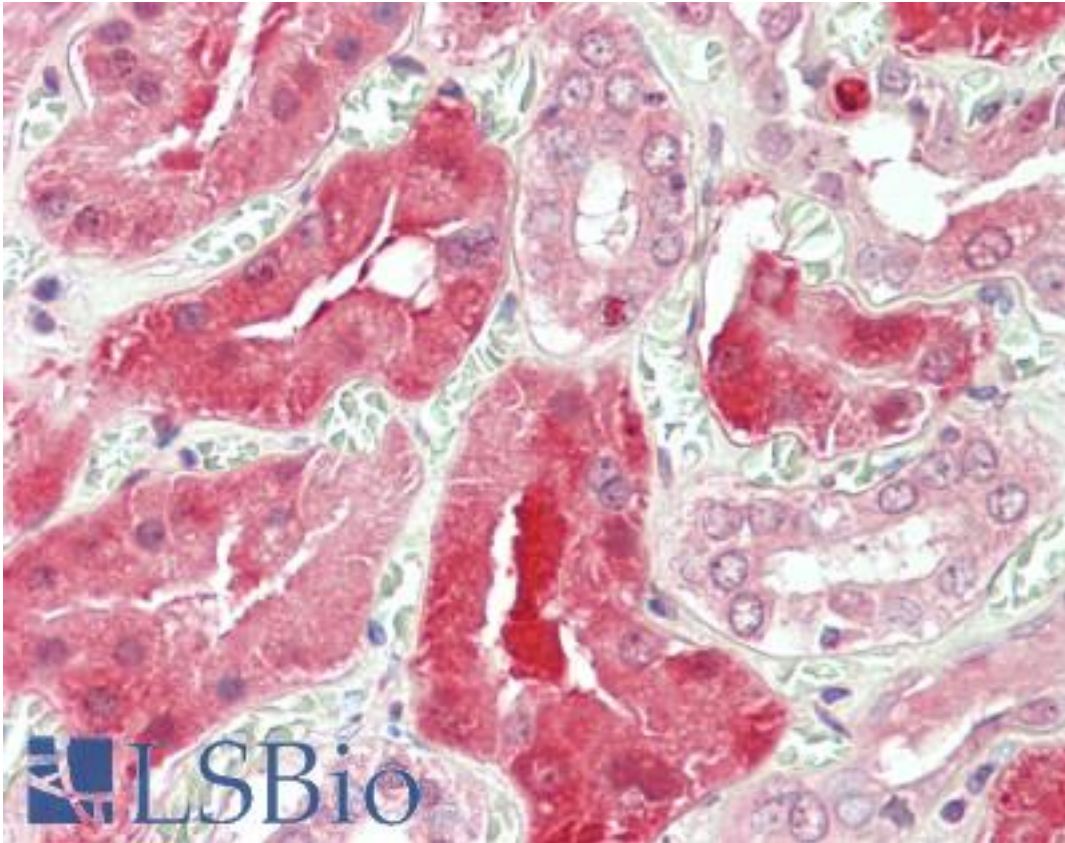


STAT3 Goat anti-Human Polyclonal (Internal) Antibody - LS-B11150 - LSBio	
CatalogID:	LS-B11150
Validation:	This antibody replaces catalog number LS-C34683. It has been validated for use in the following assays: IHC-P.
Target:	signal transducer and activator of transcription 3 (acute-phase response factor) (STAT3)
Synonyms:	STAT3 Antibody, Acute-phase response factor Antibody, APRF Antibody, DNA-binding protein APRF Antibody, HIES Antibody
Host	STAT3 antibody was produced in Goat
Clonality:	Polyclonal
Immunogen Species:	STAT3 antibody was raised against Human
Antigen Type:	Synthetic peptide
Immunogen:	STAT3 antibody was raised against synthetic peptide CRPESQEHPEADP from an internal region of human STAT3 (NP_644805.1; NP_003141.2; NP_998827.1). Percent identity by BLAST analysis: Human, Gorilla, Orangutan, Gibbon, Monkey, Marmoset, Mouse, Rat, Sheep, Hamster, Elephant, Panda, Dog, Bat, Bovine, Rabbit, Horse, Pig, Opossum (100%).
Specificity:	Human STAT3. This antibody is expected to recognise all three reported isoforms (NP_644805.1, NP_003141.2 and NP_998827.1).
Epitope:	Internal
Reactivity:	Human, Gorilla, Orangutan, Gibbon, Monkey, Mouse, Rat, Bat, Bovine, Dog, Hamster, Horse, Pig, Rabbit, Sheep
Purification:	Immunoaffinity purified
Presentation:	Tris-buffered saline, pH 7.3, 0.5% BSA, 0.02% sodium azide
Recommended Storage:	Store at -20°C. Minimize freezing and thawing.
Usage Summary:	Peptide ELISA: antibody detection limit dilution 1:16000. Western blot: Approx 75 kDa band observed in Human Heart and Human Liver lysates (calculated MW of 83.1 kDa according to NP_998827.1). Recommended concentration: 1-3 ug/ml.
Uses:	IHC - Paraffin (5 µg/ml), Western blot (1 - 3 µg/ml), ELISA (Optimal dilution to be determined by the researcher)
Size:	50 µg
Concentration:	0.5 mg/ml

Immunohistochemistry Image:



Human Kidney: Formalin-Fixed, Paraffin-Embedded (FFPE)

Western Blot Image:



STAT3 antibody (1 ug/ml) staining of Human Liver lysate (35 ug protein/ml in RIPA buffer). Primary incubation was 1 hour. Detected by chemiluminescence.

Requested From:

Japan

Laboratory Reagent For In Vitro Research Use Only

Not for resale without prior written consent from LifeSpan BioSciences, Inc.

Created on 9/23/2014

© 2014 LifeSpan BioSciences