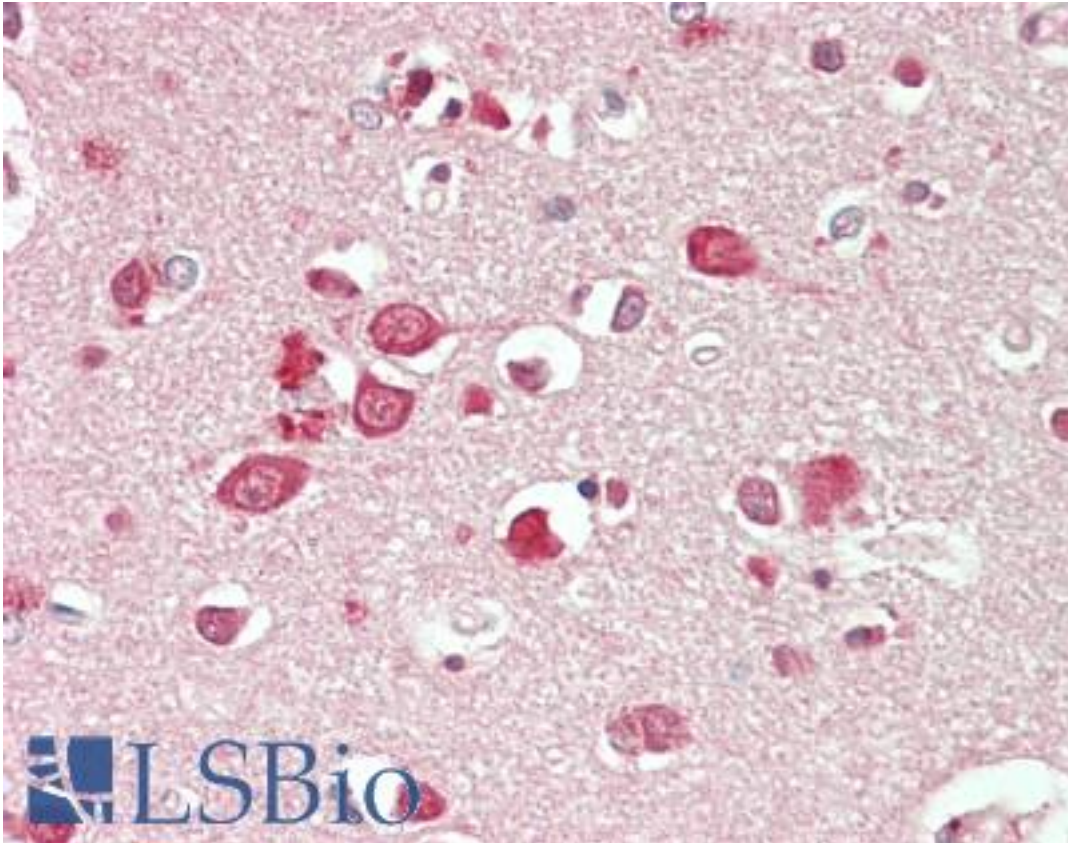


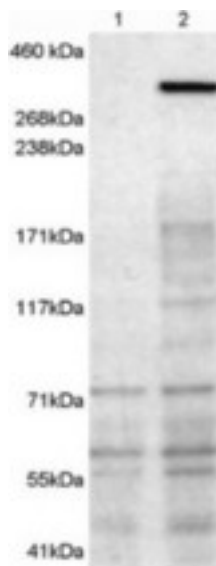
NBEA / Neurobeachin Goat anti-Human Polyclonal (C-Terminus) Antibody - LS-B11147 - LSBio	
CatalogID:	LS-B11147
Validation:	This antibody replaces catalog number LS-C55161. It has been validated for use in the following assays: IHC-P.
Target:	neurobeachin (NBEA)
Synonyms:	NBEA Antibody, LYST2 Antibody, Neurobeachin Antibody, Protein BCL8B Antibody, BCL8B Antibody, KIAA1544 Antibody
Host	NBEA antibody was produced in Goat
Clonality:	Polyclonal
Immunogen Species:	NBEA / Neurobeachin antibody was raised against Human
Antigen Type:	Synthetic peptide
Immunogen:	NBEA / Neurobeachin antibody was raised against synthetic peptide C-DFNRWHYEHQNRV from the C-terminus of human NBEA / Neurobeachin (NP_056493.3; NP_001191126.1). Percent identity by BLAST analysis: Human, Gorilla, Gibbon, Monkey, Marmoset, Mouse, Hamster, Elephant, Dog, Bovine, Bat, Horse, Rabbit, Opossum, Chicken, Platypus, Xenopus, Stickleback, Pufferfish, Zebrafish (100%).
Specificity:	Human NBEA / Neurobeachin. This antibody is expected to recognise isoform 1 (NP_056493.3) and isoform 2 (NP_001191126.1).
Epitope:	C-Terminus
Reactivity:	Human, Gorilla, Gibbon, Monkey, Mouse, Bat, Bovine, Dog, Hamster, Horse, Rabbit, Chicken, Xenopus, Zebrafish
Purification:	Immunoaffinity purified
Presentation:	Tris-buffered saline, pH 7.3, 0.5% BSA, 0.02% sodium azide
Recommended Storage:	Store at -20°C. Minimize freezing and thawing.
Uses:	IHC - Paraffin (10 µg/ml), Western blot (1 - 3 µg/ml), ELISA (Optimal dilution to be determined by the researcher)
Uses Not Recommended:	IHC - Paraffin
Size:	50 µg

Immunohistochemistry Image:



Human Brain, Cortex: Formalin-Fixed, Paraffin-Embedded (FFPE)

Western Blot Image:



Antibody (1 ug/ml) staining of 1) untransfected HEK293T cells 2) HEK293T cells transfected with mouse NBEA. Detected by chemiluminescence. Data kindly provided by Professor John Creemers, K. U. Leuven, Belgium.

Requested From:

Japan

Laboratory Reagent For In Vitro Research Use Only

Not for resale without prior written consent from LifeSpan BioSciences, Inc.

Created on 9/23/2014

© 2014 LifeSpan BioSciences