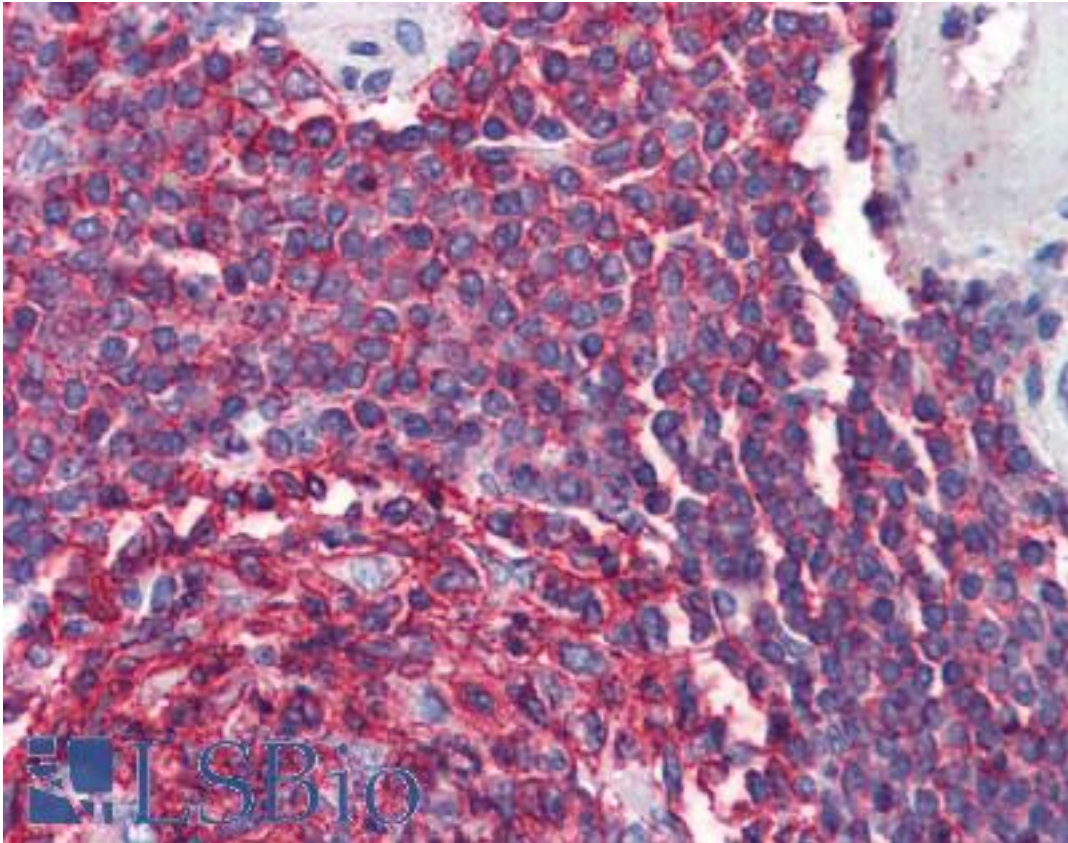


CD20 Goat anti-Human Polyclonal (C-Terminus) Antibody - LS-B11144 - LSBio

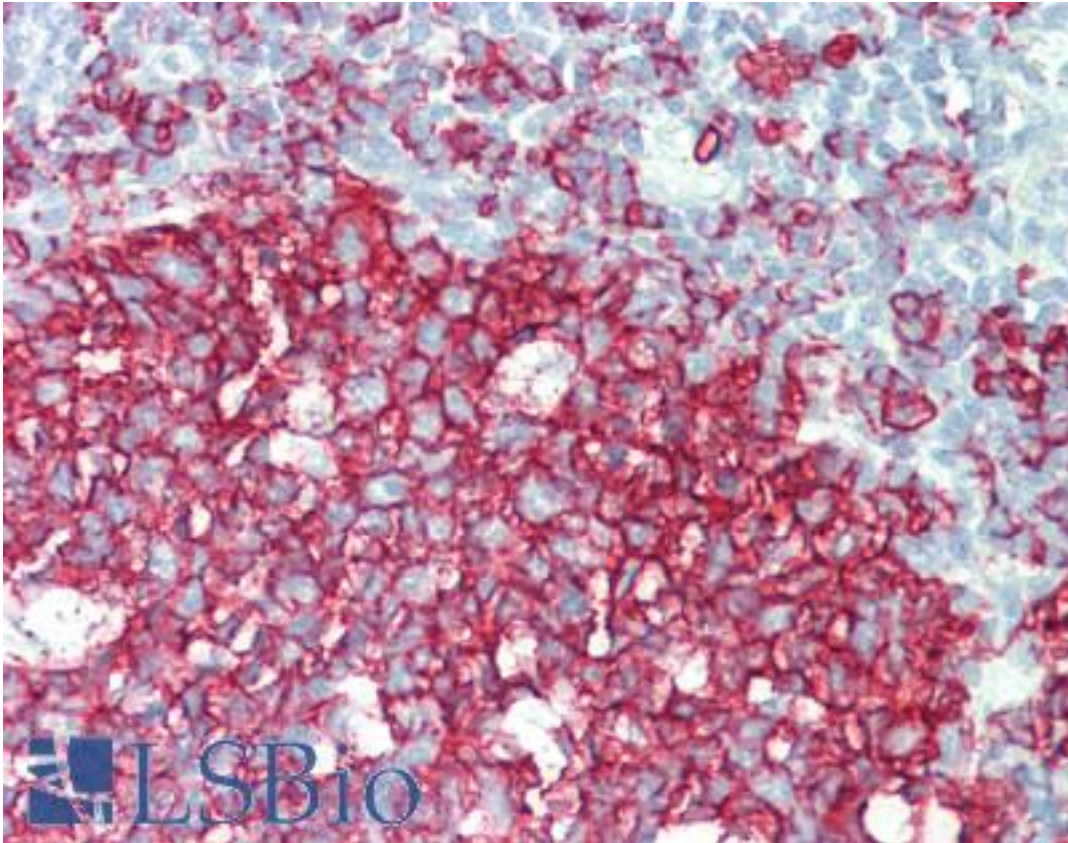
CatalogID:	LS-B11144
Validation:	This antibody replaces catalog number LS-C20141. It has been validated for use in the following assays: IHC-P.
Target:	membrane-spanning 4-domains, subfamily A, member 1 (MS4A1)
Synonyms:	MS4A1 Antibody, B-lymphocyte antigen CD20 Antibody, B1 Antibody, Bp35 Antibody, CD20 Antibody, CD20 antigen Antibody, CD20 receptor Antibody, LEU-16 Antibody, CVID5 Antibody
Host	MS4A1 antibody was produced in Goat
Clonality:	Polyclonal
Immunogen Species:	CD20 antibody was raised against Human
Antigen Type:	Synthetic peptide
Immunogen:	CD20 antibody was raised against synthetic peptide with sequence CQDQESSPIENDSSP, from the C Terminus of the protein sequence according to NP_068769.2; NP_690605.1.
Specificity:	Human CD20 / MS4A1
Epitope:	C-Terminus
Purification:	Immunoaffinity purified
Presentation:	Tris buffered saline, 0.5% BSA, 0.02% sodium azide.
Recommended Storage:	Store vial at -20 C or below prior to opening. For extended storage, aliquot contents and freeze at -20 C or below. Avoid cycles of freezing and thawing. Dilute only prior to immediate use.
Uses:	IHC - Paraffin (2 - 2.5 µg/ml), Western blot (3 - 5 µg/ml), ELISA (Optimal dilution to be determined by the researcher)
Size:	50 µg
Concentration:	0.5 mg/ml

Immunohistochemistry Image:



Spleen: Formalin-Fixed, Paraffin-Embedded (FFPE)

Immunohistochemistry Image:



Human Tonsil: Formalin-Fixed, Paraffin-Embedded (FFPE)

Western Blot Image:



Staining (4 μ g/ml) of Daudi lysate (RIPA buffer, 20 μ g total protein per lane). Primary incubated for 12 hour. Detected using chemiluminescence.

Requested From:

Japan

Laboratory Reagent For In Vitro Research Use Only

Not for resale without prior written consent from LifeSpan BioSciences, Inc.

Created on 9/23/2014

© 2014 LifeSpan BioSciences