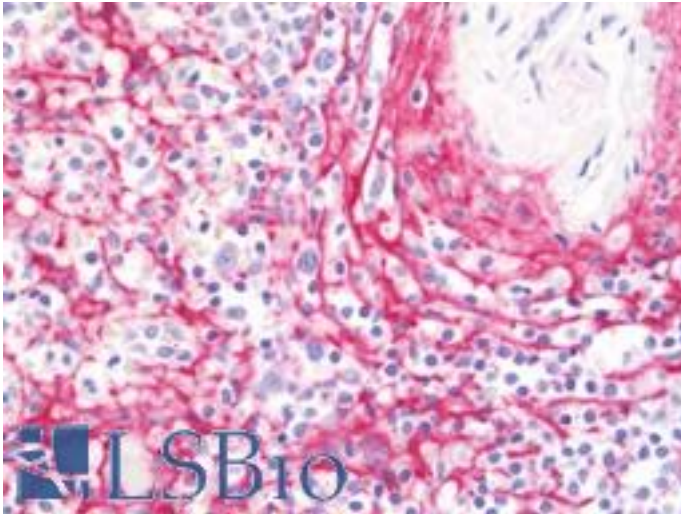


COL6A2 / Collagen VI Mouse anti-Human Monoclonal (2C5-F2) Antibody - LS-B11119 - LSBio

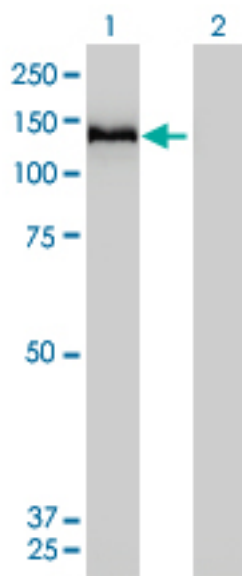
CatalogID:	LS-B11119
Validation:	This antibody replaces catalog number LS-C196946. It has been validated for use in the following assays: IHC-P.
Target:	collagen, type VI, alpha 2 (COL6A2)
Synonyms:	COL6A2 Antibody, Collagen alpha-2(VI) chain Antibody, Collagen, type VI, alpha 2 Antibody, Collagen alpha 2(vi) Antibody, PP3610 Antibody
Family / Subfamily:	Collagen / not assigned-Collagen
Host	COL6A2 antibody was produced in Mouse
Clonality:	Monoclonal
Isotype:	IgG2a,k
Clone Name:	2C5-F2
Immunogen Species:	COL6A2 / Collagen VI antibody was raised against Human
Antigen Type:	GST fusion protein
Immunogen:	COL6A2 / Collagen VI antibody was raised against cOL6A2 (AAH02484, aa1-425 full-length recombinant protein with GST tag. MW of the GST tag alone is 26 KDa.
Specificity:	Human COL6A2 / Collagen VI
Reactivity:	Human
Purification:	Protein A purified
Presentation:	PBS, pH 7.4.
Recommended Storage:	Store at -20°C or lower. Aliquot to avoid repeated freezing and thawing.
Usage Summary:	Sandwich ELISA: Recombinant protein. Western Blot: Transfected lysate, Recombinant protein. Immunohistochemistry: Paraffin.
Uses:	IHC - Paraffin (10 µg/ml), Western blot, ELISA (Optimal dilution to be determined by the researcher)
Size:	50 µg
Concentration:	1 mg/ml

Immunohistochemistry Image:



Human Spleen: Formalin-Fixed, Paraffin-Embedded (FFPE)

Western Blot Image:



Western Blot analysis of COL6A2 expression in transfected 293T cell line by COL6A2 monoclonal antibody (M01), clone 2C5-F2. Lane 1: COL6A2 transfected lysate (109 kDa). Lane 2: Non-transfected lysate.

Requested From:

Japan

Laboratory Reagent For In Vitro Research Use Only

Not for resale without prior written consent from LifeSpan BioSciences, Inc.

Created on 9/23/2014

© 2014 LifeSpan BioSciences