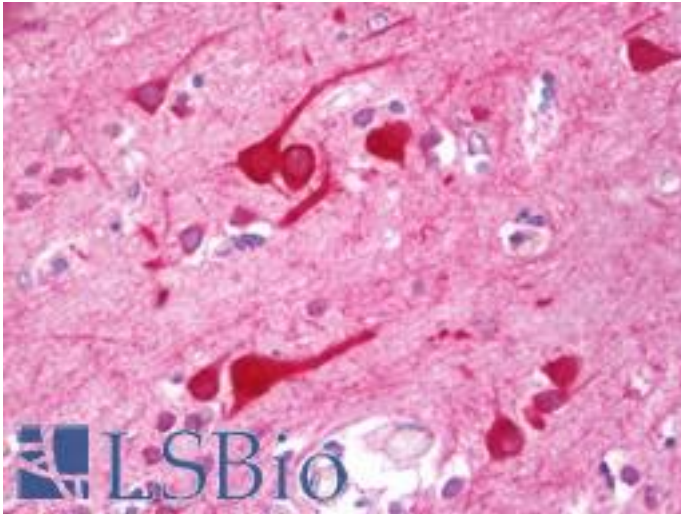


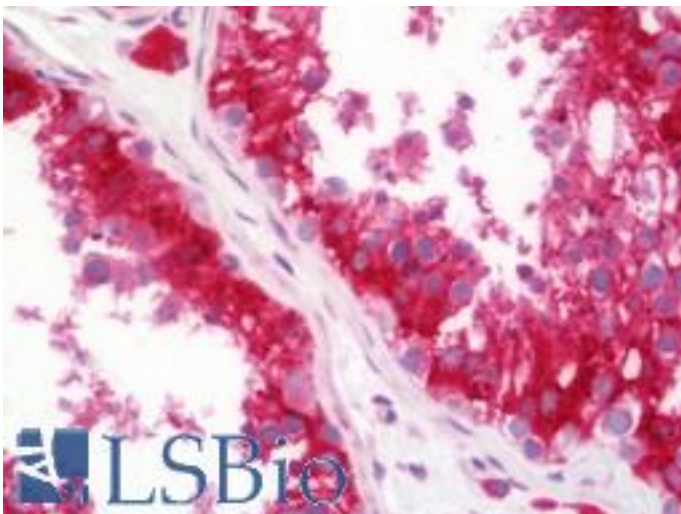
PRAF2 Rabbit anti-Human Polyclonal (aa141-190) Antibody - LS-B11118 - LSBio	
CatalogID:	LS-B11118
Validation:	This antibody replaces catalog number LS-C176086. It has been validated for use in the following assays: IHC-P.
Target:	PRA1 domain family, member 2 (PRAF2)
Synonyms:	PRAF2 Antibody, JM4 Antibody, Jena-Muenchen 4 Antibody, PRA1 domain family, member 2 Antibody, PRA1 family protein 2 Antibody, PRA1 domain family 2 Antibody
Host	PRAF2 antibody was produced in Rabbit
Clonality:	Polyclonal
Immunogen Species:	PRAF2 antibody was raised against Human
Antigen Type:	Synthetic peptide
Immunogen:	PRAF2 antibody was raised against synthetic peptide around Leu166 of human JM4 / PRAF2
Specificity:	Human JM4 / PRAF2
Epitope:	aa141-190
Reactivity:	Human, Mouse, Rat
Purification:	Immunoaffinity purified
Presentation:	PBS, pH 7.2, 0.05% sodium azide
Recommended Storage:	Store at 4°C short term. Aliquot and store at -20°C long term. Avoid freeze-thaw cycles.
Uses:	IHC - Paraffin (5 µg/ml), Immunofluorescence (1:50 - 1:200), Western blot (1:500 - 1:1000) (Optimal dilution to be determined by the researcher)
Size:	50 µl
Concentration:	1 mg/ml

Immunohistochemistry Image:



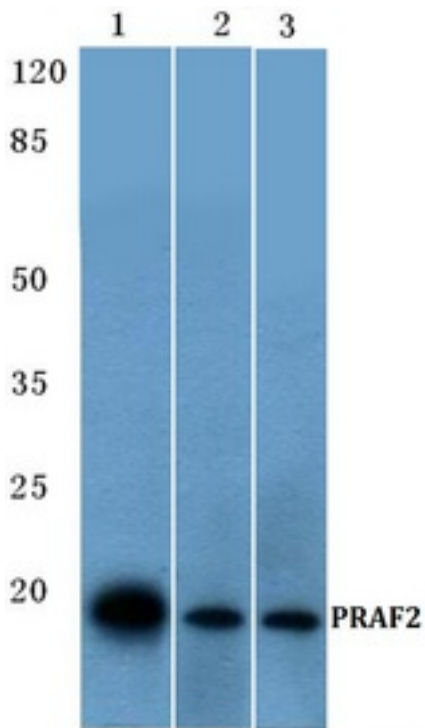
Human Brain, Cortex: Formalin-Fixed, Paraffin-Embedded (FFPE)

Immunohistochemistry Image:



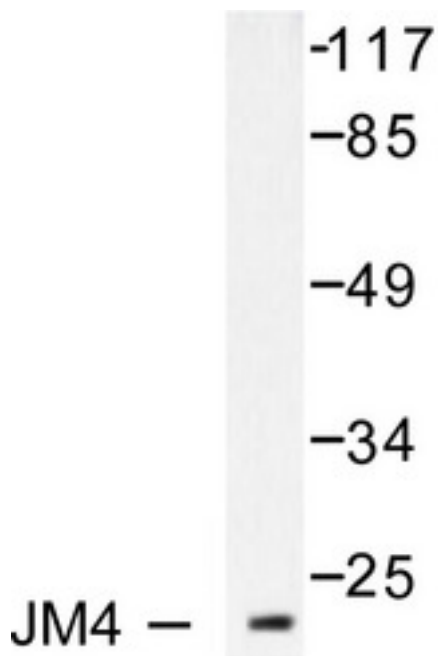
Human Testis: Formalin-Fixed, Paraffin-Embedded (FFPE)

Western Blot Image:



Western blot analysis of JM4/PRAF2 pAb at 1:500 dilution. Lane 1: HEK293T cell lysate. Lane 2: Rat brain tissue lysate. Lane 3: Mouse brain tissue lysate.

Western Blot Image:



Western blot of JM4/PRAF2 (L166) pAb in extracts from LOVO cells.

Requested From:

Japan

Laboratory Reagent For In Vitro Research Use Only

Not for resale without prior written consent from LifeSpan BioSciences, Inc.

Created on 9/23/2014

© 2014 LifeSpan BioSciences