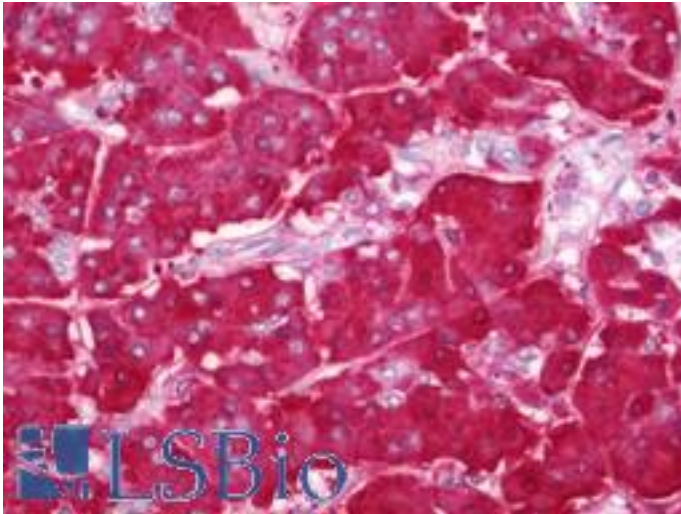


AMY2A / Pancreatic Amylase Rabbit anti-Human Polyclonal (aa484-511) Antibody - LS-B11116 - LSBio

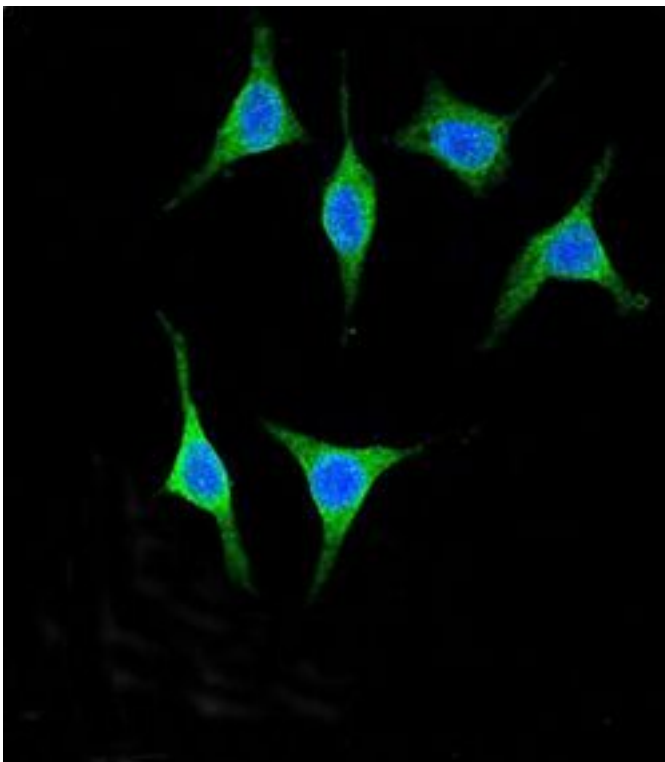
<b>CatalogID:</b>	LS-B11116
<b>Validation:</b>	This antibody replaces catalog number LS-C156319. It has been validated for use in the following assays: IHC-P.
<b>Target:</b>	amylase, alpha 2A (pancreatic) (AMY2A)
<b>Synonyms:</b>	AMY2A Antibody, Alpha-amylase Antibody, Amylase, alpha 2A (pancreatic) Antibody, Found in the pancreas Antibody, Glycogenase Antibody, Pancreatic alpha-amylase Antibody, Pancreatic Amylase Antibody, Pancreatic amylase 2A Antibody, AMY2 Antibody, Amylase, alpha 2A pancreatic Antibody, Amylase, pancreatic, alpha-2A Antibody, Pancreatic amylase alpha 2A Antibody, Pa Antibody
<b>Host</b>	AMY2A antibody was produced in Rabbit
<b>Clonality:</b>	Polyclonal
<b>Immunogen Species:</b>	AMY2A / Pancreatic Amylase antibody was raised against Human
<b>Antigen Type:</b>	Synthetic peptide
<b>Immunogen:</b>	AMY2A / Pancreatic Amylase antibody was raised against kLH-conjugated synthetic peptide from C-terminal region of human AMY2A.
<b>Specificity:</b>	Human AMY2A / Pancreatic Amylase
<b>Epitope:</b>	aa484-511
<b>Reactivity:</b>	Human, Mouse
<b>Purification:</b>	Immunoaffinity purified
<b>Presentation:</b>	PBS, 0.09% sodium azide
<b>Recommended Storage:</b>	Maintain refrigerated at 2-8°C for up to 6 months. For long term storage store at -20°C.
<b>Uses:</b>	IHC - Paraffin (1:250), Immunofluorescence (1:10 - 1:50), Western blot (1:1000) (Optimal dilution to be determined by the researcher)
<b>Size:</b>	200 µl

**Immunohistochemistry Image:**



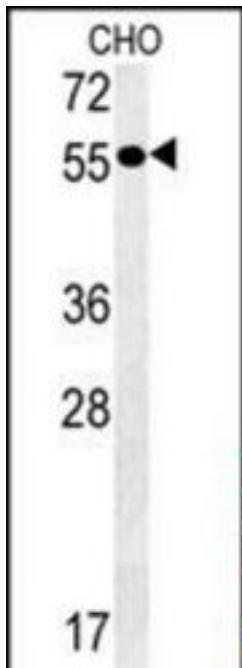
Human Pancreas: Formalin-Fixed, Paraffin-Embedded (FFPE)

**Immunofluorescence Image:**



Confocal immunofluorescence of AMY2A Antibody (C-term) with 293 cell followed by Alexa Fluor 488-conjugated goat anti-rabbit IgG (green). DAPI was used to stain the cell nuclear (blue).

**Western Blot Image:**



AMY2A Antibody (C-term)Western blot of CHO cell line lysates (35 ug/lane). This demonstrates the AMY2A antibody detected the AMY2A protein (arrow).

**Requested From:**

Japan

Laboratory Reagent For In Vitro Research Use Only

Not for resale without prior written consent from LifeSpan BioSciences, Inc.

Created on 9/23/2014

© 2014 LifeSpan BioSciences