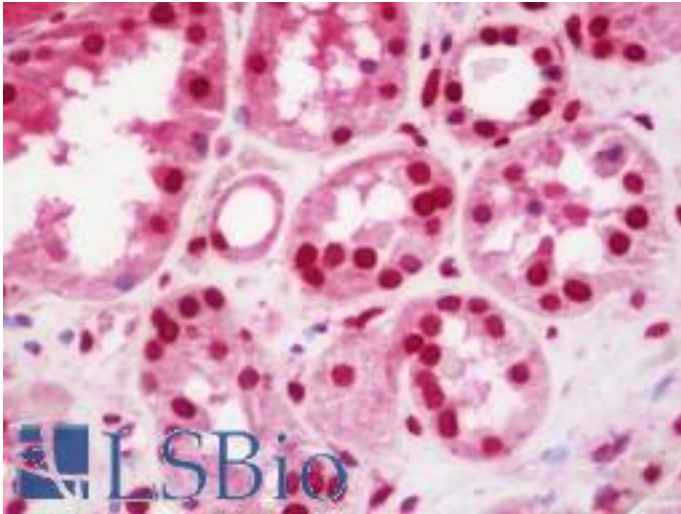


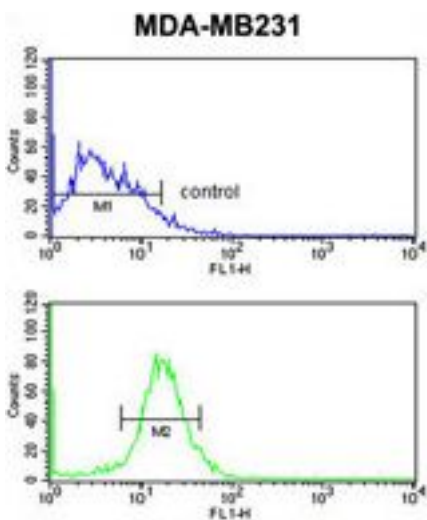
NKX3-1 Rabbit anti-Human Polyclonal (aa118-145) Antibody - LS-B11115 - LSBio	
<b>CatalogID:</b>	LS-B11115
<b>Validation:</b>	This antibody replaces catalog number LS-C164899. It has been validated for use in the following assays: IHC-P.
<b>Target:</b>	NK3 homeobox 1 (NKX3-1)
<b>Synonyms:</b>	NKX3-1 Antibody, BAPX2 Antibody, NK homeobox, family 3, A Antibody, NK3 homeobox 1 Antibody, NKX3 Antibody, NKX3.1 Antibody, Homeobox protein Nkx-3.1 Antibody, NKX3A Antibody
<b>Host</b>	NKX3-1 antibody was produced in Rabbit
<b>Clonality:</b>	Polyclonal
<b>Immunogen Species:</b>	NKX3-1 antibody was raised against Human
<b>Antigen Type:</b>	Synthetic peptide
<b>Immunogen:</b>	NKX3-1 antibody was raised against kLH-conjugated synthetic peptide from internal region of human NKX3-1.
<b>Specificity:</b>	Human NKX3-1
<b>Epitope:</b>	aa118-145
<b>Reactivity:</b>	Human
<b>Purification:</b>	Immunoaffinity purified
<b>Presentation:</b>	PBS, 0.09% sodium azide
<b>Recommended Storage:</b>	Maintain refrigerated at 2-8°C for up to 6 months. For long term storage store at -20°C.
<b>Uses:</b>	IHC - Paraffin (1:100), Western blot (1:1000), Flow Cytometry (1:10 - 1:50) (Optimal dilution to be determined by the researcher)
<b>Size:</b>	200 µl

### Immunohistochemistry Image:



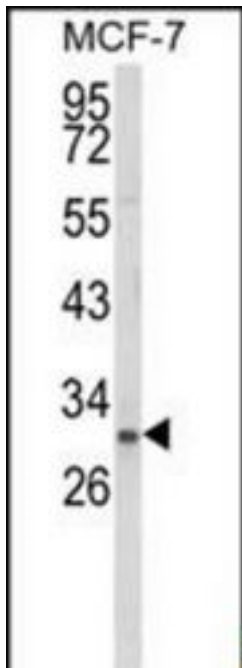
Human Kidney: Formalin-Fixed, Paraffin-Embedded (FFPE)

### Flow Cytometry Image:



NKX3-1 Antibody (Center) flow cytometry analysis of MDA-MB231 cells (bottom histogram) compared to a negative control cell (top histogram). FITC-conjugated goat-anti-rabbit secondary antibodies were used for the analysis.

**Western Blot Image:**



Western blot of NKX3-1 Antibody (Center) in MCF-7 cell line lysates (35 ug/lane). NKX3-1 (arrow) was detected using the purified Pab.

**Requested From:**

Japan

Laboratory Reagent For In Vitro Research Use Only

Not for resale without prior written consent from LifeSpan BioSciences, Inc.

Created on 9/23/2014

© 2014 LifeSpan BioSciences